

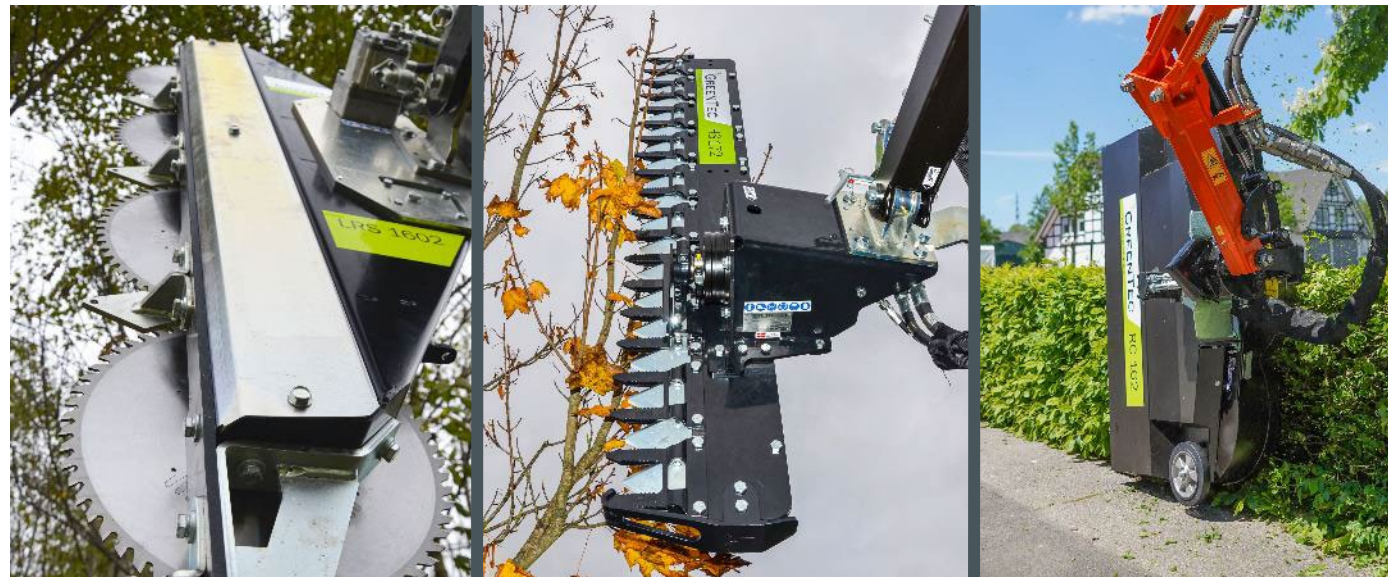
Attachment Tools

PRODUCT PRESENTATION

September 2022 (VER. 1.0)



Argumentation - Quadsaw vs. Cutterbar vs. Rotary Cutter



Machine	Quadsaw	Cutterbar	Rotary Hedge Cutter
Model	LRS 1602	HS 172	RC 162
Capacity	High	Low	Medium
Branch thickness	Large (12 cm)	Small (6 cm)	Small (4 cm)
Driving speed	High	Low	Low
Maintenance	High	Low	High
Price	High	Low	High

Argumentation - Quadsaw vs. Cutterbar vs. Rotary Cutter



Machine	Quadsaw	Cutterbar	Rotary Hedge Cutter
Model	LRS 1602	HS 172	RC 162
Susceptibility to diseases	Low	Medium	Low
Cut-off material must be removed	Yes	Yes	No
Quality	High	Medium	High

Tools suitable for HXF or Scorpion

Compatible with HXF or Scorpion:

- If you buy a GreenTec tool, it is always a 100% compatible with your Multi Carrier HXF or Boom Mower Scorpion



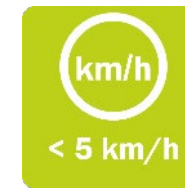
Adaptation to machine



Adaptation to individual machine:

- Adapters for boom mowers and HXFs can be found on our website www.greentec.eu at each product page
- If the right adapter is not available, choose the adapter that can be most easily adapted (local solution that the customer must be responsible for)
- Pay attention to oil volumes and determine if an oil flow divider is needed. It is important that the tools do not get too much oil, as the engine cannot handle it in the long run. View the price list for the cost of an oil flow divider

Quadsaw LRS 1402 - 2402



LRS 1402 - 2402:

- Perfect cutting quality
- Low weight
- Low power requirement
- High driving speed
- Branch guiders between saw blades
- Skid shoe, avoid collision with the ground



Quadsaw LRS 1402 - 2402

MODELS	LRS 1402	LRS 1602	LRS 2002	LRS 2402	LRS 2 x 2002	LRS 2 x 2402
Working width (m)	1.4	1.6	2.0	2.4	4.0	4.8
Weight (kg)	48	110	198	239	510	600
Max. branch thickness (cm)	Ø10	Ø12	Ø16	Ø21	Ø16	Ø21
Driving speed up to	5 km/h	5 km/h	5 km/h	5 km/h	5 km/h	5 km/h
Number of blades	4	4	4	4	8	8
Blade diameter (cm)	Ø35	Ø40	Ø49.5	Ø60	Ø49.5	Ø60
Blade speed (rpm)		2600-2700	3000-3200	3200	3000-3200	3200
Min. oil flow (l/min / oil pressure)	25/190	40/190	50/180	50/180	2x50/180	2x50/180
Alt. oil flow (l/min / oil pressure)			85/150	85/150	100/180	100/180
Required hydraulic connections	1 x double acting + 1 x drain				2 x double acting + 1 x drain or 1 x double acting + 1 x drain	

Quadsaw LRS 1402 - 2402



BRACKETS



EQUIPMENT

View more on:

www.GreenTec.eu

MODELS	LRS 1402	LRS 1602	LRS 2002	LRS 2402	LRS 2 x 2002	LRS 2 x 2402
HXF 2302	X	-	-	-	-	-
HXF 2802	X	X	-	-	-	-
HXF 3302	-	X	X	X	-	-
SCORPION 4-series	X	X	-	-	-	-
SCORPION 6-series	-	-	X	X	-	-
SCORPION 8-series	-	-	X	X	-	-

Quadsaw LRS 1402 - 2402

Saw blades:

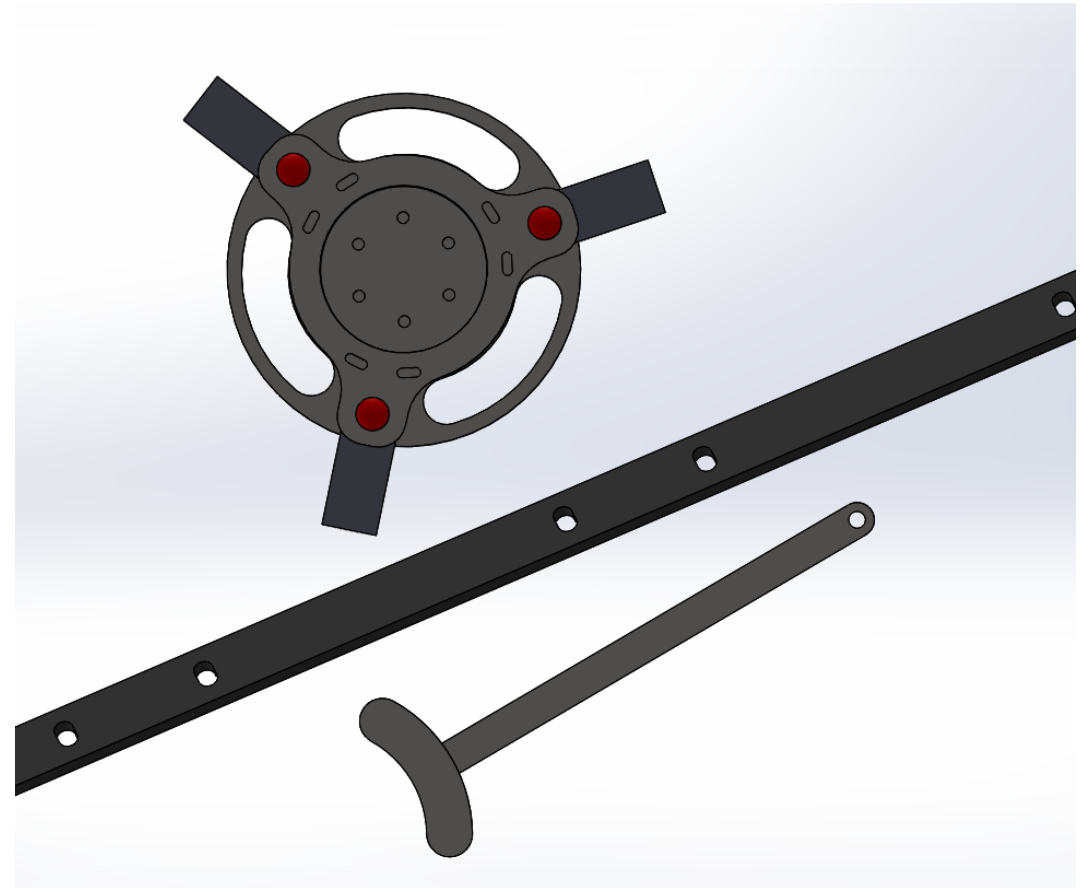
- Carbide tipped teeth
- Ensure long life
- 100 hours durability before sharpening is required. Gain another 100 hours durability after sharpening
- Change the positions of the blades regularly. The bottom blade is subjected to a harder load and is worn before the other blades
- Sharpening must be performed by a professional with the needed equipment



Quadsaw LRS 1602 - 2402

Blade rotor:

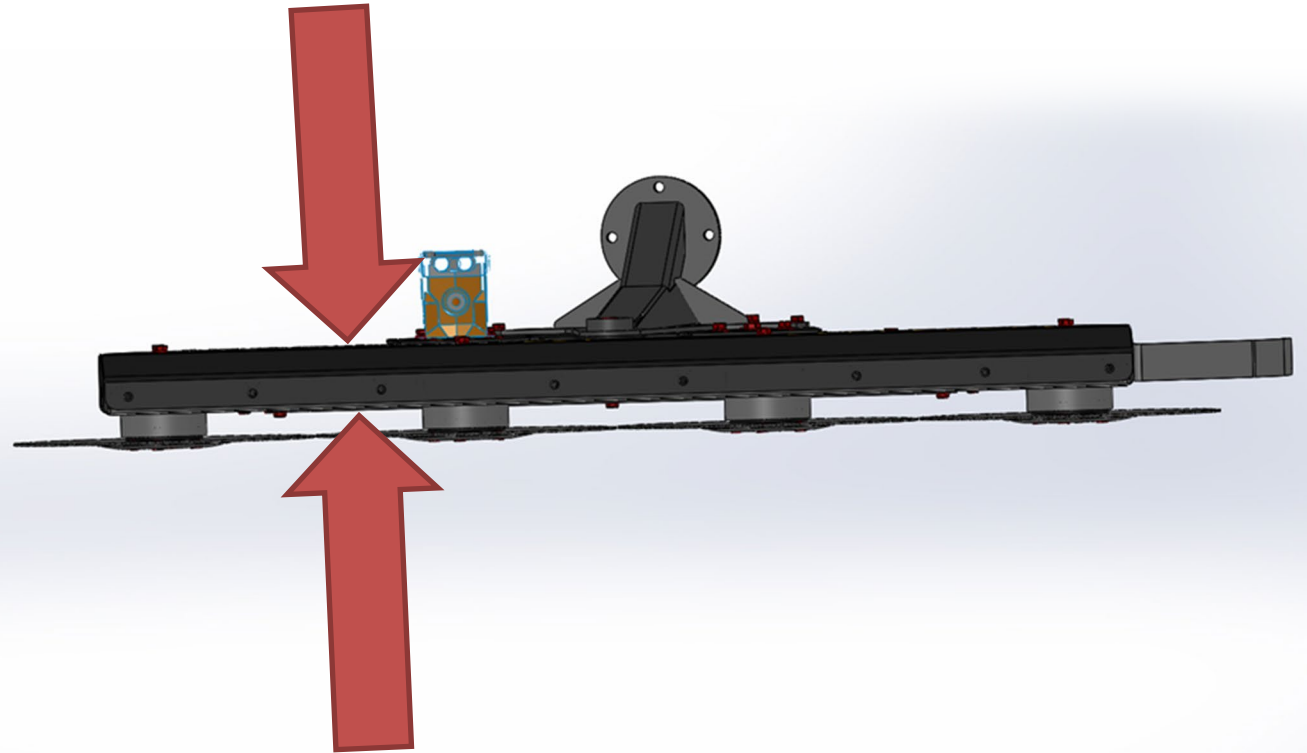
- Makes the LRS saw more versatile with blade rotor
- The blade rotor is used for twigs and small branches, e.g., hedge trimming of branches up to 4 cm
- Saw blades are used for thicker branches
- Easy to move around, 4 or 6 bolts per rotor
- Same blade system as the RC series



Quadsaw LRS 1402 - 2402

Body of the saw:

- Low weight
- Narrow structure of the basic body
- Possibility of remodeling the saw to a right or left handed version by moving components, such as the oil engine



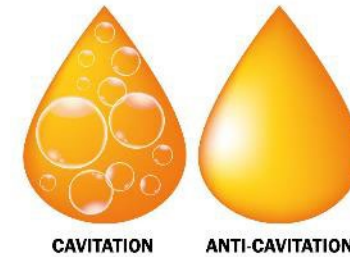
Quadsaw LRS 1402 - 2402

Transport safety:

- Easy to mount and dismount
- Road safety
- Safety when the machine is parked in the building for storage



Quadsaw LRS 1402



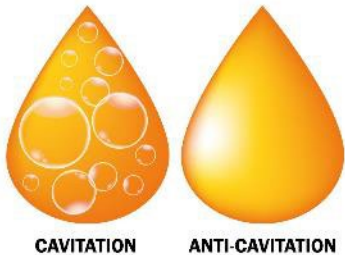
Construction:

- Power Band belt drive
- Many mounting options
- Belt tension gauge for tightening the belts correctly
- Built-in anti-cavitation valve
- Long life

Quadsaw LRS 1602 - 2402

Construction:

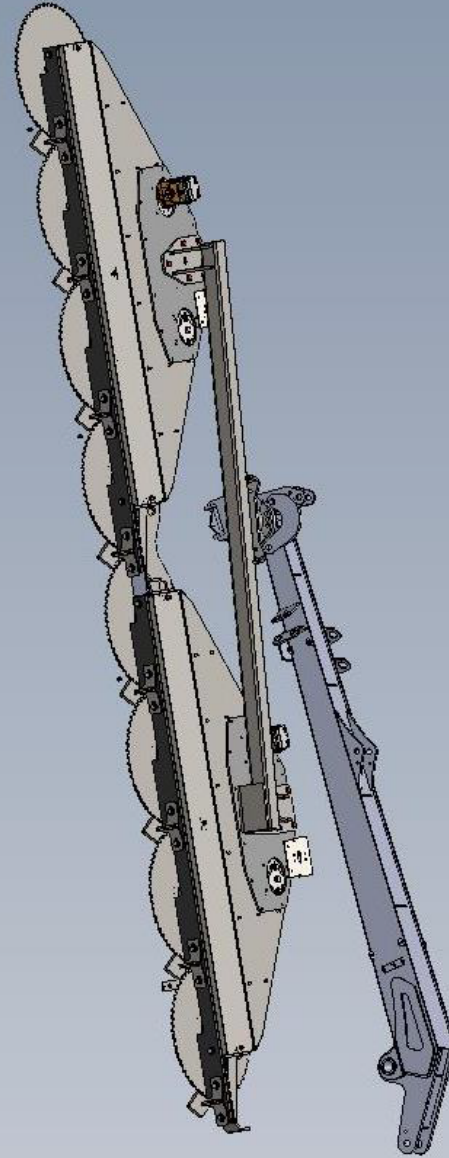
- Power Band belt drive
- Many mounting options
- Belt tension gauge for tightening the belts correctly
- Built-in anti-cavitation valve
- Long life



Twinsaw LRS 2002 & 2402

Construction:

- Twinsaw LRS 2002 is build of two LRS 2002 saws
- Twinsaw LRS 2402 is build of two LRS 2402 saws
- Requires large hydraulic capacity
- It must be mounted on large excavators for stability



Maintenance



Daily maintenance:

- Belt tightness is checked and adjusted. See label on the shield of the machine
- There are no lubrication points on the machine
- Blades can be sharpened once (performed by professionals)
- Check the machine for faults, defects or damages
- Check for leaks from oil hoses or engines



Rotary Hedge Cutter RC 102 - 162



RC 102 - 162:

- Perfect cutting quality
- Reduction of diseases in the hedge
- No disposal of the cut-off material
- Increased biodiversity
- Minimal wear and maintenance costs
- The enclosed cutter housing improves safety
- Low noise level



Rotary Hedge Cutter RC 102 - 162



MODELS	RC 102	RC 132	RC 162
HXF 2302	X	-	-
HXF 2802	X	X	-
HXF 3302	-	X	X
SCORPION 4-series	X	X	-
SCORPION 6-series	-	-	X
SCORPION 8-series	-	-	X



BRACKETS



EQUIPMENT

View more on:

www.GreenTec.eu

Rotary Hedge Cutter RC 102 - 162

MODELS	RC 102	RC 132	RC 162
Working width (m)	1.0	1.3	1.6
Weight (kg)	100	150	200
Max. branch thickness (cm)	2	3	4
Number of rotors	3	3	3
Blades per rotor	6	6	6
Driving speed up to	2.5 km/h	2.5 km/h	2.5 km/h
Min. oil flow (l/min / oil pressure)	25/190	40/190	50/180
Required hydraulic connections	1 x double acting + 1 x drain		



Rotary Hedge Cutter RC 102 - 162

Construction:

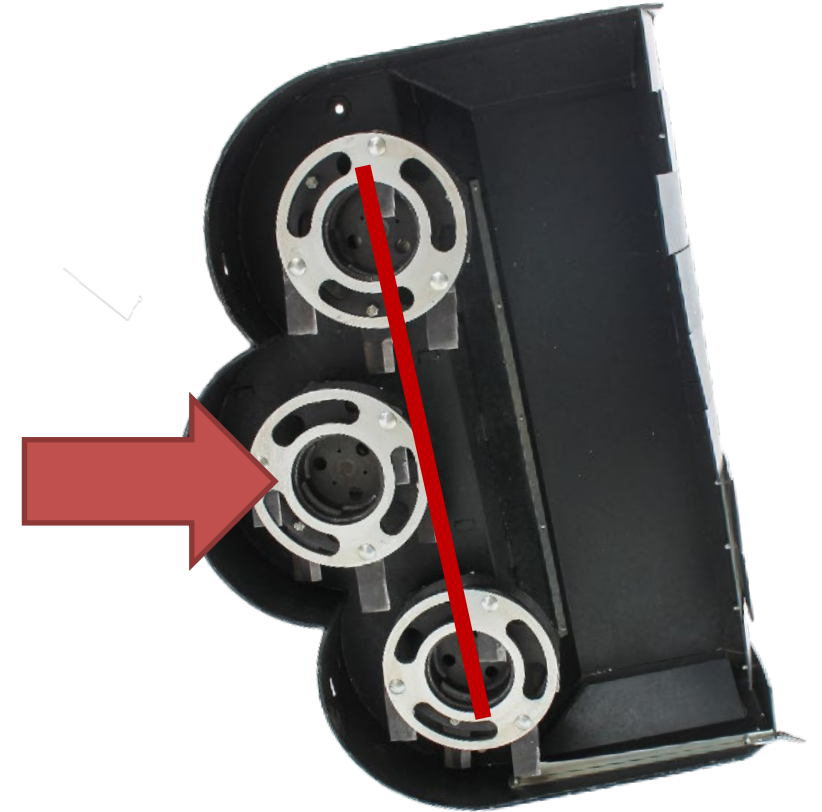
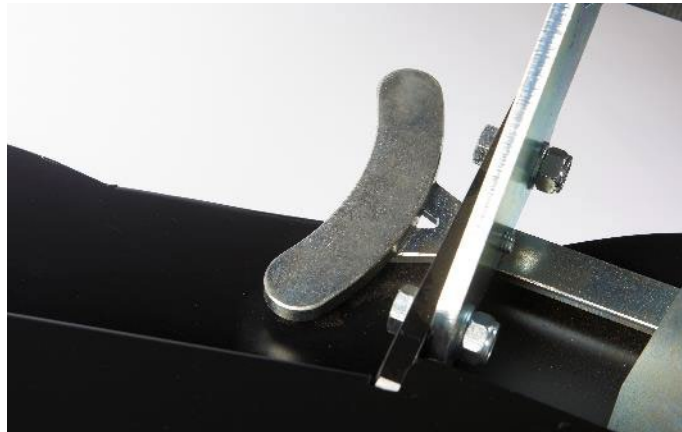
- Double cutting depth ensure shredding of material
- It is possible to adjust the cutting angle
- Power Band belt drive
- 360° free-swinging blades
- Easy to change blades
- Easy access to the belt drive
- Support wheel
- Rubber flap kit



Rotary Hedge Cutter RC 102 - 162

Blade system:

- Center blade retracted for freely swinging knives
- Nice straight cut due to retracted center blade
- Special tool for locking the blades for efficient and safe change of blades

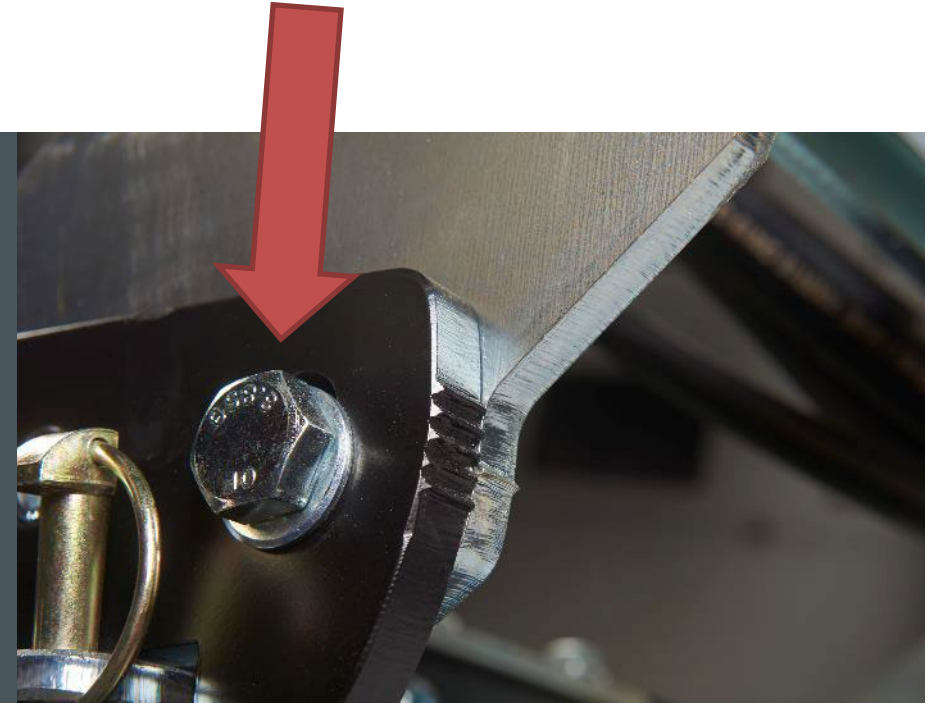


Rotary Hedge Cutter RC 102 - 162



Cutting shield:

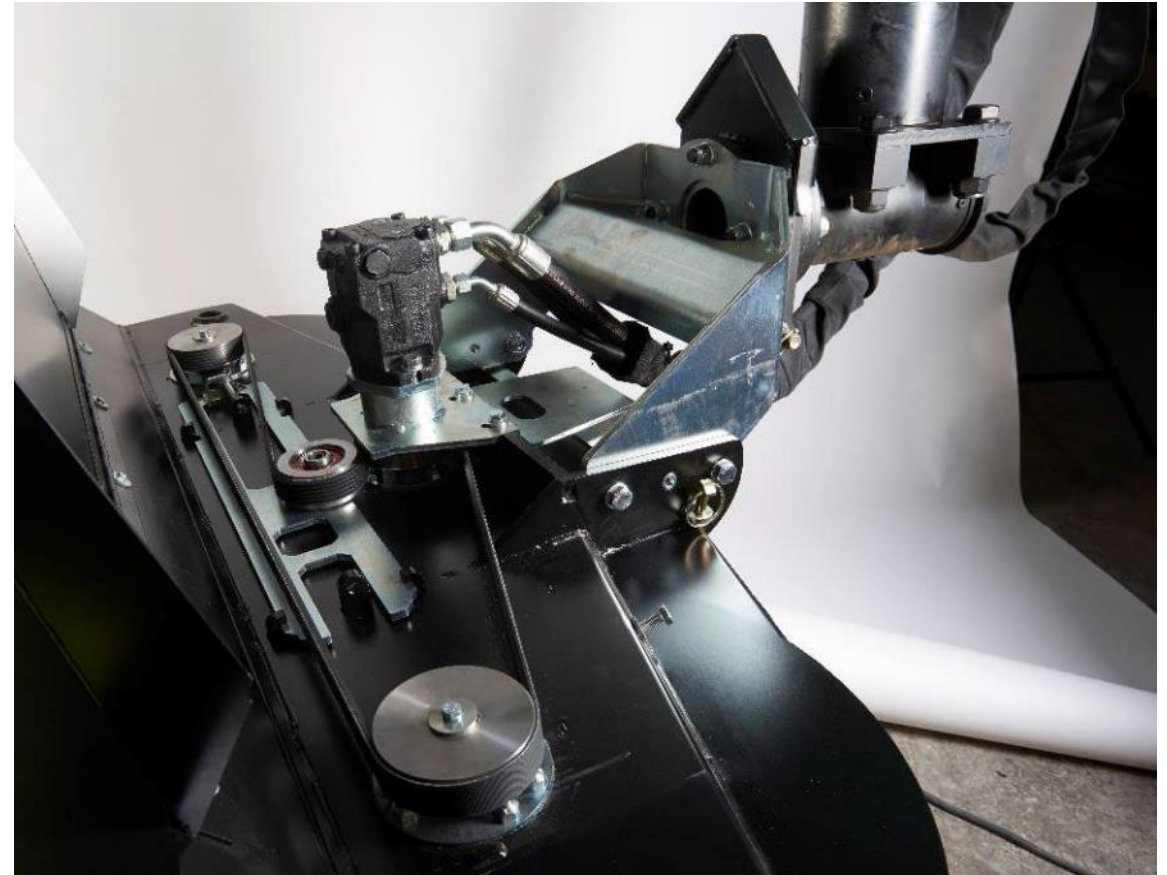
- Branch guider to ensure even insertion of branches
- Possibility of stepless adjustment of cutting angle



Rotary Hedge Cutter RC 102 - 162

Belt drive:

- Power Band belt drive
- Hidden behind shield. Easy to open
- Easy access with plenty of space
- Belt tension gauge included for correct adjustment of tightness on belt
- Large contact surface for belt on pulley results in maximal torque transfer to pulley
- Only one oil engine



Maintenance



Daily maintenance:

- Belt tightness is checked and adjusted. See label on the shield of the machine
- There are no lubrication points on the machine
- Blades are turned to the other side or changed completely
- Check the machine for faults, defects or damages
- Check for leaks from oil hoses or engines



Cutterbar HL 152 – 242



HL 152 - 242:

- Fast Frequency Cut System, between 200 and 400 cuts per minute
- Perfect cutting quality
- Fingers with ball ends prevent branches from getting stuck



Cutterbar HL 152 – 242



MODELS	HL 152	HL 182	HL 212	HL 242
HXF 2302	X		-	-
HXF 2802	X	X	X	-
HXF 3302	-	X	X	-
SCORPION 4-series	X	X	X	X
SCORPION 6-series	-	-	-	-
SCORPION 8-series	-	-	-	-



BRACKETS



EQUIPMENT

View more on:

www.GreenTec.eu

Cutterbar HL 152 – 242

MODELS	HL 152	HL 182	HL 212	HL 242
Working width (m)	1.5	1.8	2.1	2.4
Weight (kg)	60	64	68	72
Max. branch thickness (cm)	4	4	4	4
Driving speed up to	2 km/h	2 km/h	2 km/h	2 km/h
Min. oil flow (l/min / oil pressure)	20/190	25/190	25/190	25/190
Alt. oil flow (l/min / oil pressure)	32/190	40/190	40/190	40/190
Required hydraulic connections	1 x double acting			



Cutterbar HL 152 – 242

Fingers and blades:

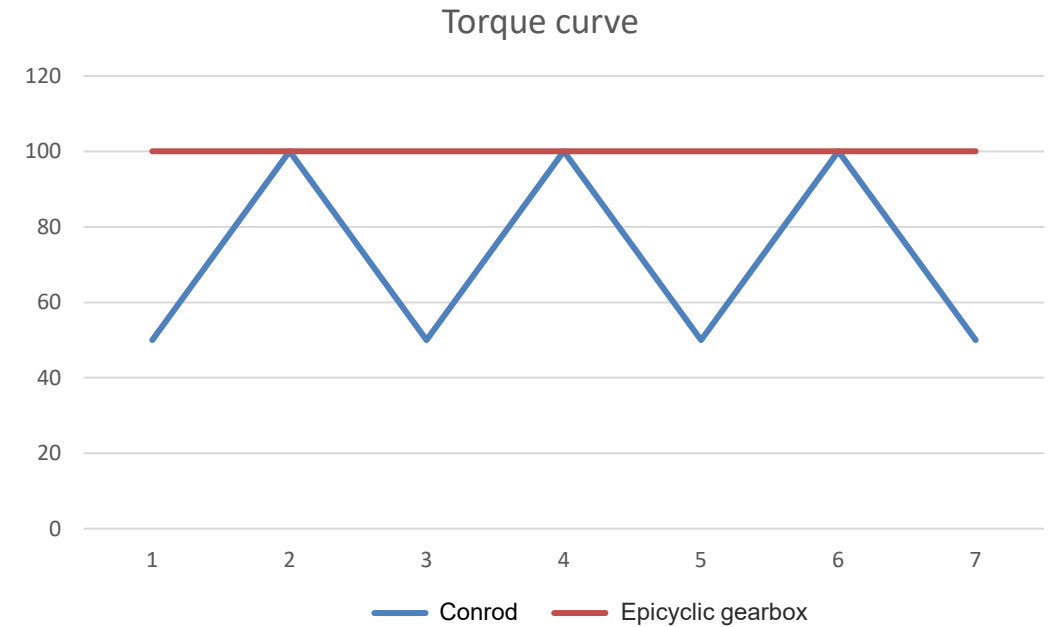
- Fingers with ball ends prevent branches from getting stuck
- Easy and quick to change blades



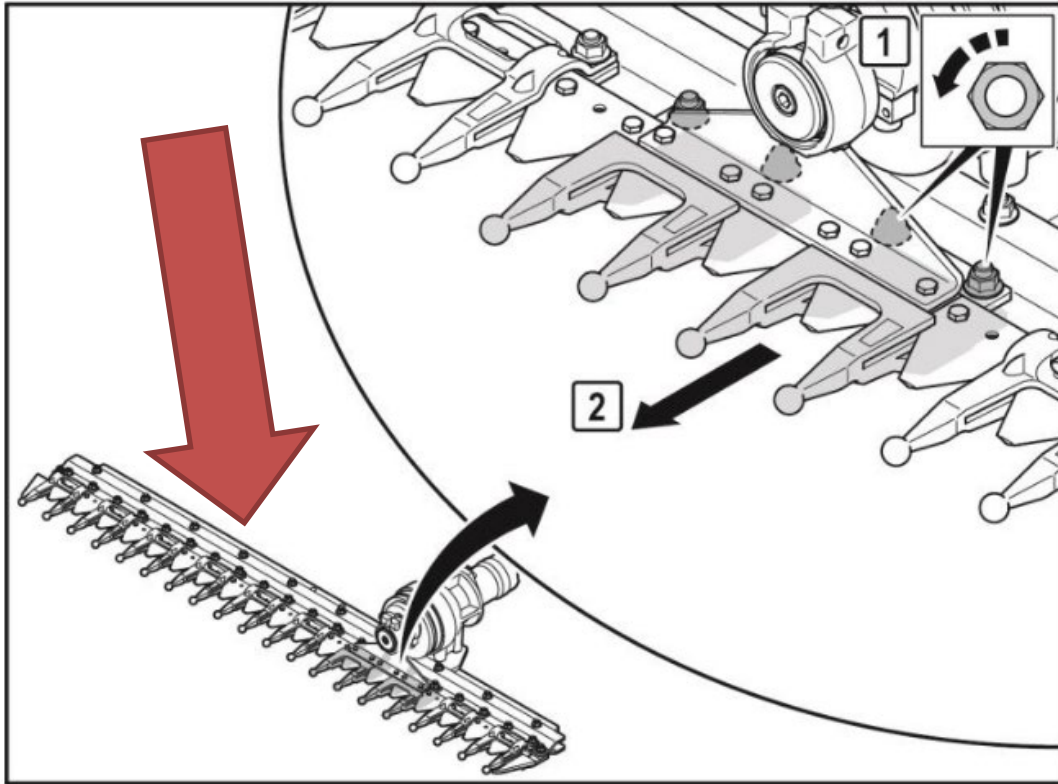
Cutterbar HL 152 – 242

Direct drive:

- With direct drive, high torque is ensured, constantly
- The connecting rod will have a lower torque in the outer points



Cutterbar HL 152 – 242



Moving the drive function:

- It is possible to move the drive on the cutter bar
- Advantageous to use center mount when cutting behind an electric fence
- Advantageous with drive in the bottom to reach as high as possible

Cutterbar HS 172 – 242



HS 172 - 242:

- Perfect cutting quality of branches and twigs
- Special finger bars for gentle cutting
- Double-sharpened blades ensure low power requirement



Cutterbar HS 172 – 242



MODELS	HS 172	HS 212	HS 242
HXF 2302	-	-	-
HXF 2802	X	-	-
HXF 3302	X	X	X
SCORPION 4-series	X	-	-
SCORPION 6-series	-	X	X
SCORPION 8-series	-	X	X



BRACKETS



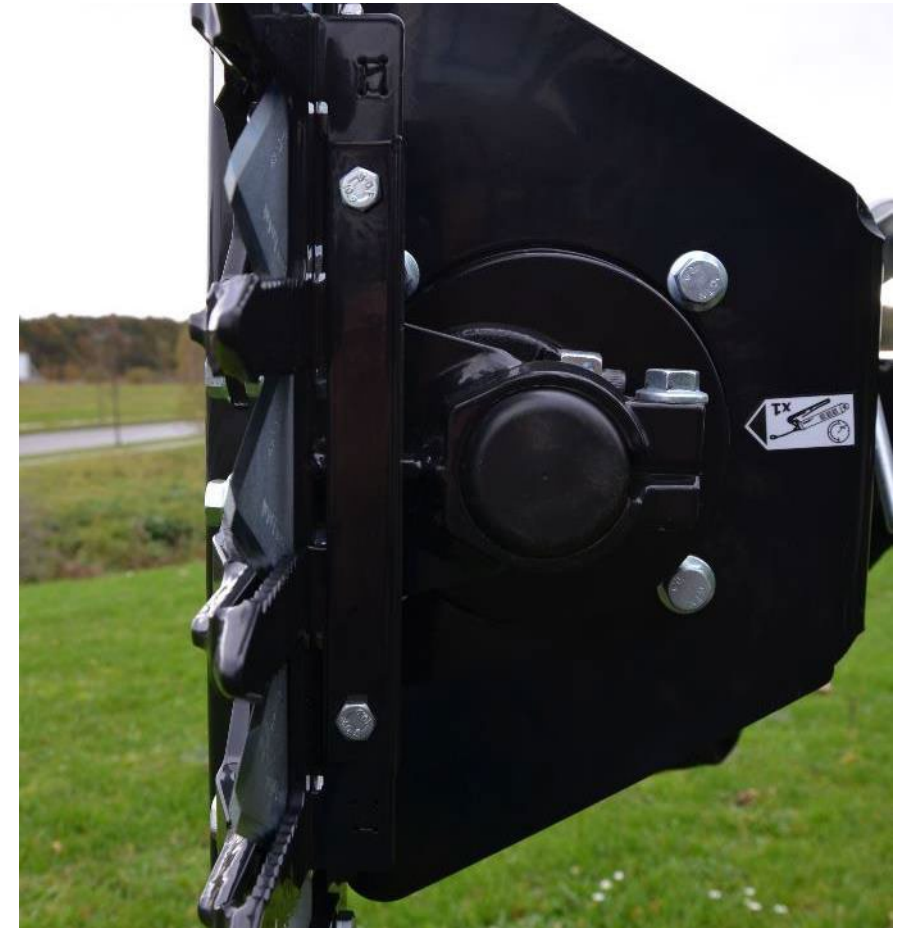
EQUIPMENT

View more on:

www.GreenTec.eu

Cutterbar HS 172 – 242

MODELS	HS 172	HS 212	HS 242
Working width (m)	1.7	2.1	2.4
Weight (kg)	120	130	145
Max. branch thickness (cm)	Ø6	Ø6	Ø6
Driving speed up to	5 km/h	5 km/h	5 km/h
Min. oil flow (l/min / oil pressure)	40/190	50/190	50/190
Required hydraulic connections	1 x double acting		



Cutterbar HS 172 – 242

Fingers and blades:

- On one side, the fingers have teeth that keep the branches in the cutting area. On the other side, the fingers are smooth which avoid unnecessary damage to the branches.
- Double-sharpened blades ensure low power requirement
- Easy to change both fingers and blades



Cutterbar HS 172 – 242

Construction:

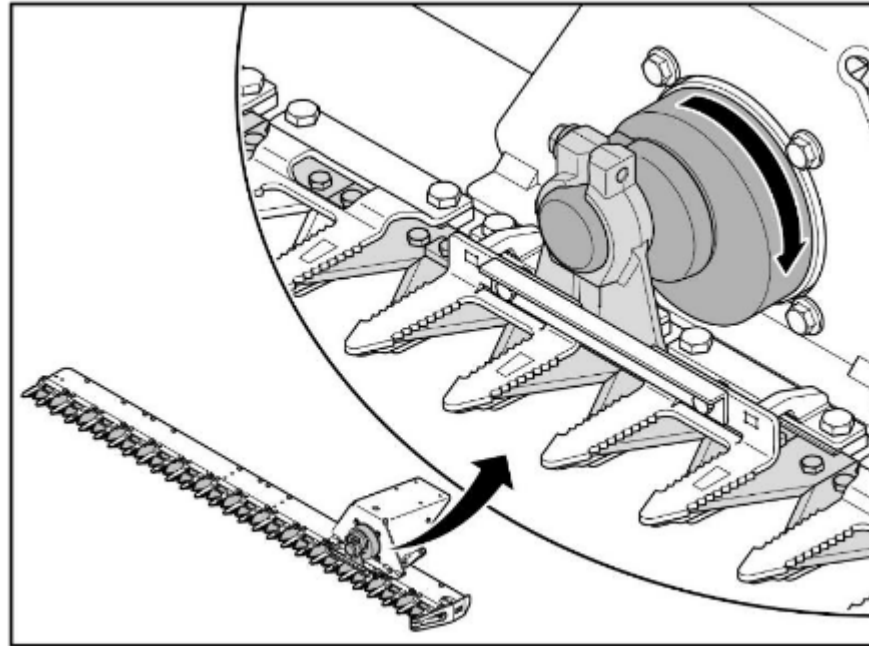
- Plastic guiding of the cutter bar
- Easy to change components, e.g., fingers or blades
- Low maintenance
- Long life on the cutter bar



Cutterbar HS 172 – 242

Moving the drive function:

- It is possible to move the drive on the cutter bar
- Advantageous to use center mount when cutting behind an electric fence
- Advantageous with drive in the bottom to reach as high as possible



Cutterbar HS 172 – 242

Skid shoe:

- Skid shoe prevents the machine from hitting the ground
- Easy to detach

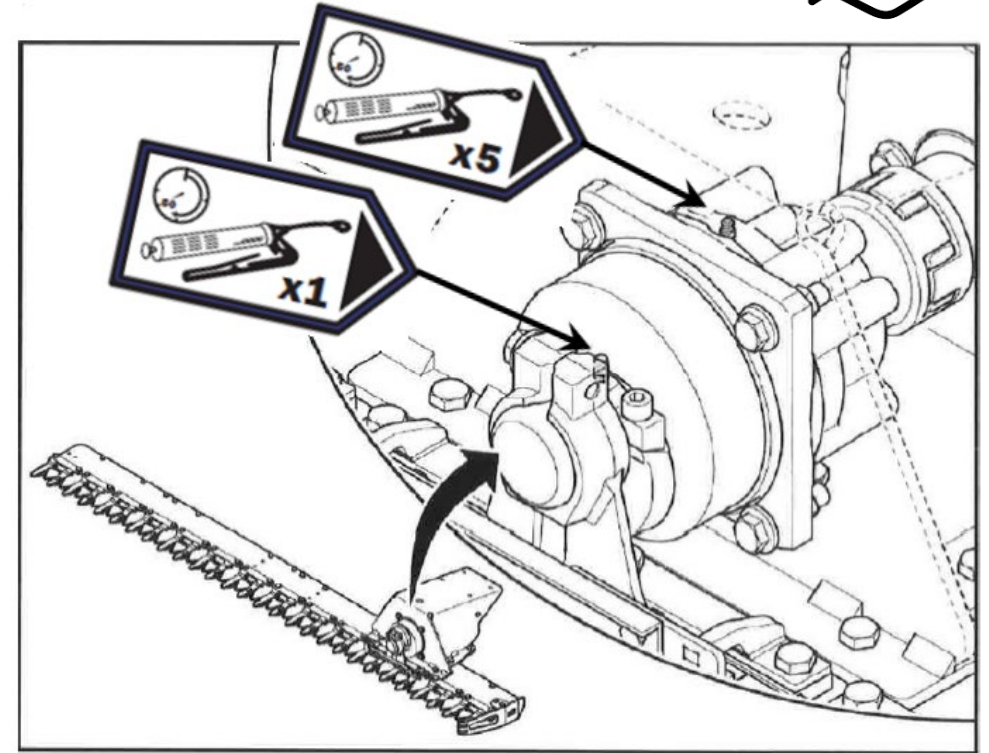


Maintenance



Daily maintenance:

- Replace defective blades and fingers
- Lubricating points according to instructions
- Check guide rails for wear
- Check the machine for faults, defects or damages
- Check for leaks from oil hoses or engines





GRASS MOWING
EFFORTLESS MAINTENANCE

Barrier Mower RI 60 & 80



RI 60 & 80:

- Good ground following capability
- Two blades perform a uniform cutting result
- Possible to mow close to posts and trees
- Simple construction



Barrier Mower RI 60 & 80

Mounting options:

- HXF
- FOX



Barrier Mower RI 60 & 80

MODELS	RI 60	RI 80
Working width (m)	0.6	0.8
Weight (kg)	45	60
Driving speed up to	3 km/h	3 km/h
Min. oil flow (l/min / oil pressure)	25/190	25/190
Alt. oil flow (l/min / oil pressure)	40/190	40/190
Required hydraulic connections	1 x double acting + 1 x drain	



Barrier Mower RI 60 & 80

Spring release:

- Spring release for deviation, e.g., fence posts or trees
- Easy and stepless adjustment
- Adjust the spring release with a bolt. Adjust the pressure to obstacles



Barrier Mower RI 60 & 80

Anti-scalp protection disc:

- Ensures the cutting height
- Follows the surface of the ground
- Two blades
- Rounding of blades ensure better suction of grass and a nicer cut
- Blade holder with two holes for adjusting the distance to posts



Flail Mower FR 92 & 112



FR 92 & 112:

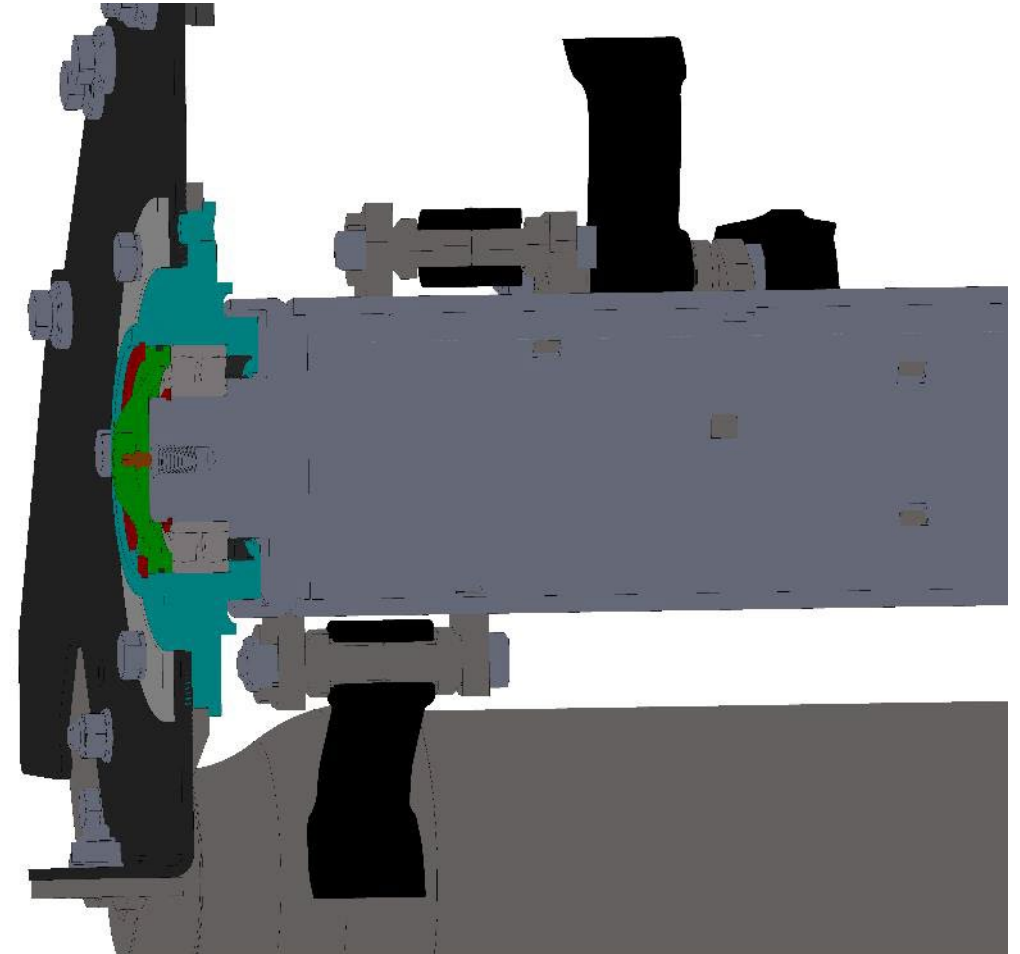
- Integrated Airflow absorbs the grass and reduces the power requirement
- Narrow total width translates to easier maneuvering and getting closer to objects
- Equipped with C-flails
- Adjustable front according to the quantity of the material
- Rubber protection in front and back. Avoid throwing stones



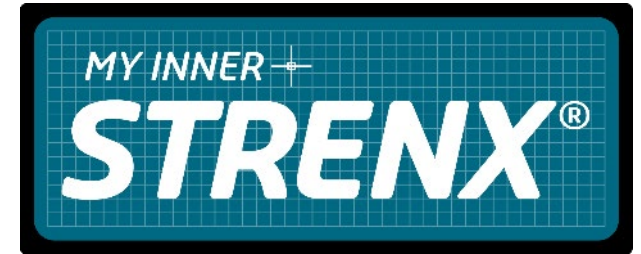
Flail Mower FR 92 & 112

Construction – total width:

- Power Belt drive – no engine exposed on the cutting head
- Narrow build of the cassette for belt drive
- Minimum total width as the rotor bearings are integrated

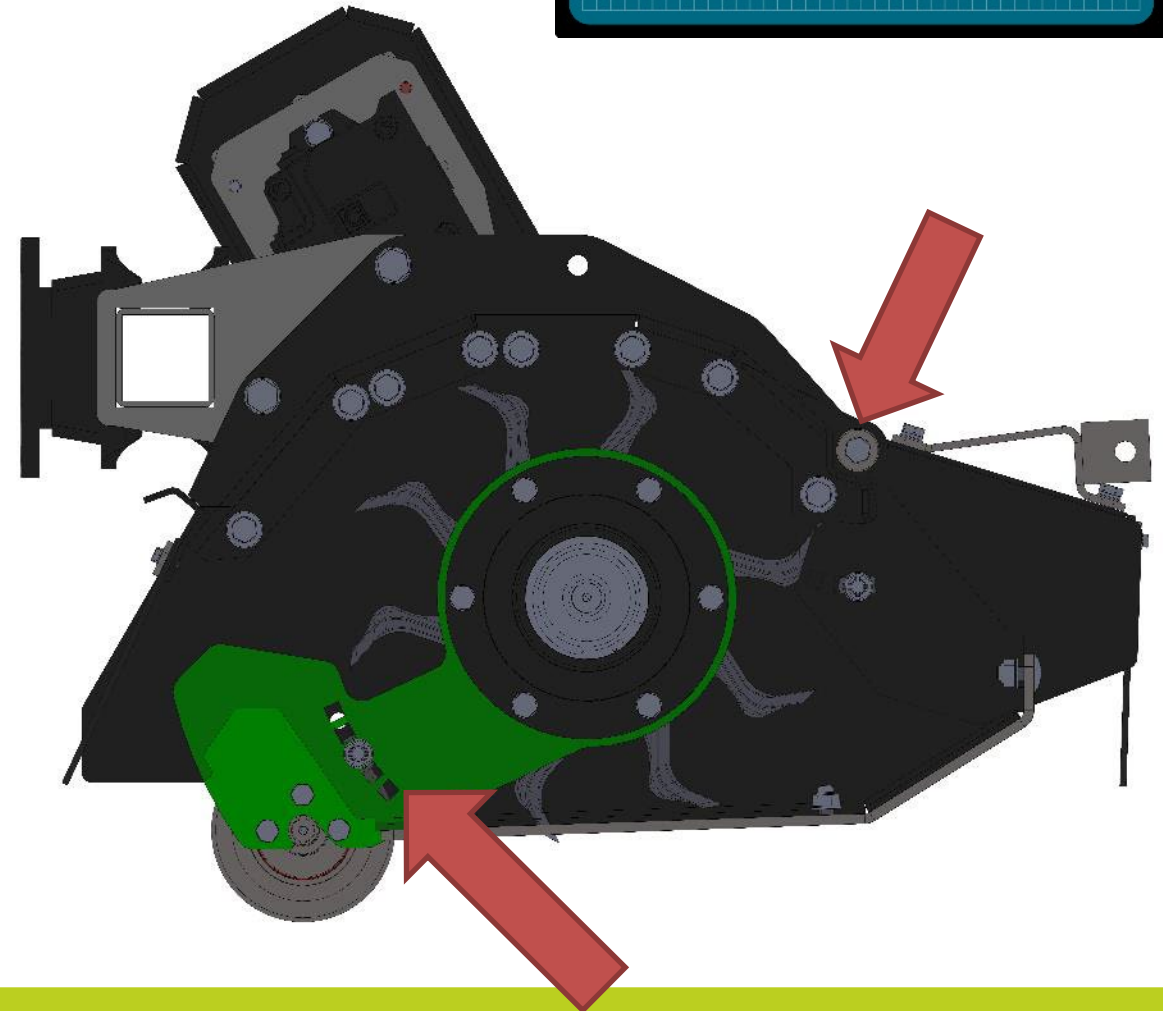


Flail Mower FR 92 & 112



Construction – shield:

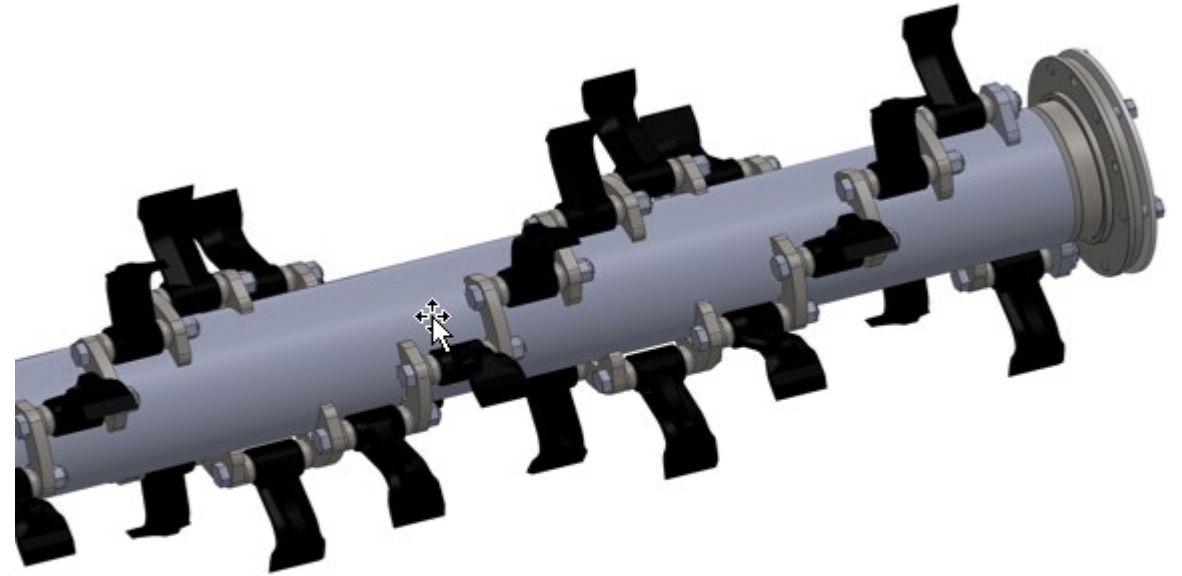
- The rotor is moved forward to improve the airflow. Better suction is achieved and the material is thrown out more efficiently
- Adjustable front for easier insertion of material
- Adjustable roller for setting the cutting height
- Made of Strenx steel
- Shield is bolted together. Two side pieces and a top piece
- Closed sides for minimal stone throwing



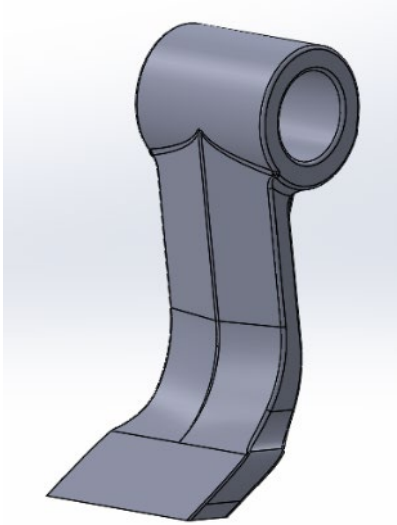
Flail Mower FR 92 & 112

Construction - rotor:

- Rotor bearings integrated in the rotor – small total width
- Double spiral rotor
- Power Band belt for maximum transfer of force
- Lubrication where dirt is pushed out of the bearings

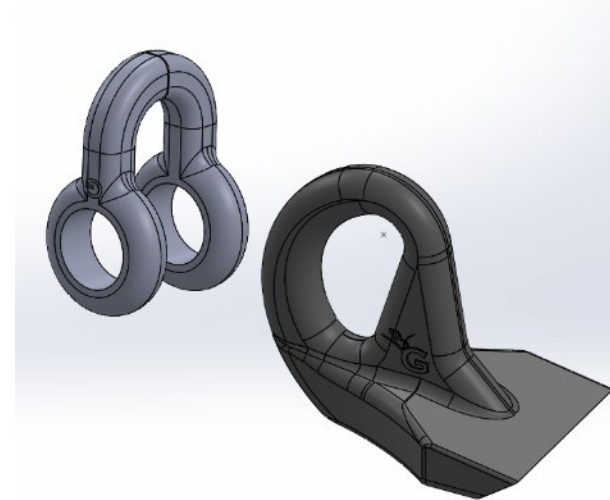


Flail Mower FR 92 & 112



C-flails:

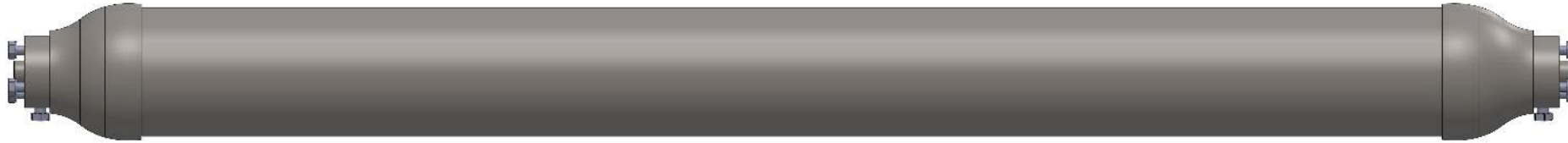
- Large contact surface on the back
- Large width for higher capacity and airflow
- Stay sharp due to the cutting angle



L-flails:

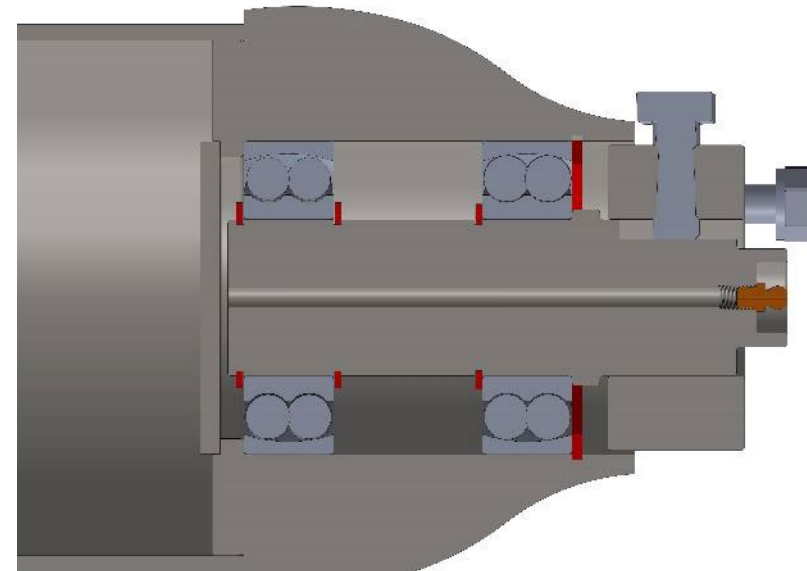
- Uniform cut under pressurized working conditions
- For stony areas. Can also deviate to the side

Flail Mower FR 92 & 112



Construction – rear roller:

- Two pieces of double bearings on each side
- Rounded rear roller
- Lubrication where dirt is pushed out of the bearings



Flail Mower FR 122 & 162

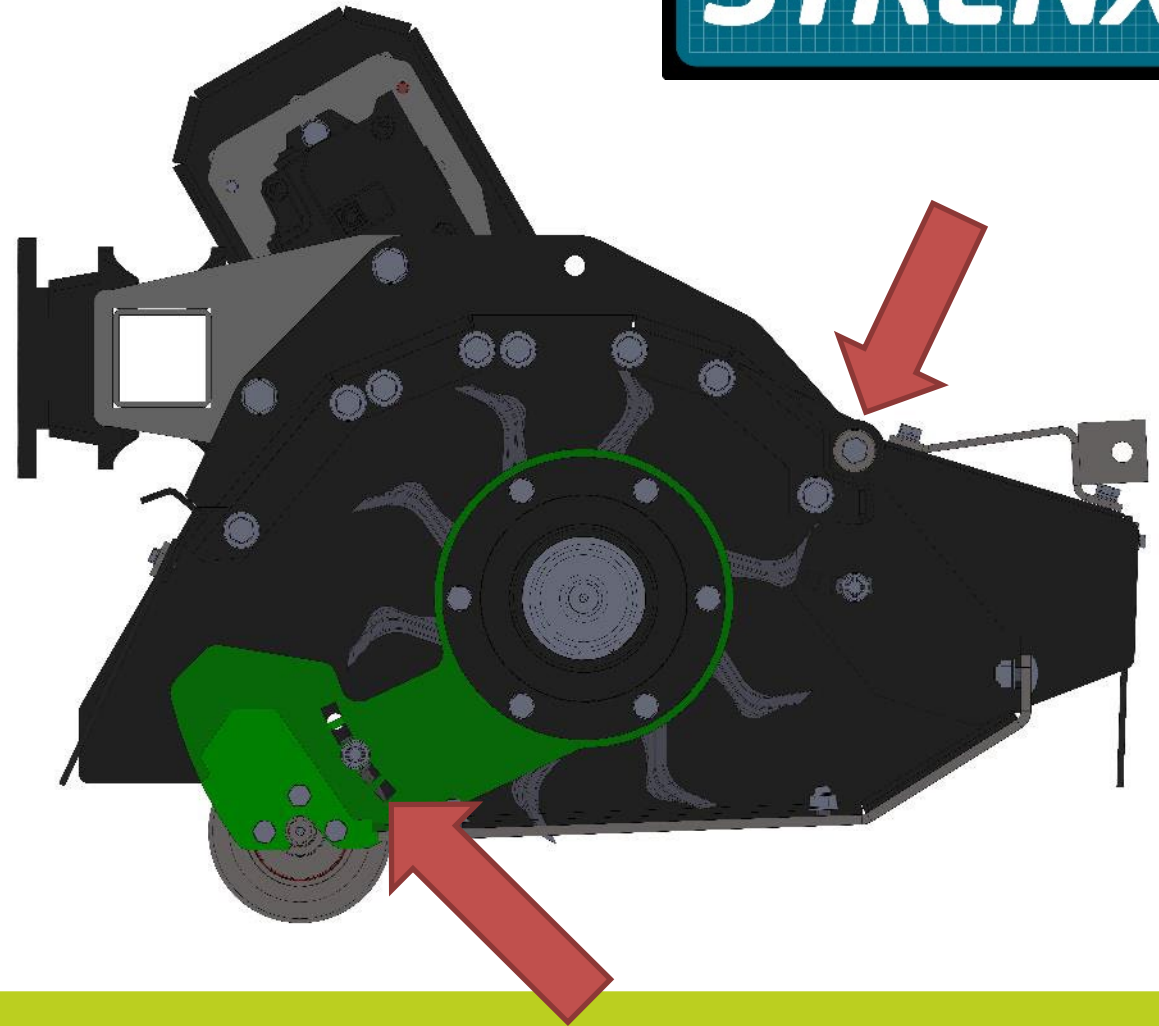
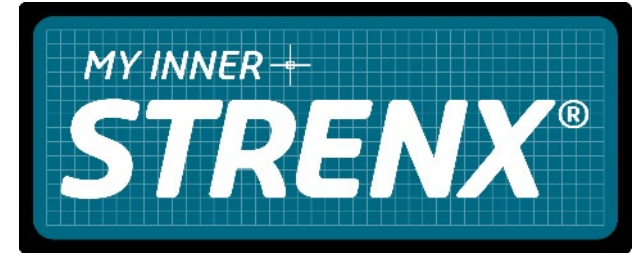
MODELS	FR 122	FR 162
Working width (m)	1.2	1.6
Weight (kg)	320	360
Driving speed up to	5-7 km/h	5-7 km/h
Min. oil flow (l/min / oil pressure)	85/230 eller 315	85/230 eller 315
Alt. oil flow (l/min / oil pressure)	100/230 eller 315	100/230 eller 315
Required hydraulic connections	1 x double acting + 1 x drain	



Flail Mower FR 122 & 162

Construction – shield:

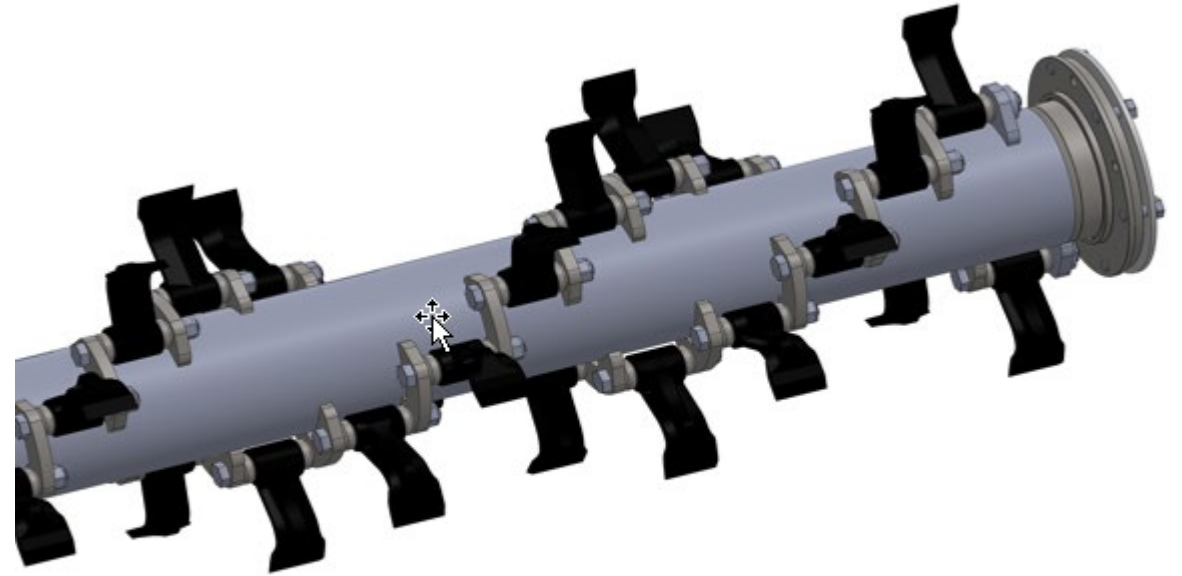
- The rotor is moved forward to improve the airflow. Better suction is achieved and the material is thrown out more efficiently
- Adjustable front for easier insertion of material
- Adjustable roller for setting the cutting height
- Made of Strenx steel
- Shield is bolted together. Two side pieces and a top piece



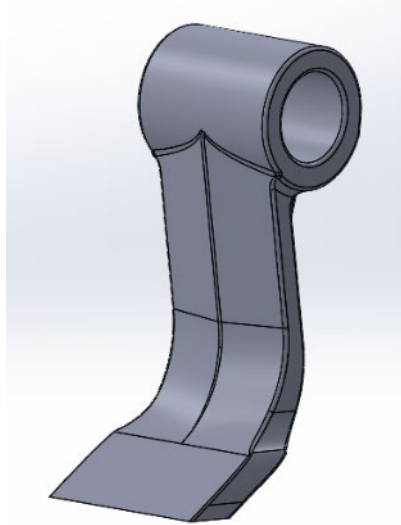
Flail Mower FR 122 & 162

Construction – rotor:

- Rotor bearings integrated in the rotor – small total width
- Double spiral rotor
- Power Band belt for maximum transfer of force
- Lubrication where dirt is pushed out of the bearings

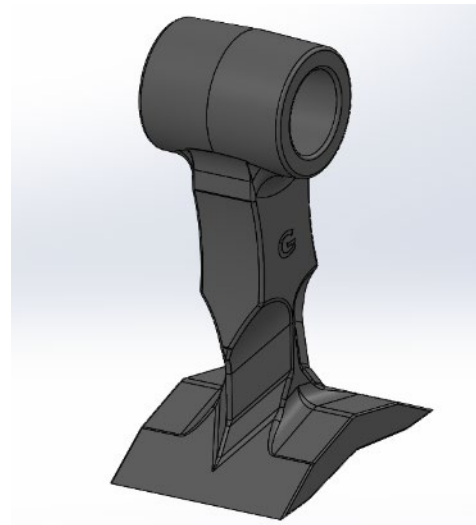


Flail Mower FR 122 & 162



C-flails:

- Large contact surface on the back
- Large width for higher capacity and airflow
- Stay sharp due to the cutting angle



T-flails:

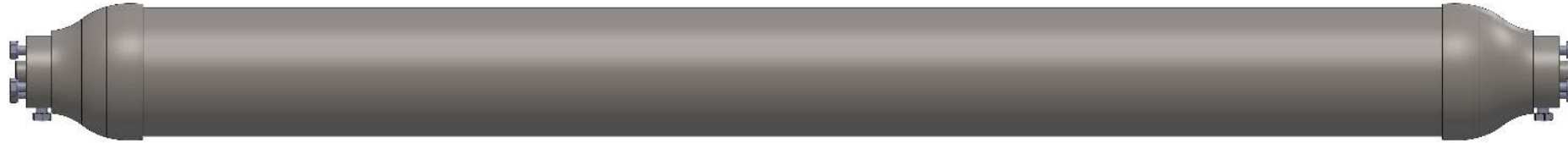
- Used for mowing stronger material, such as reeds and long stalked grass or hedge trimming



L-flails:

- Uniform cut under pressurized working conditions
- For stony areas. Can also deviate to the side

Flail Mower FR 122 & 162



Construction – rear roller:

- Two pieces of double bearings on each side
- Rounded rear roller
- Lubrication where dirt is pushed out of the bearings

