

MULTI CARRIER

HXF 2802



PARTS

UK

4th Edition 2017

 **GREENTEC**

Cutting Edge Technology

IMPORTANT INFORMATION**GreenTec HXF2800 / 2802 AHS****PARTS****4th Edition - October 2017**

NOTICE: Please ensure that this manual is handed to the operator before using the machine for the first time. If the machine is resold the Parts list must be given to the new owner!

The information contained in this Parts list is correct at the time of publication. However, in the course of constant development, changes in specification are inevitable. Should you find the information given in this book different to the machine it relates to please contact the "After Sales Department" for advice.



© GreenTec Machinery Limited 2015

CONTENTS

CONTENTS	4
INTRODUCTION	5
USEFUL INFORMATION	6
ORDERING PARTS	7
SPARE PARTS	8
Mainframe - Arm	8
Mainframe - Arm	9
Head ram	10
Splitter valve.....	11
AHS ram.....	12
Accumulator	13
Danfoss PVG valve	14
Stickers	15

INTRODUCTION

Dear customer!

Your new Greentec machine is constructed with background in more than 20 years experience with tractor-mounted machines to maintenance of green areas. This machine is produced by the latest technology and recognized safety regulations, standards and regulations.

We want to make a product available in such a way, that neither the use of the machine during transportation or maintenance of the machine causes any damage or misunderstandings.

This parts list contains information that are important and useful for maintaining your Greentec machine's reliability, dependability and value.

You are welcome to visit our website www.greentec.eu - where the login via the dealer's access gives you the latest updates on instructional and part books on our entire product range.

We hope, you will be pleased with your new Greentec machine.



Best regards,

A handwritten signature in blue ink, appearing to read "John Christensen".

John Christensen
Sales Director Greentec A/S

Greentec's vision is to develop and sell quality machines for the maintenance of green areas, including in agriculture, in industry, at airports and in the local sector. Through innovative product development, we will strive to become a leader in our field.

All machines are developed in a simple and functional design in close cooperation with dealers and end users. It is our goal to cover every need in the market segment with preferably 2 different solutions. In-depth analysis of requirements and serious advice to the customer is offered the best solution, where individual needs can be met through the modularity of the product program. Our goal is also to offer the best possible after sales service, and a quick and efficient spare parts supply.

USEFUL INFORMATION

Before using the machine for the first time, it's the seller's responsibility that the buyer is given this parts list. If the machine is resold, the parts list must be transferred to the new owner.

Please fill out the list below to ensure that the necessary information is at hand when ordering spare parts etc.

Serial No

Delivery date

Dealer

Tel/ fax



Merkurvej 25
DK 6000 Kolding
Danmark
Tel: +45 75553644
Fax: +45 75554243
Email: info@greentec.eu
web: www.greentec.eu
Opening hours: Mon-Fri 8-16

ORDERING PARTS

When ordering parts please refer to your parts list to help your dealer with your order.

- Part number and quantity
- Description
- Machine model number
- Serial number of the machine
- Delivery instructions (e.g. next day).

Delivery is normally via carrier direct to your dealer. Please check with your dealer for stock availability and arrangement of dispatch. Ensure you or your dealer has sufficient cover for parts requirement outside factory hours.

Important Note

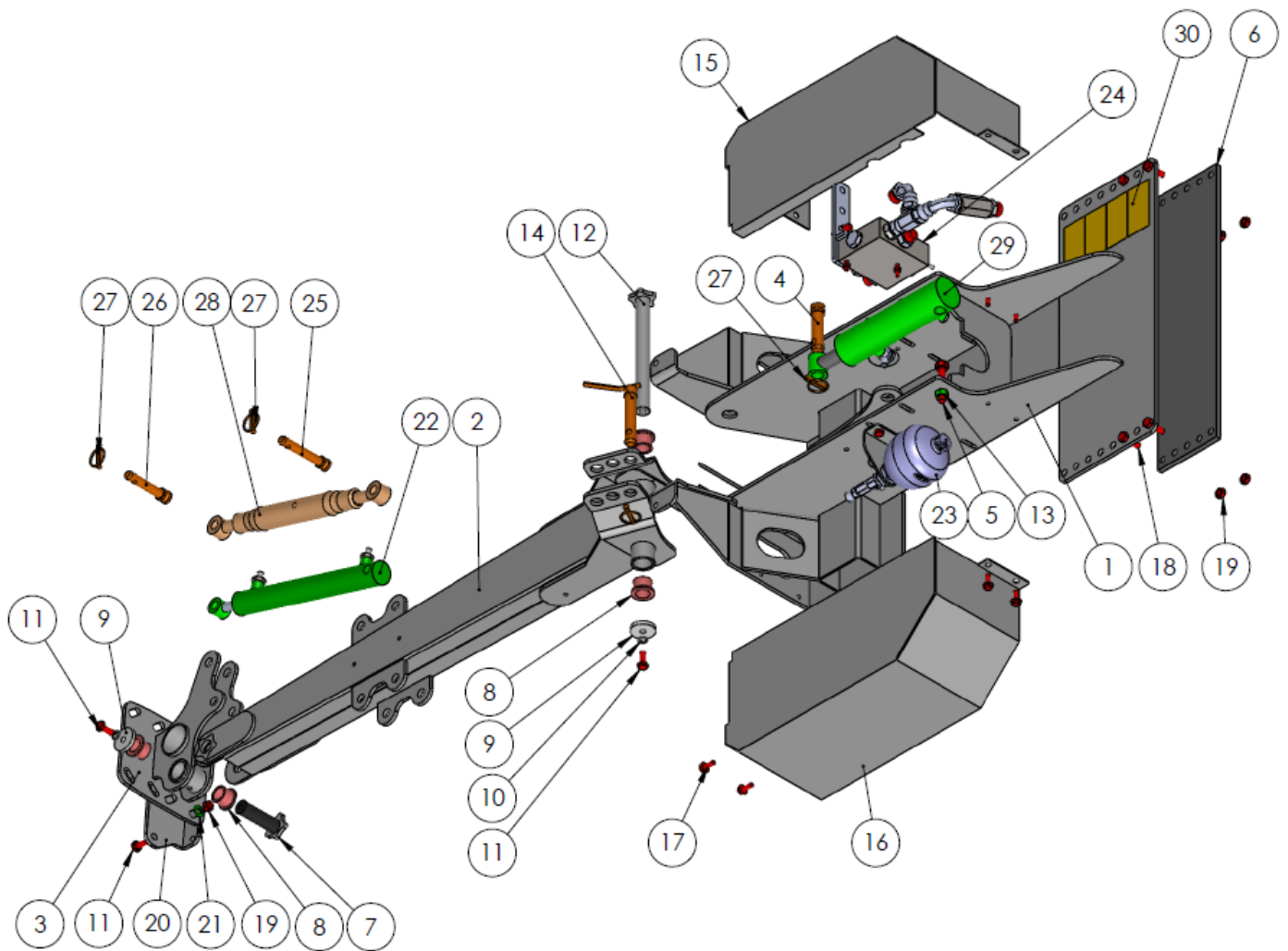
The information contained in this manual is correct at the time of publication. However, in the course of constant development, changes in specification are inevitable. Should you find the information given in this book different to the machine it relates to, please contact the "After Sales Department" for advice.

Key:

(LH)	=	Left hand
(RH)	=	Right hand

SPARE PARTS

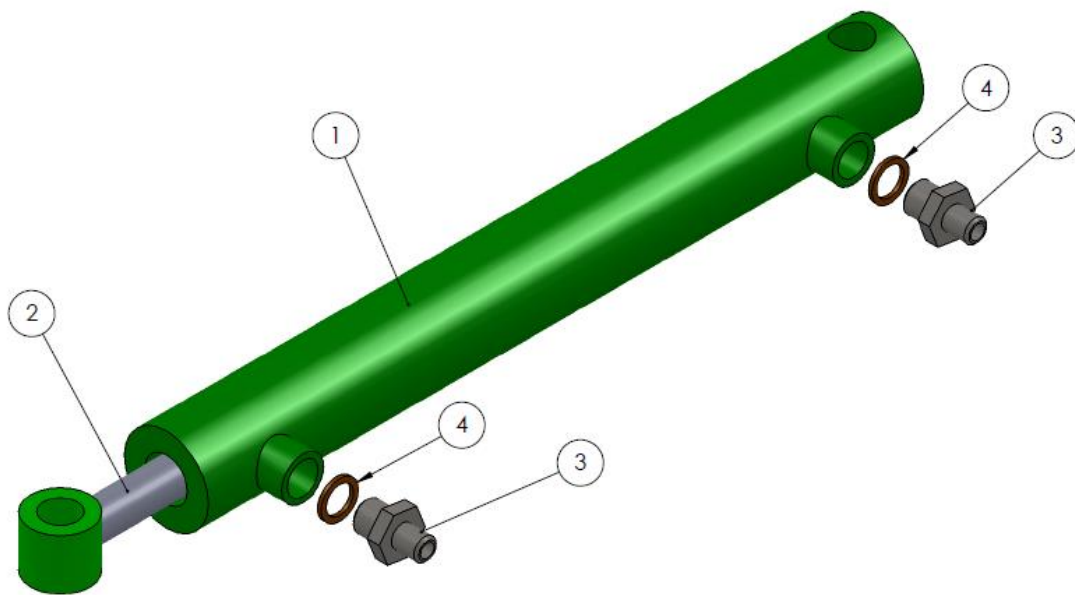
Mainframe - Arm



Mainframe - Arm

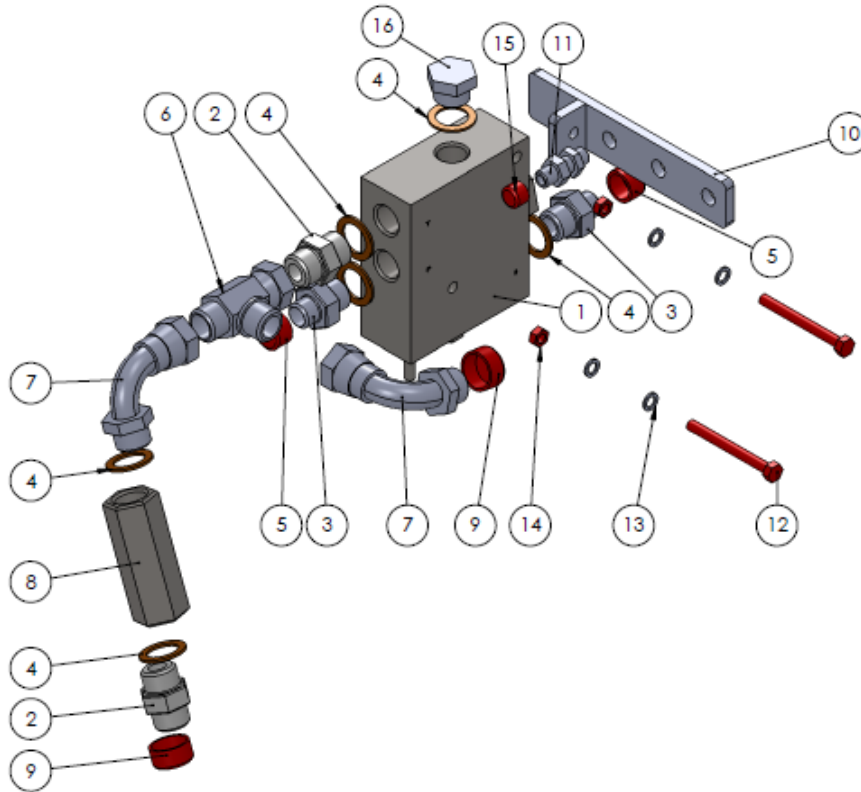
NO.	PART NUMBER	DESCRIPTION	QTY.
1	8281502	Mainframe	1
2	8281504	Arm	1
3	8281505	Head crowd bracket	1
4	6706006	Pin	1
5	8352001	Adjuster bolt M16x80	2
6	8331001	Mounting plate	2
7	8281506	Star pin	1
8	8284001	Bush	4
9	8281001	Retaining washer	2
10	8222005	Lock washer	2
11	8222006	Bolt M12x30	4
12	8281507	Star pin	1
13	2770449	Nut	2
14	6706003	Bolt with handle	1
15	8281508	Cover	1
16	8281509	Cover	1
17	200104.0	Screw	8
18	8362006	Bolt	8
19	8362005	Lock nut	10
20	8281002	Leg stand	1
21	2770434	Washer M12	2
22		See "Head ram"	1
23		See "Accumulator"	1
24		See "Splitter valve"	1
25	8286002	Pin	1
26	6310202	Pin	1
27	00.372.01	Lynch pin	4
28	8286003	Toplink	1
29		See "AHS ram"	1
30		See "Stickers"	1

Head ram



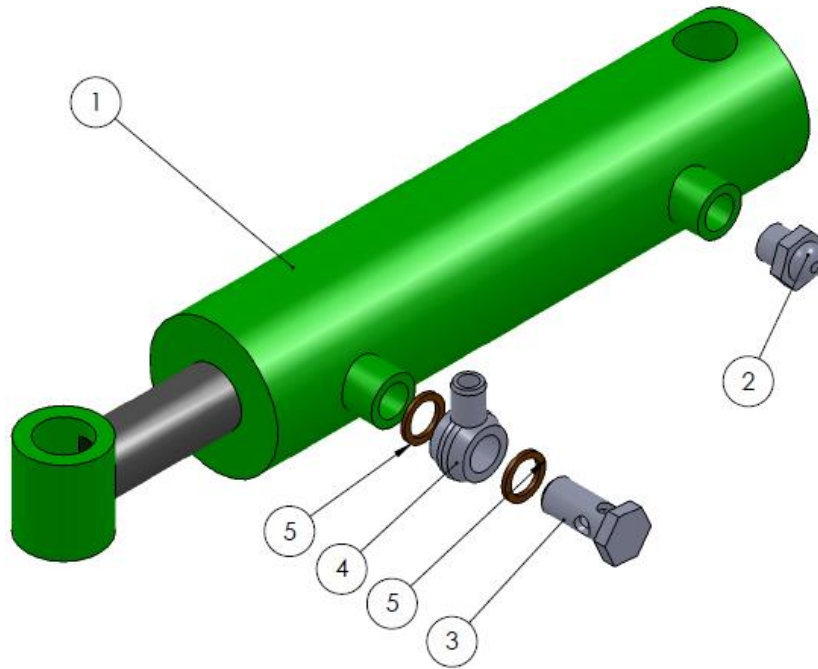
NO.	PART NUMBER	DESCRIPTION	QTY.
1	8283007	Head ram	1
3	6703002	Adapter with restrictor	2
4	6703003	Seal 3/8"	2

Splitter valve



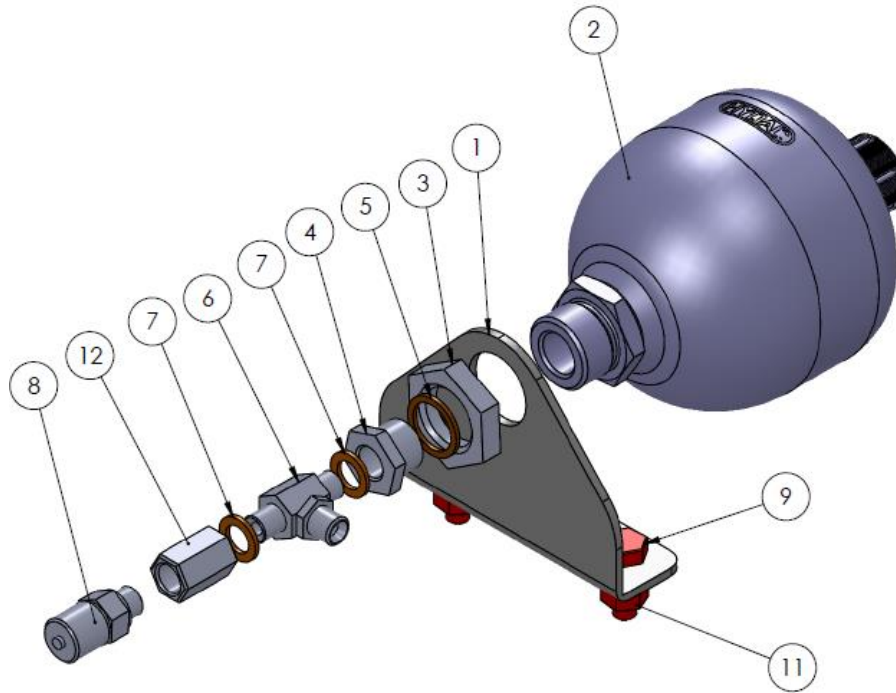
NO.	PART NUMBER	DESCRIPTION	QTY.
1	8283008	Splitter valve (Not adjusted)	1
2	8283009	Adapter 3/4"	2
3	8283010	Adapter 3/4" - 1/2"	2
4	8283011	Seal 3/4"	6
5	N/A		2
6	8283012	T-adapter 3/4"	1
7	8283013	Angle 90° 3/4"	2
8	8283014	Check valve 0,5 bar 3/4"	1
9	N/A	Plastic lid	2
10	8281501	Hose holder	1
11	8283015	Bulkhead adapter	1
12	8222002	Bolt	2
13	2770456	Spacer	4
14	2770416	Lock nut	2
15	N/A	Plastic lid	1
16	8283016	Plug	1

AHS ram



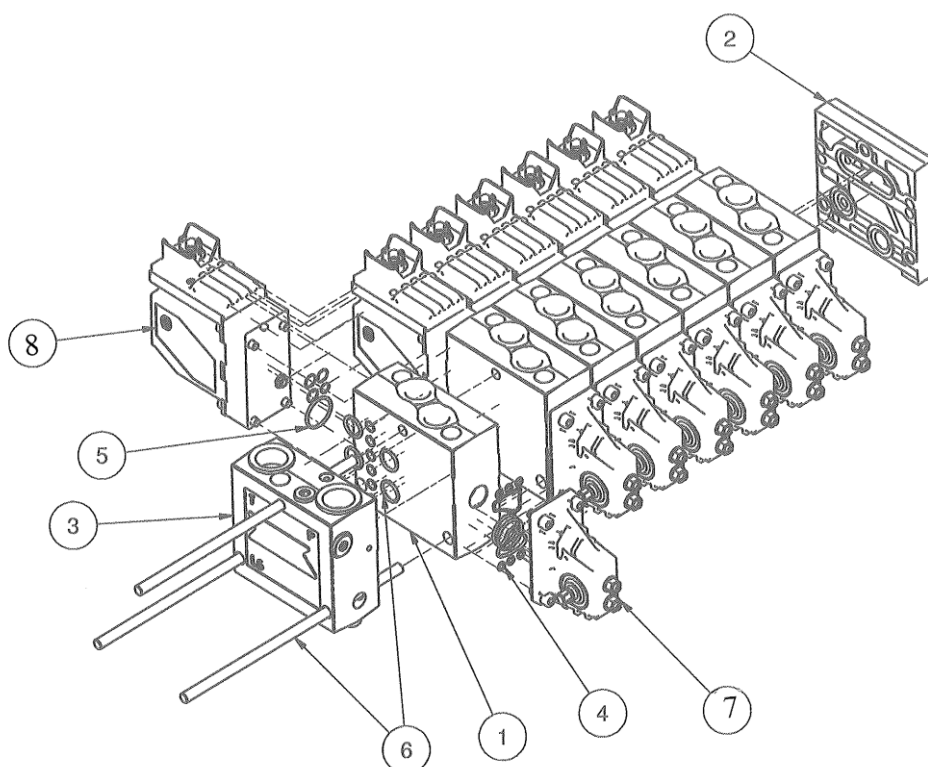
NO.	PART NUMBER	DESCRIPTION	QTY.
1	8283017	AHS ram	1
2	6703013	Airfilter 3/8"	1
3	6703012	Banjobolt 3/8"	1
4	6703011	Banjo 3/8"	1
5	6703003	Seal 3/8"	2

Accumulator



NO.	PART NUMBER	DESCRIPTION	QTY.
1	8281003	Bracket	1
2	6703005	Accumulator (not pressure set)	1
3	6702005	Nut M33	1
4	6703009	Reduction 1/2" – 1/4"	1
5	6703010	Seal 1/2"	1
6	6703006	T-adaptor 1/4"	1
7	8143005	Seal 1/4"	2
8	6703007	Mini-Mesh	1
9	8222006	Bolt 10x30	2
10	2770436	Facet washer M10	2
11	2770412	Lock nut M10	2
12	6703008	Socket 1/4"	1

Danfoss PVG valve



NO.	PART NUMBER	DESCRIPTION	QTY.
	8283018	Valve cpl.	1
1	157B6709	Priority module <i>(no.is stamped in one end)</i>	1
	157B6200	Motor module <i>(no.is stamped in one end)</i>	1
	157B6100	Tool module <i>(no.is stamped in one end)</i>	1
2	157B2018	End lid	1
3	157B5010	End lid – pressure <i>no.is stamped in one end)</i>	1
4	157B3999	Seal kit for mechanical part	1
5	157B4997	Seal kit for electric part	1
6	157B8003	Seal kit <i>cpl. for 3 module (incl. long bolts and nuts)</i>	1
7	157B3173	House for manual operation Cpl. incl. Pos. 4	1
8	157B4216	Elec-module 12V incl. pos. 5	1
Not shown:			
	157B7000	Spool DA 10 l	1
	157B7103	Spool DA 65 l open	1

Stickers



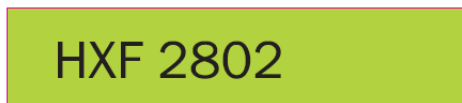
HXF2802 advarselmærker - 266 x 112 mm



8770322 Smørring - 50 x 24 mm



HXF2802 klistermærke top - 560 x 120 mm



HXF2802 klistermærke bund - 560 x 120 mm



8770296 - 45 x 112 mm



GreenTec_Påbudsmærker - 130 x 25 mm



Made in denmark - 50 x 16 mm

HXF2802 KITS

NO.	PART NUMBER	DESCRIPTION	QTY.
1	HXF2802KITS	Stickers cpl.	1



Merkurvej 25 | DK-6000 Kolding | Tel.: +45 75 55 36 44 | info@GreenTec.eu | www.GreenTec.eu

Cutting Edge Technology