

SCORPION 6 & 8

PRODUCT PRESENTATION

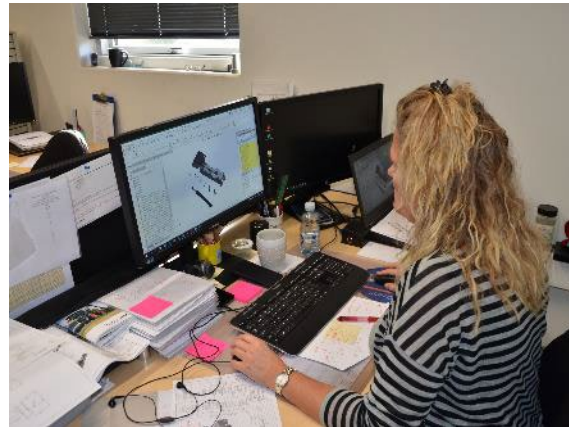
September 2021 (VER. 1.2)



GreenTec A/S

GreenTec is a Danish company specialized in machines for maintenance of green areas.

Since 1979, GreenTec has developed a comprehensive program of machines that are mainly used for grass mowing, windbreak maintenance and hedge trimming.

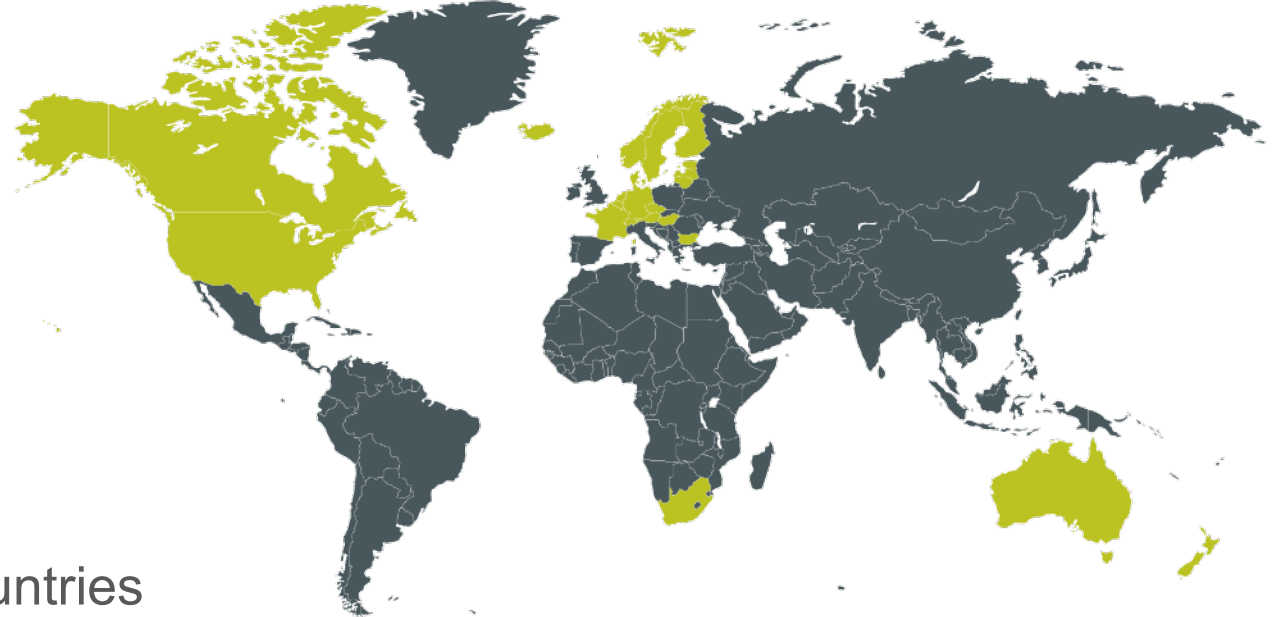


HISTORY

- | | |
|--|---|
| 1979: Company founded. Tractor & car dealer | 2014: Kim and Thomas became Co-Owners of GreenTec together with John |
| 1992: Import agreement with Spearhead Machinery Ltd initiated | 2016: The manufacturing facilities were expanded by 1,200 m ² |
| 1998: GreenTec started in-house production | 2018: 26 years of collaboration with Spearhead ended |
| 2001: Quadsaw LRS 2001 was developed | 2018: Scorpion series was developed |
| 2007: New manufacturing facilities | 2019: Flail mower FR series was developed |
| 2010: Multi Carrier HXF was developed | |

KEY FIGURES FOR 2020

- 34 employees in development, production, warehouse, sales, marketing and administration
- Employees in Germany and France
- Facilities of 5500 m²
- 6500 spare part numbers in stock
- 1500 sold machines per year
- Dealers and customers in more than 30 countries



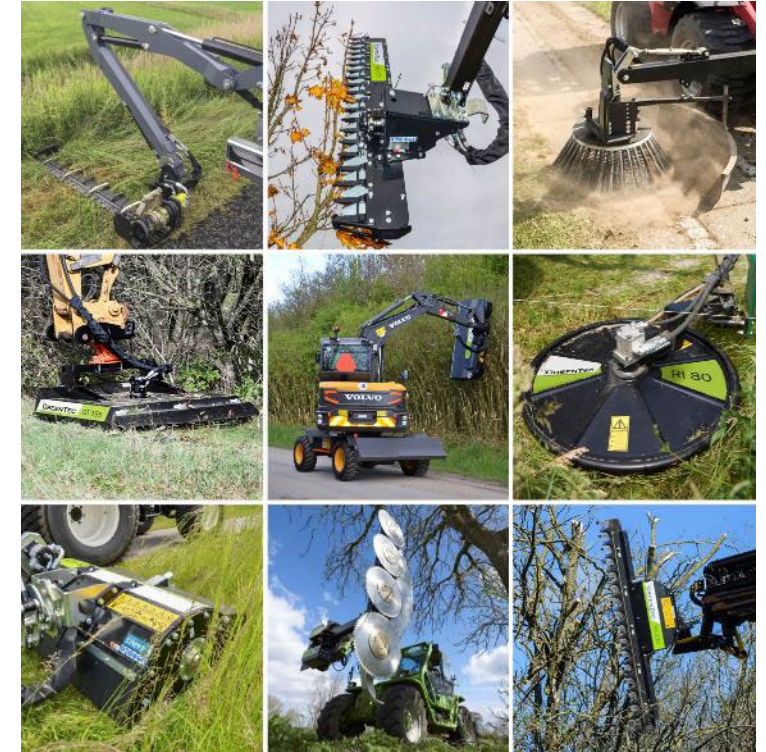
PRODUCTS



**4 models of
multi carriers**



**12 models of
Scorpion boom mowers**



**The largest selection of
tools in the market**

TABLE OF CONTENTS

- [SCORPION MODELS](#)
- [SCORPION VARIANTS](#)
- [FOCUS AREAS](#)
- [SAFETY: 4-point mounting](#)
- [SAFETY: 4-point mounting, upper](#)
- [SAFETY: 4-point mounting, lower](#)
- [SAFETY: Ball valves for transport safety](#)
- [SAFETY: Pressure relief of the tool socket](#)
- [SAFETY: LED lights and underrun bumper](#)
- [SAFETY: Fork pockets and support legs](#)
- [SAFETY: Counterweights](#)
- [ERGONOMICS: Range of motion](#)
- [ERGONOMICS: Reaches with Rotor Flex](#)
- [ERGONOMICS: My Inner Strenx](#)
- [ERGONOMICS: Hybrid Arm System](#)
- [ERGONOMICS: Rotor Flex](#)
- [ERGONOMICS: Auto Flex](#)
- [ERGONOMICS: LogiTec Safe control](#)
- [EFFICIENCY: Auto Height Control \(AHC\)](#)
- [EFFICIENCY: Bondioli gearbox](#)
- [EFFICIENCY: Different oil flows for tools](#)
- [EFFICIENCY: Easy overview of valve blocks](#)
- [EFFICIENCY: Air Stream Control](#)
- [EFFICIENCY: Swivel joint](#)
- [EFFICIENCY: Canbus wiring harness](#)
- [EFFICIENCY: Bio oil](#)
- [EFFICIENCY: Fuel saving](#)
- [EFFICIENCY: Mechanical quick release](#)
- [EFFICIENCY: Hydraulic quick release](#)
- [EFFICIENCY: Extra outlet for tool](#)
- [TOOLS](#)
- [TOOLS: Leaf Blower LG](#)
- [TOOLS: Limb trimming](#)
- [TOOLS: Hedge trimming](#)
- [TOOLS: Grass and brush mowing](#)
- [MAINTENANCE](#)
- [2 YEARS WARRANTY](#)
- [WEBSITE](#)
- [SPARE SPARTS FROM GREENTEC](#)

SCORPION MODELS

12

Tools



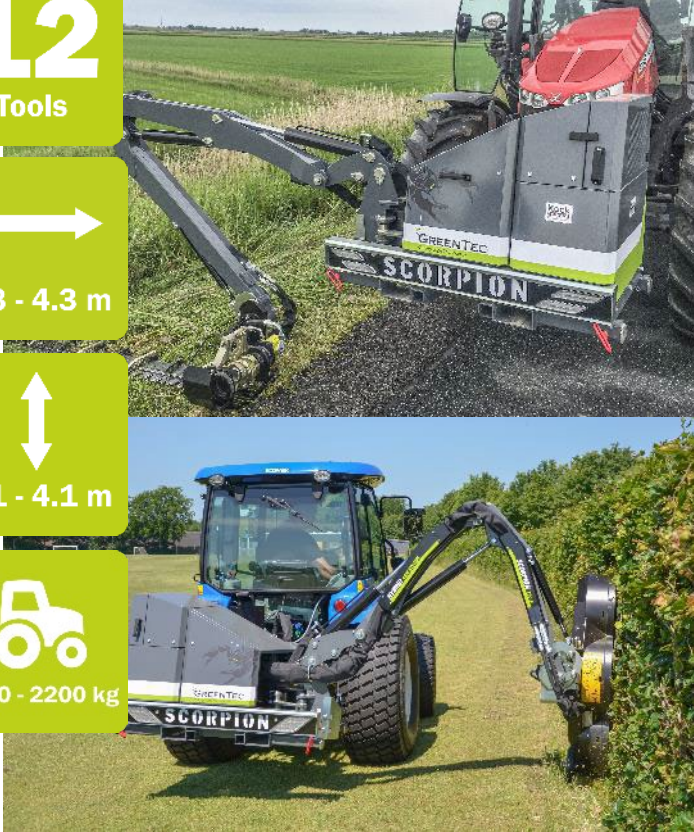
3.3 - 4.3 m



3.1 - 4.1 m



1500 - 2200 kg



SCORPION 330 & 430 S/PLUS

20

Tools



5.3 - 6.3 m



5.1 - 6.1 m



4000 - 5000 kg



SCORPION 530 & 630 S/PLUS

20

Tools



7.3 - 8.3 m



7.1 - 8.1 m



7000 - 8000 kg



SCORPION 730 & 830 S/PLUS

SCORPION MODELS



	4-Series				6-Series				8-Series			
MODELS	330-4 S	430-4 S	330-4 PLUS	430-4 PLUS	530-6 S	630-6 S	530-6 PLUS	630-6 PLUS	730-8 S	830-8 S	730-8 PLUS	830-8 PLUS
Horizontal reach (m)	3.3	4.3	3.3	4.3	5.3	6.3	5.3	6.3	7.3	8.3	7.3	8.3
Vertical reach (m)	3.1	4.1	3.1	4.1	5.1	6.1	5.1	6.1	7.1	8.1	7.1	8.1
Transport width (m)	1.8	2.2	1.8	2.2	2.2	2.2	2.2	2.2	2.4	2.5	2.4	2.5
Hydraulic system	52 l/min @ 210 bar		52 l/min @ 210 bar		115 l/min @ 230 bar		125 l/min @ 315 bar		115 l/min @ 230 bar		125 l/min @ 315 bar	
Min. size of vehicle (kg)	1,500	2,000	1,650	2,200	4,000	5,000	4,000	5,000	7,000	8,000	7,000	8,000
Weight (kg)	570	590	590	610	1,230	1,270	1,370	1,395	1,475	1,505	1,600	1,630

SCORPION VARIANTS



SCORPION
S-Series



SCORPION 6 & 8	S-SERIES	PLUS-SERIES
Hydraulic system (l/min @ bar)	115 @ 230	125 @ 315
Pump LS (ccm)	56	60
Gearbox (size)	M7	M9
Rotor Flex, 270° turn of cutting head	Option	Standard
Auto Flex, aut. vertical positioning	Option	Standard
Lights	LED	LED PLUS

SCORPION
PLUS-Series



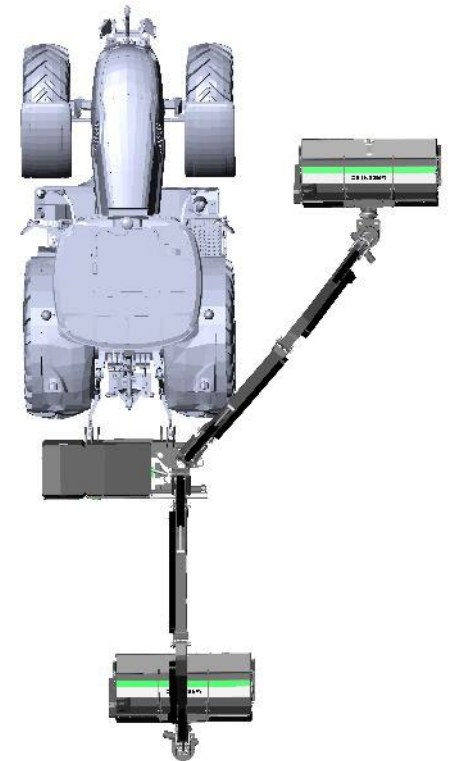
SCORPION VARIANTS



SCORPION
S-Series



SCORPION
PLUS-Series



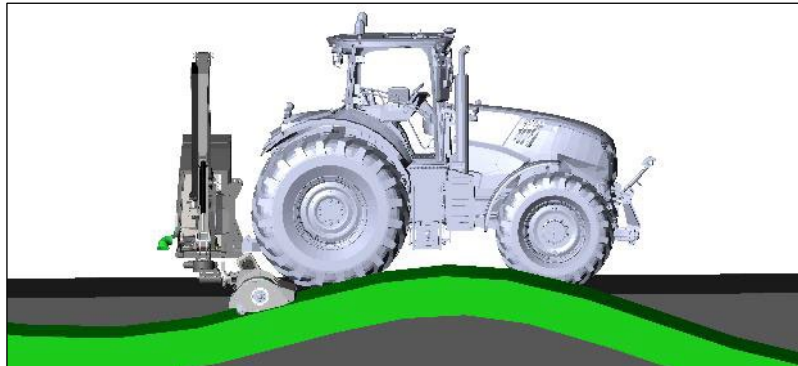
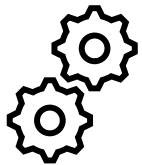
FOCUS AREAS



SAFETY



ERGONOMICS



EFFICIENCY



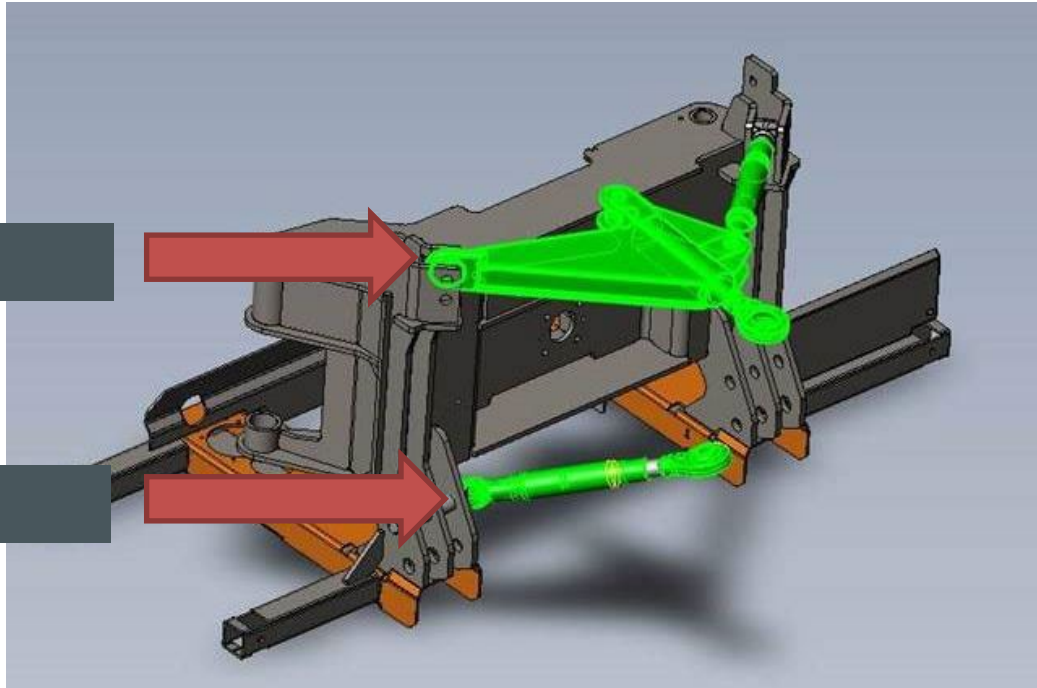
TOOLS



SAFETY: 4-point mounting

Upper 4-point

Lower 4-point



SAFETY: 4-point mounting

DEKRA:

- Worldwide company that specializes in testing and certification in the automotive industry, energy sector, etc.
- German origin, present in 50 countries

GENERAL INFORMATION

Customer: Scharmüller
Test specimen: ball towing device 80
Type: 80-340100
Sample receipt: 19171 2020-03-23

TEST SYSTEM

Test cylinder: 160K HCM: 3
effect. lenght L: Tower: 1

TEST PARAMETER

Directive: regulation (EU) 2015/208
Type of test: one-component, swelling stress, tension
D 26 kN S 0 kg v>40 km/h

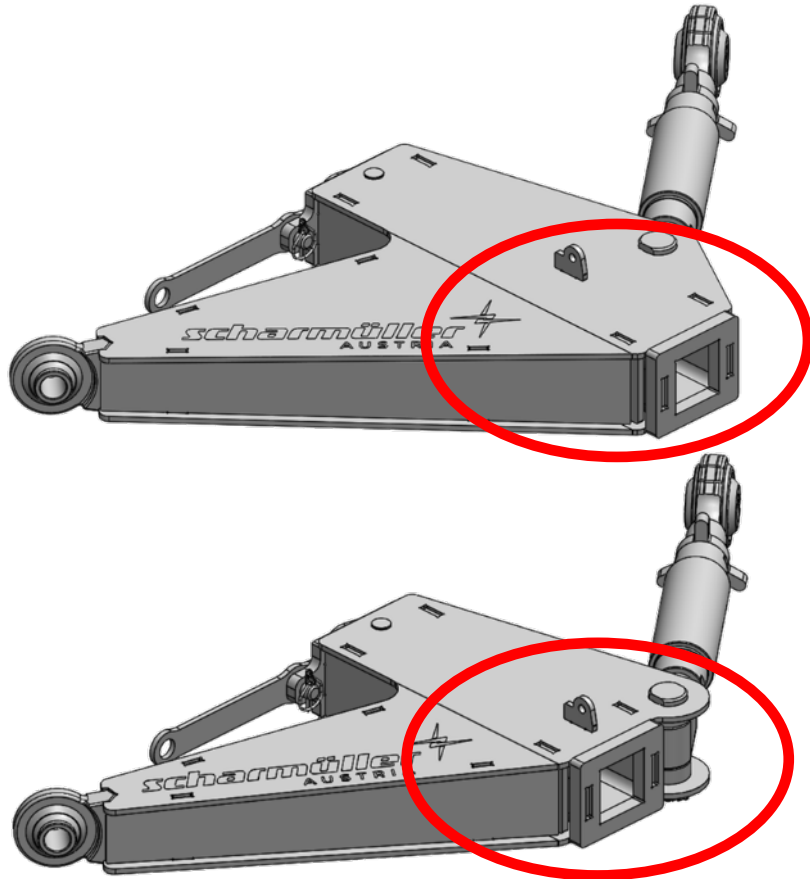
F _{max} [kN]	F _{min} [kN]	α Force [deg]	direction
26	1,3	0,0	tension
cycles	f [Hz]	test bench	controler
2.000.000	5	5	force



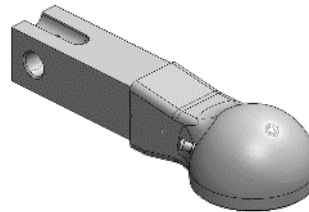
RESULT:

The test specimen completed the required fatigue test over 2 million load cycles without any visible damages. The crack detection test did not show signs.

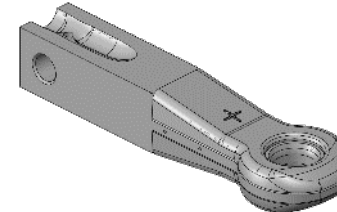
SAFETY: 4-point mounting, upper



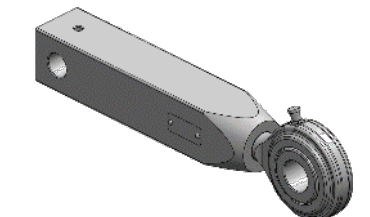
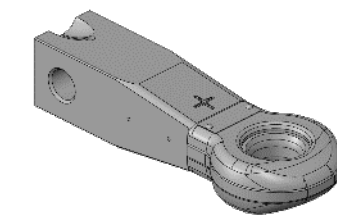
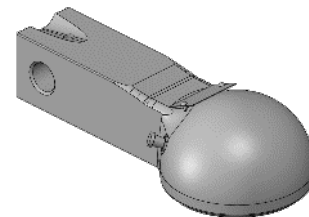
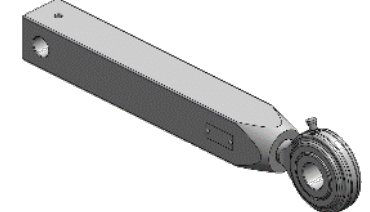
K80



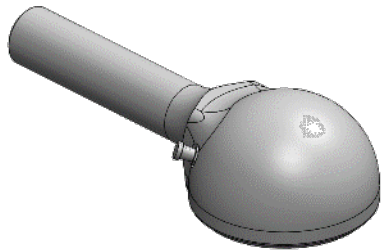
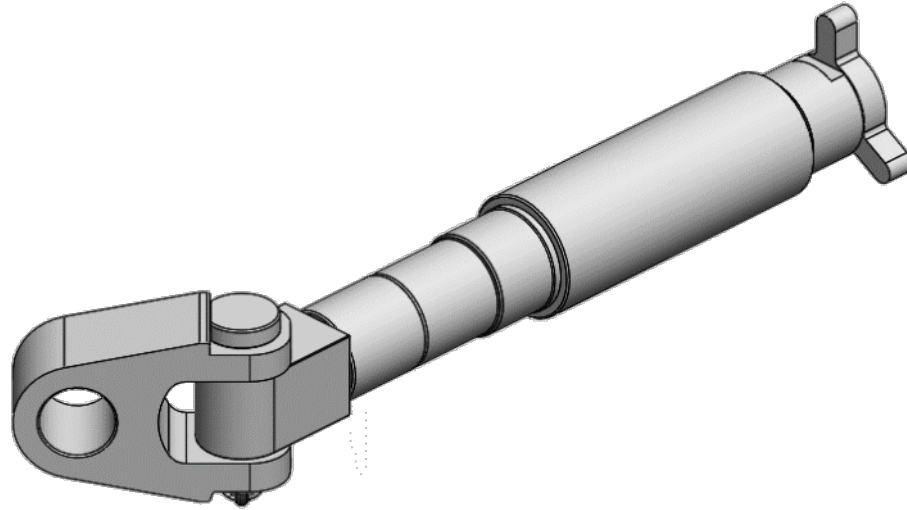
Zugmaul



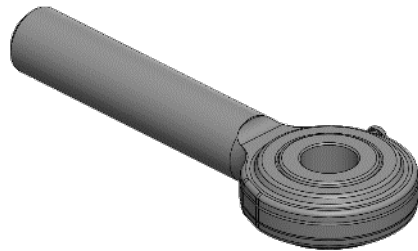
Toplink



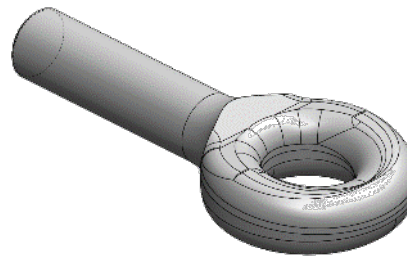
SAFETY: 4-point mounting, lower



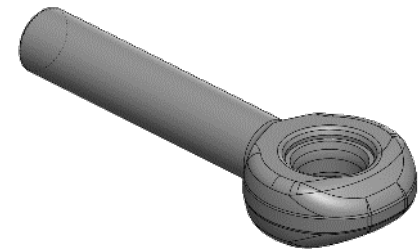
K80



Cat. 2



Ø50

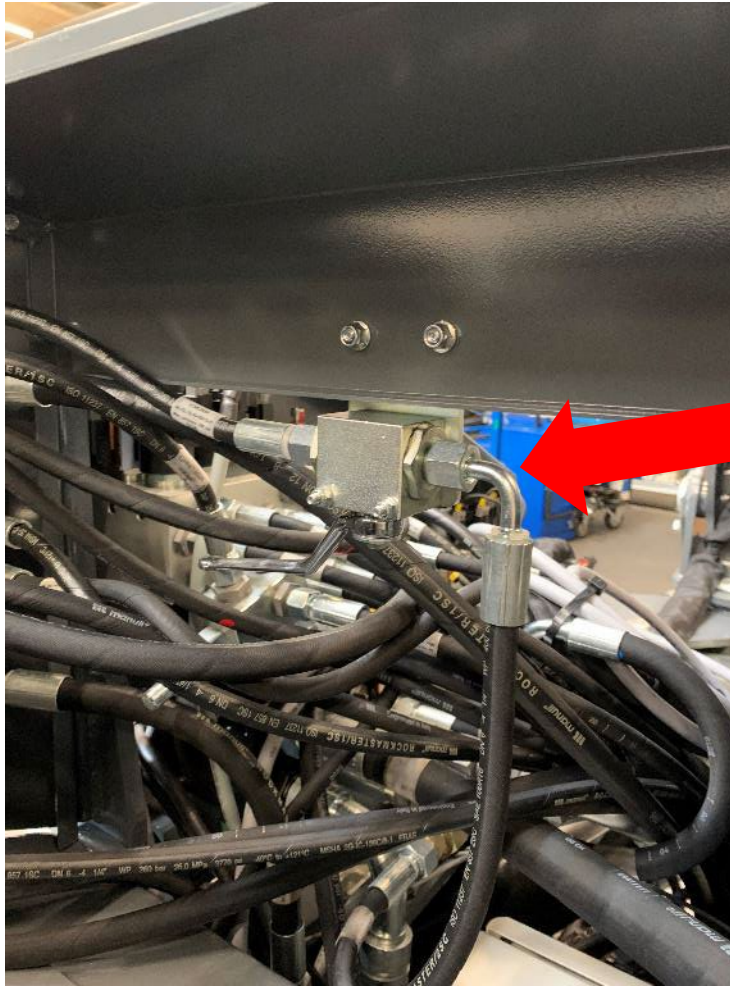


Zugmaul

SAFETY: Ball valves for transport safety



SAFETY: Pressure relief of tool socket



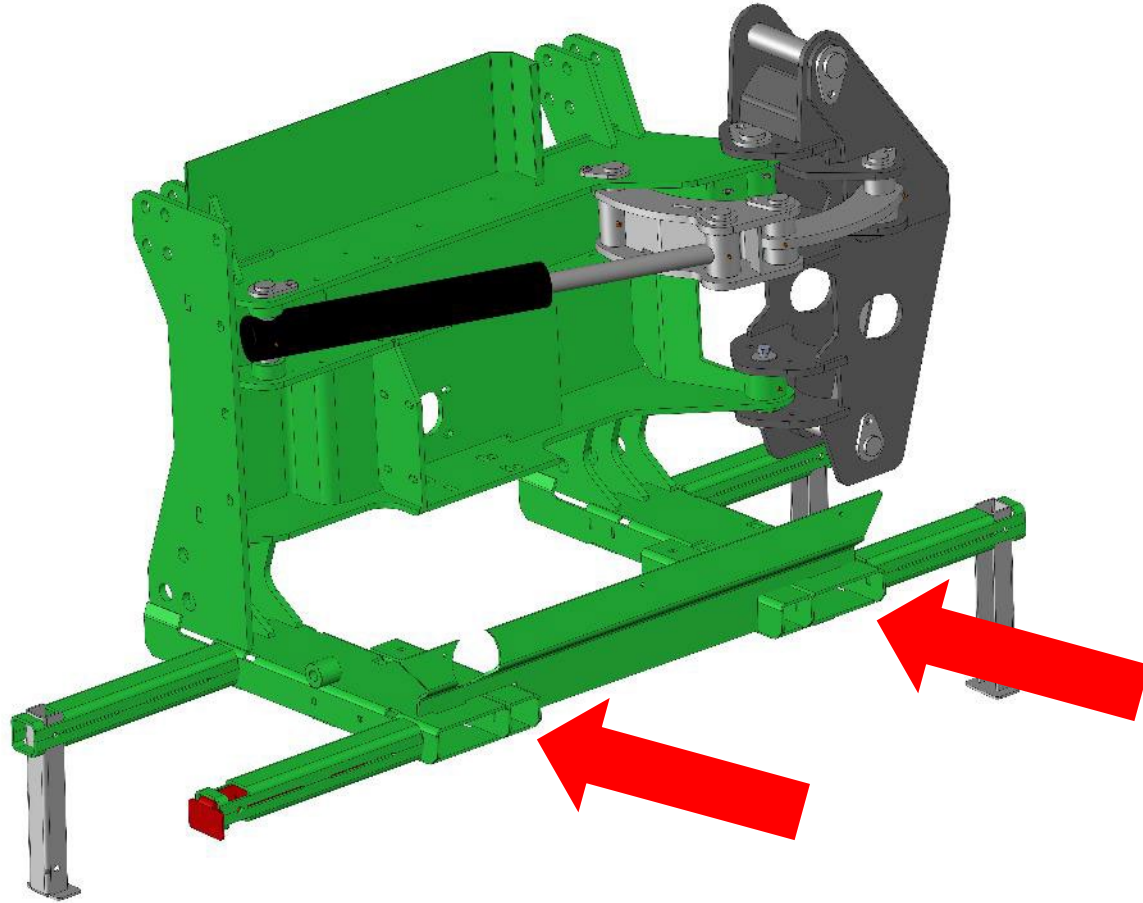
Pressure relief of tool:

- When the position is open, the oil goes to the tank instead of the tool
- Removes the pressure from quick couplings
- Safety when changing flails

SAFETY: LED lights and underrun bumper



SAFETY: Fork pockets and support legs

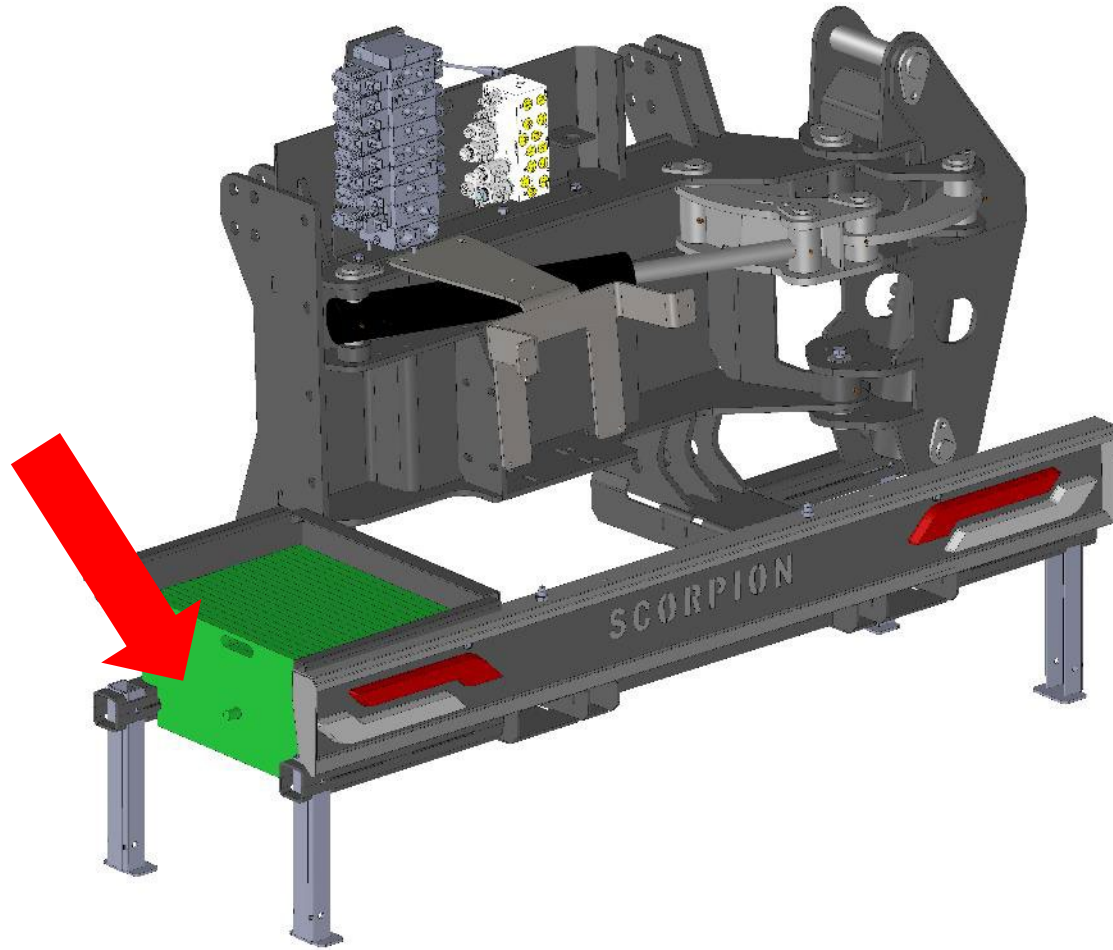


Fork pockets and support legs:

- Closed fork pockets for safe handling during loading and unloading
- Solid support legs with large distance for increased stability

SAFETY: Counterweights

Option

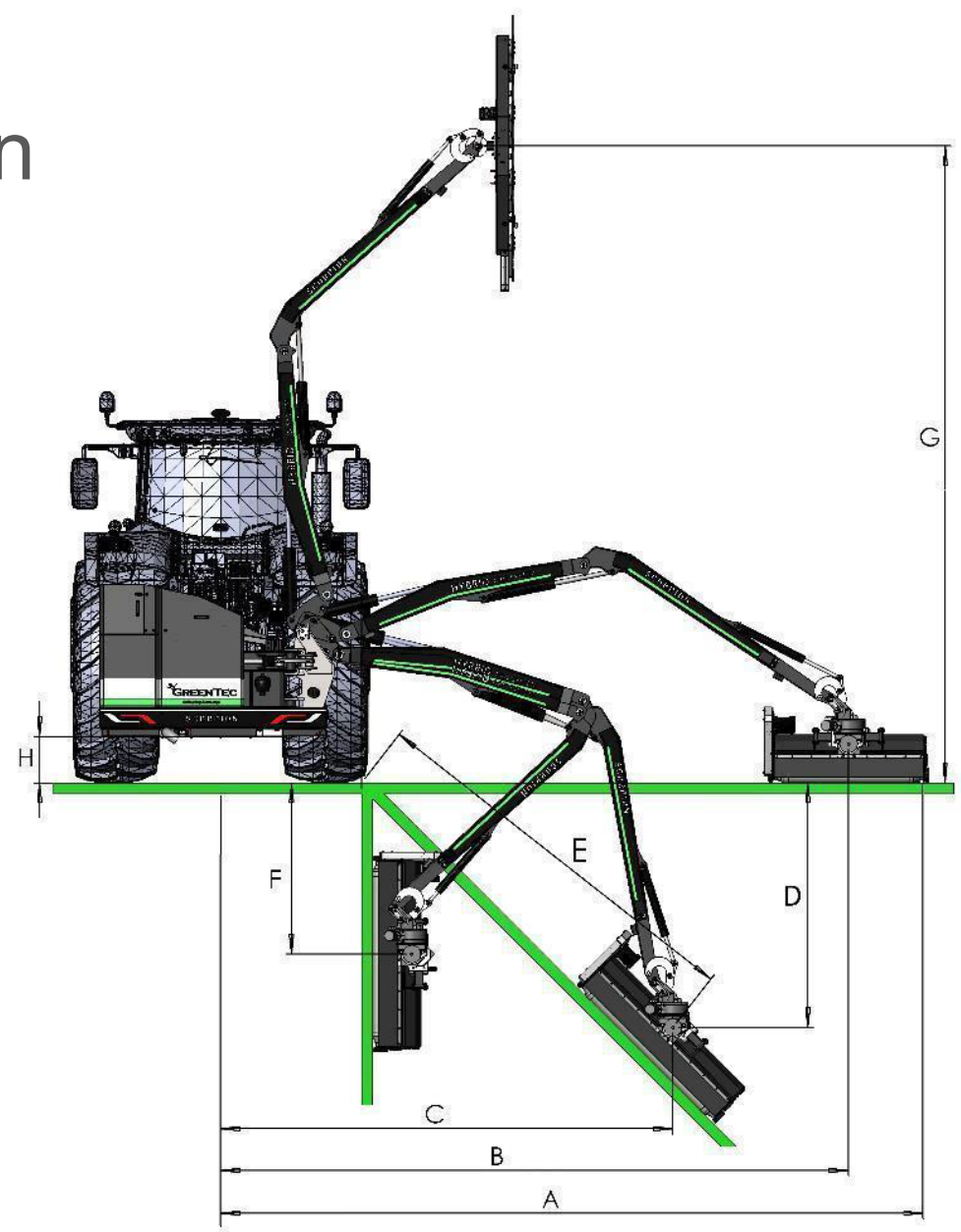


Counterweights:

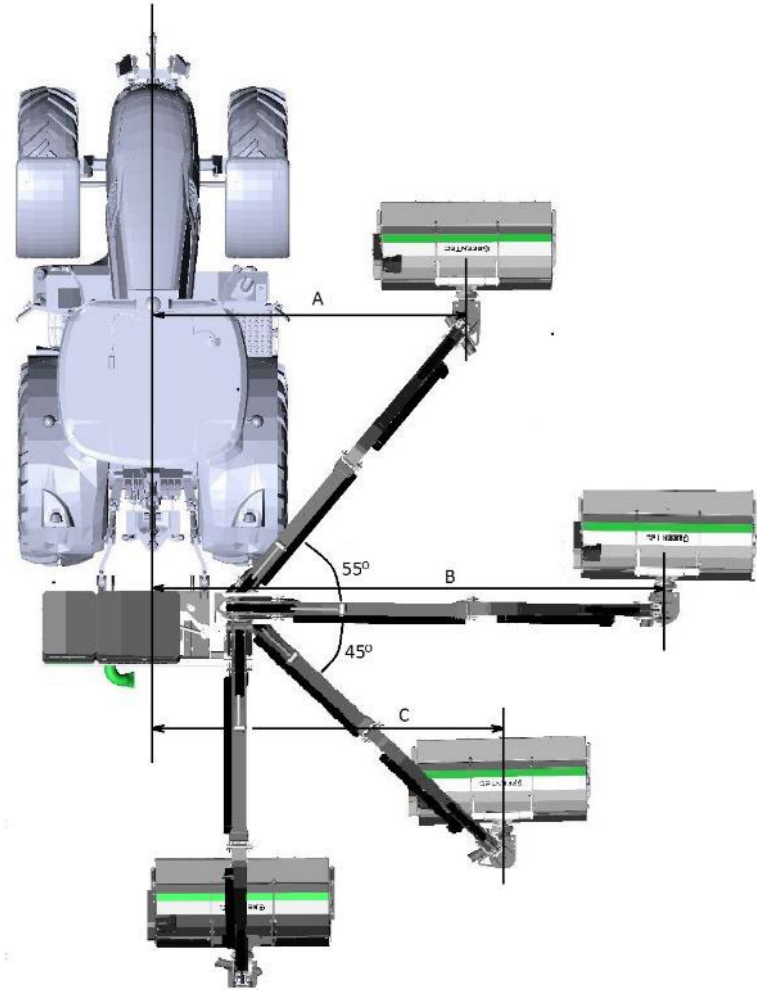
- Ensure stability in the machine
- Bottom position for low center of gravity
- 20 weight plates – a total of 400 kg

ERGONOMICS: Range of motion

SCORPION	530	630	730	830
A (m)	5.3	6.3	7.3	8.3
B (m)	4.7	5.7	6.7	7.7
C (m)	3.4	4.1	4.8	5.6
D (m)	1.8	2.2	2.6	3.1
E (m)	3.0	3.7	4.4	5.0
F (m)	1.5	1.8	2.2	2.6
G (m)	5.1	6.1	7.1	8.1
H (m)	0.4	0.4	0.4	0.4

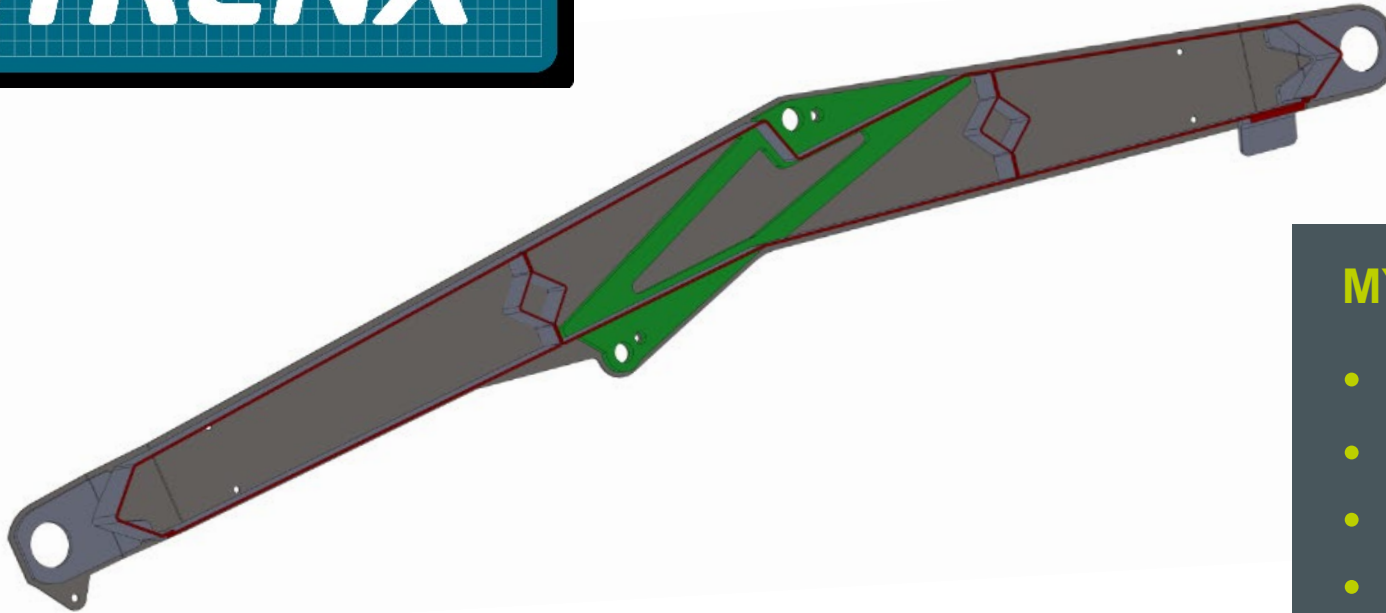
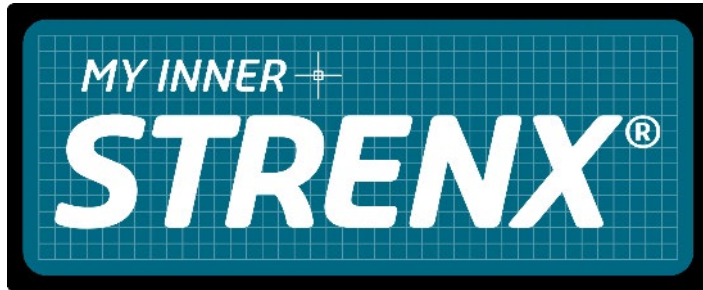


ERGONOMICS: Reaches with Rotor Flex



SCORPION	530	630	730	830
A (m)	2.6	3.2	3.8	4.3
B (m)	4.7	5.7	6.7	7.7
H (m)	3.0	3.6	4.2	4.9

ERGONOMICS: My Inner Strenx



Design approved by
SSAB for usage of its
steel

MY INNER STRENX:

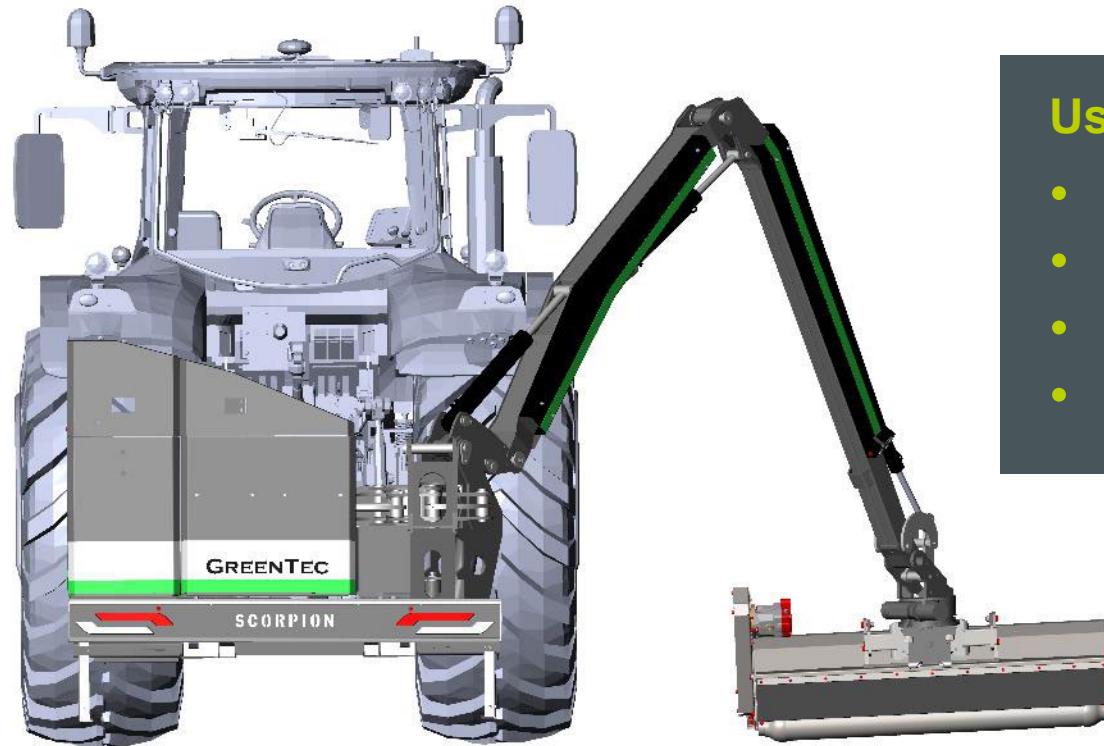
- World's strongest manufacturing steel
- 25% weight reduction
- 50% stronger construction
- "My Inner Strenx"-Partner



ERGONOMICS: Hybrid Arm System

Hybrid Arm System:

- Two options
 - Parallel
 - Non-parallel
- Increased flexibility
- Higher efficiency
- Telescope unnecessary
 - Fewer lubrication points
 - Lighter construction
 - Less wear
- Simple build



Useful applications:

- Forest areas
- Bicycle paths
- Deep ditches
- Narrow roads

ERGONOMICS: Rotor Flex

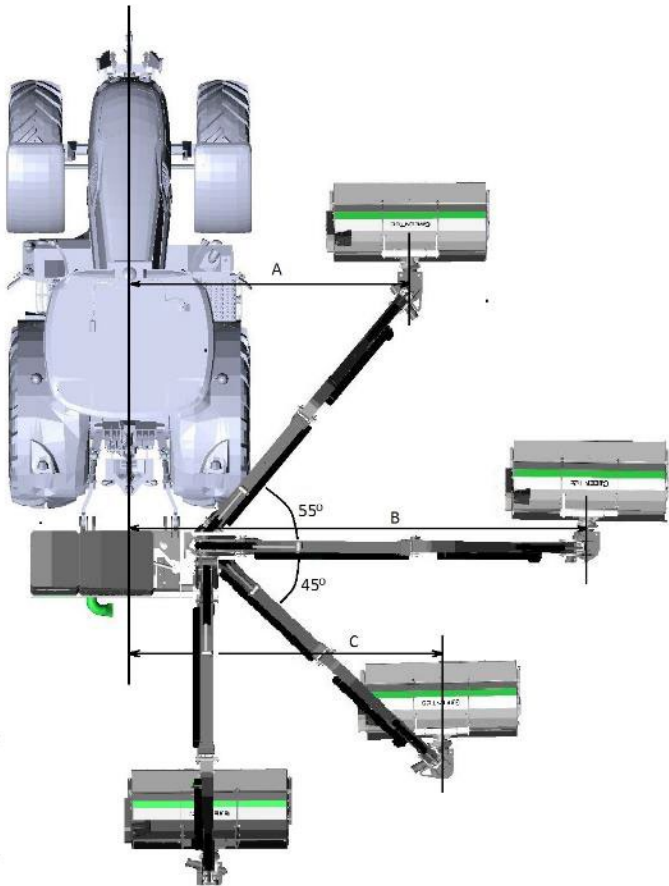


Rotor Flex:

- Better view to the tool
- Increased flexibility
- Higher efficiency
- Optimized transport safety



ERGONOMICS: Rotor Flex



SCORPION	530	630	730	830
A (m)	2.6	3.2	3.8	4.3
B (m)	4.7	5.7	6.7	7.7
H (m)	3.0	3.6	4.2	4.9



ERGONOMICS: Auto Flex



Auto Flex:

- Automatic vertical positioning for hedge trimming
- Relieves the user
- Possible to drive forward and backward
- Standard on Scorpion PLUS models
- Must be deactivated before the machine can be folded to transport position



ERGONOMICS: LogiTec Safe control

Joystick:

- Danfoss joystick
- Ergonomic design
- 4 proportional functions
- Buttons for switch function



An acoustic warning will occur if the working pressure is too high or if the oil is too hot.



EFFICIENCY: Auto Height Control (AHC)

Option



Auto Height Control:

- Work relief for the driver
- Increased road safety
- Lower maintenance costs
- Increased capacity
- Continuously adjustable



EFFICIENCY: Bondioli gearbox

SCORPION 6 & 8	S-SERIES	PLUS-SERIES
Hydraulic system (l/min @ bar)	115 @ 230	125 @ 315
Pump LS (ccm)	56	60
Gear box (size)	M7	M9
Tank capacity (hydraulic oil)	220 liters	



EFFICIENCY: Different oil flow for tools



Electric change of oil flows:

- Save time when switching between 50 and 85 l/min
- Easy access
- Avoid oil flow divider
- Reduce heat generation of the hydraulic oil and ensure long life

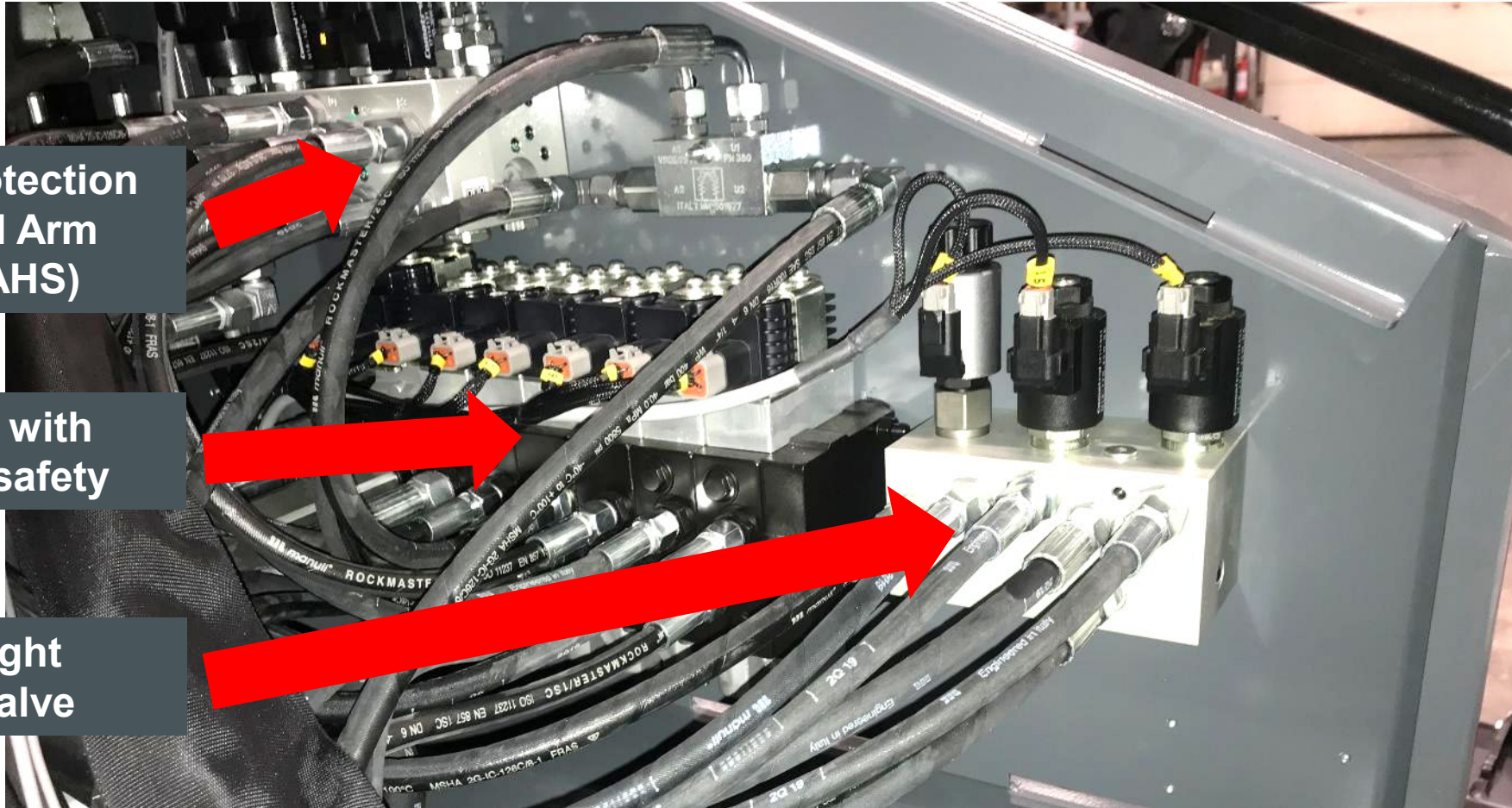
EFFICIENCY: Easy overview of valve blocks



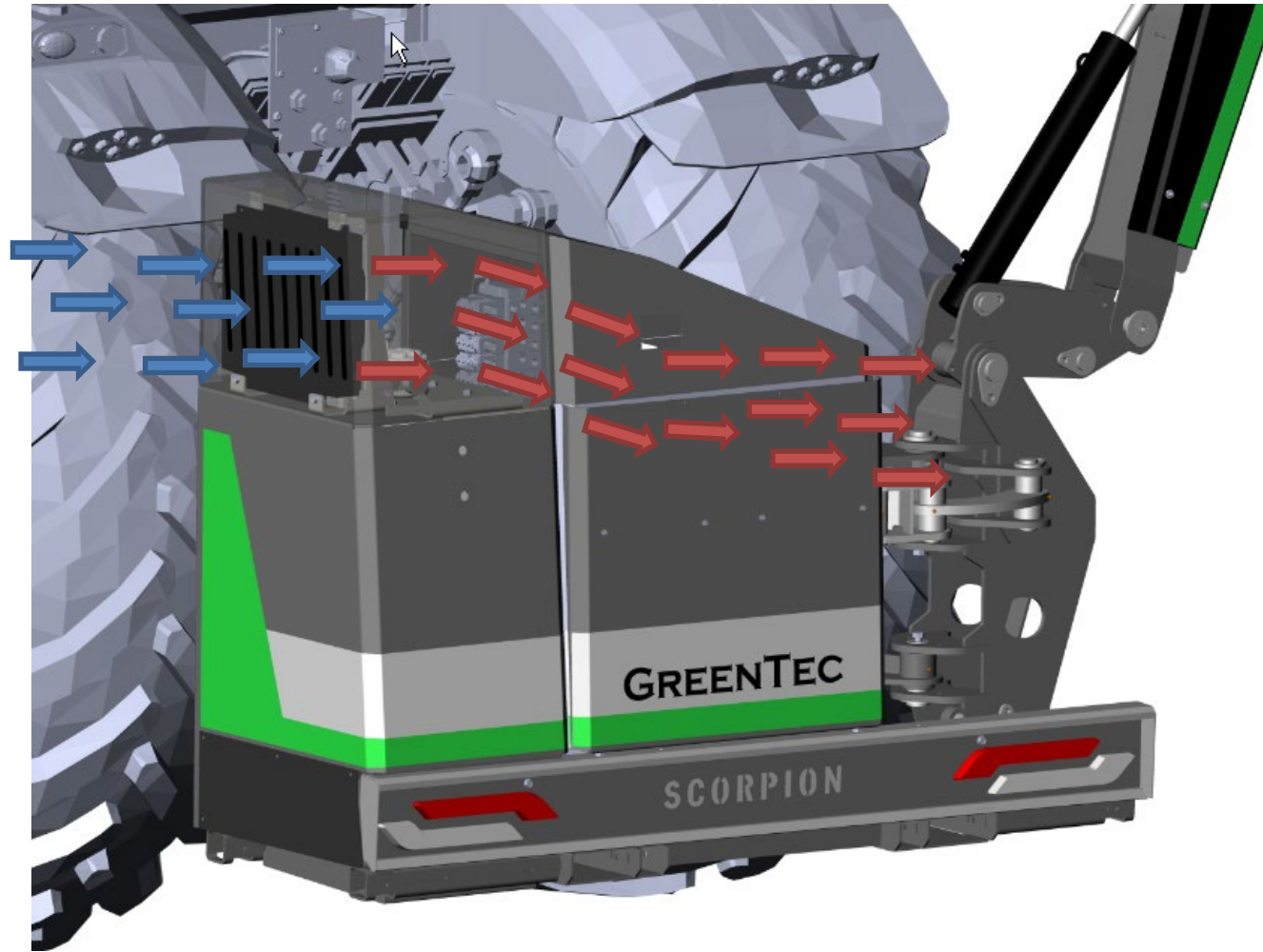
Collision protection
and Hybrid Arm
System (AHS)

PVG valve with
integrated safety

Auto Height
Control valve



EFFICIENCY: Air Stream Control



Cooling system:

- Keeps the oil cooled
- Inlet from left side – Away from the cut-off material
- Fan for cooler turns on and off automatically according to the oil temperature
- Easy access for cleaning

EFFICIENCY: Swivel joint



Swivel joint:

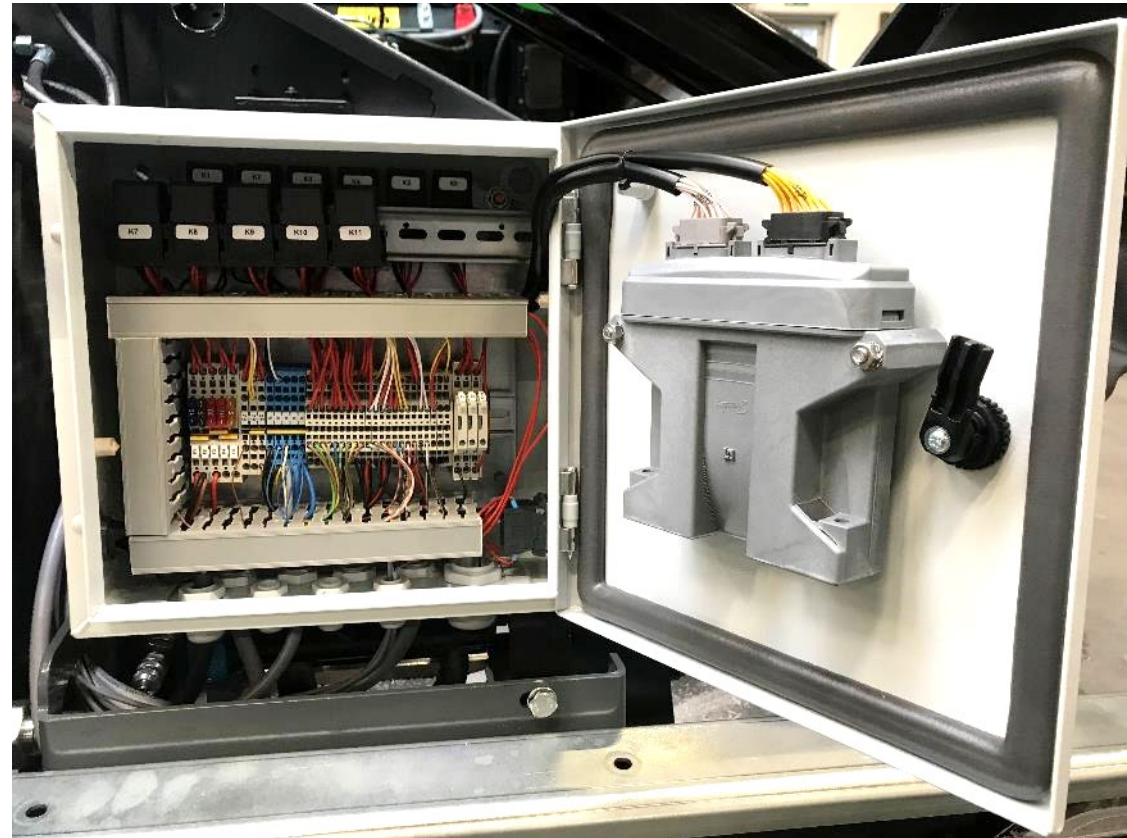
- Copper bushings for long life
- No sharp edges, minimal wear on hydraulic hoses



EFFICIENCY: Canbus wiring harness

Electrical cabinet:

- Waterproof
- Good wiring – Easy overview for troubleshooting
- Danish programmed software



EFFICIENCY: Bio oil

Option

Bio oil:

- SC 6 and 8, 220 l bio oil
- Used bio oil - Shell Naturelle HF-E 46
- Standard oil - Shell Tellus S2 VX 46



EFFICIENCY: Fuel saving



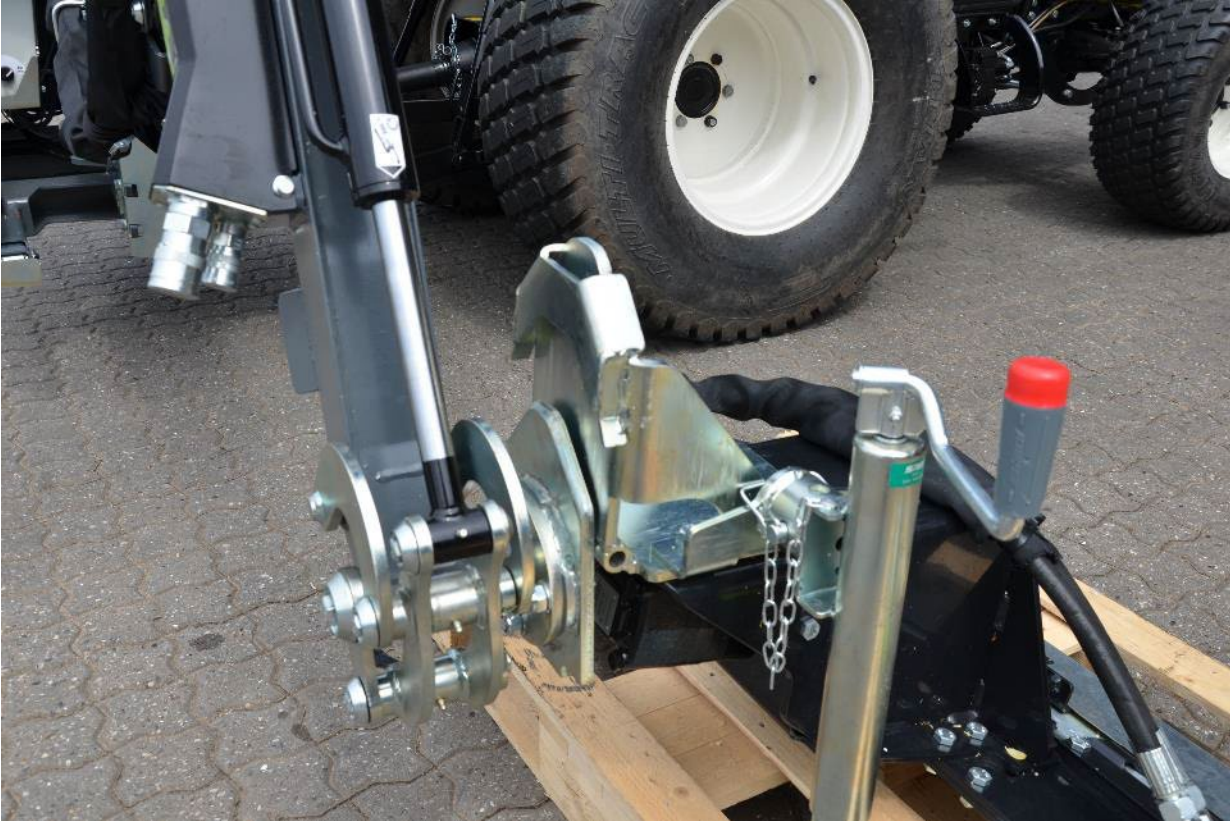
Fuel saving:

- LS pump that angles outward and saves power
- Change of oil flows. Ensure lower engine revolutions on the vehicle so fuel is saved
- Light construction, fewer kilograms to transport



EFFICIENCY: Mechanical quick release

Option



Mechanical quick release:

- Simple quick release system ensures easy change of tools
- Easy mounting and dismounting of tools in collaboration with Rotor Flex

EFFICIENCY: Hydraulic quick release

Option



Hydraulic quick release:

- Flat nose couplings allow high flow and pressure
- Easy to clean with a cloth when mounting
- Quick installation of hydraulics when changing tools



EFFICIENCY: Extra outlet for tool



Option

Extra outlet:

- 2 DW outlet
- Powered by the tractor's own hydraulics
- For operation of belt on flail head
- Oil flow divider ensures correct oil flow
- Cannot be retrofitted



TOOLS:



TOOLS: Leaf Blower LG



Leaf Blower LG:

- Blows cut-off material away from the road
- Nicely fitted and integrated under the machine
- Uses a remote outlet from the tractor's hydraulic system
- Oil flow divider ensures correct oil supply to the blower



TOOLS: Limb trimming

TOOLS	RM 232	LRS 2002	LRS 2402	HX 170	HX 230	HX 270
Working width (m)	2.3	2.0	2.4	1.7	2.3	2.7
Weight (kg)	310	198	239	180	220	260
Max. branch thickness (cm)	Ø4	Ø16	Ø21	Ø11	Ø11	Ø11
Max. driving speed (km/h)	4	5	5	2	2	2
Min. oil flow (l/min./oil pressure)	50/180	50/180	50/180	50/190	50/190	50/190
Alt. oil flow (l/min./oil pressure)	-	85/150	85/150	-	-	-
MOUNTING OPTIONS						
HXF	-	3302		3302		-
SCORPION	6/8	6/8		6/8		



TOOLS: Hedge trimming

TOOLS	RC 162	HS 212	HS 242
Working width (m)	1.6	2.1	2.4
Weight (kg)	200	132	145
Max. branch thickness (cm)	Ø4	Ø6	Ø6
Max. driving speed (km/h)	2.5	5	5
Min. oil flow (l/min./oil pressure)	50/180	50/190	50/190
Alt. oil flow (l/min./oil pressure)	-	-	-
MOUNTING OPTIONS			
HXF	3302	3302	
SCORPION	6/8	6/8	



TOOLS: Grass and brush mowing

TOOLS	FR 122	FR 162	GT 135	GT 155	S 165	S 190	S 210	S 240
Working width (m)	1.2	1.6	1.35	1.55	1.65	1.9	2.1	2.4
Weight (kg)	320	360	410	460	70	82	90	102
Max. branch thickness (cm)	Ø4	Ø4	Ø7	Ø7	-	-	-	-
Max. driving speed (km/h)	5-7	5-7	5	5	3	3	3	3
Min. oil flow (l/min./oil pressure)	85/230 85/315	85/230 85/315	85/280	85/280	34/180	34/180	34/180	34/180
Alt. oil flow (l/min./oil pressure)	-	-	110/300	110/300	-	-	-	-
MOUNTING OPTIONS								
HXF	-	-	-	-	-	-	-	-
SCORPION	6/8		6/8	8 PLUS	4/6/8	6/8		



MAINTENANCE

Daily maintenance:

- Check for cracks, loose parts and dents
- Check for leaks from oil hoses, engine and fittings
- Check oil level on gearbox and hydraulic system
- Lubricating points according to instructions

Periodic maintenance:

- Return and pressure filters are replaced at 50 hours then 500 hours (or once a year)
- Change gearbox oil at 500 hours (or once a year)





FOR GREENTEC PRODUCTS

2 years warranty:

- 1. year:
100% warranty (except wear parts)
- 2. year:
Factory warranty on manufacturing defects



After-Sales Service:

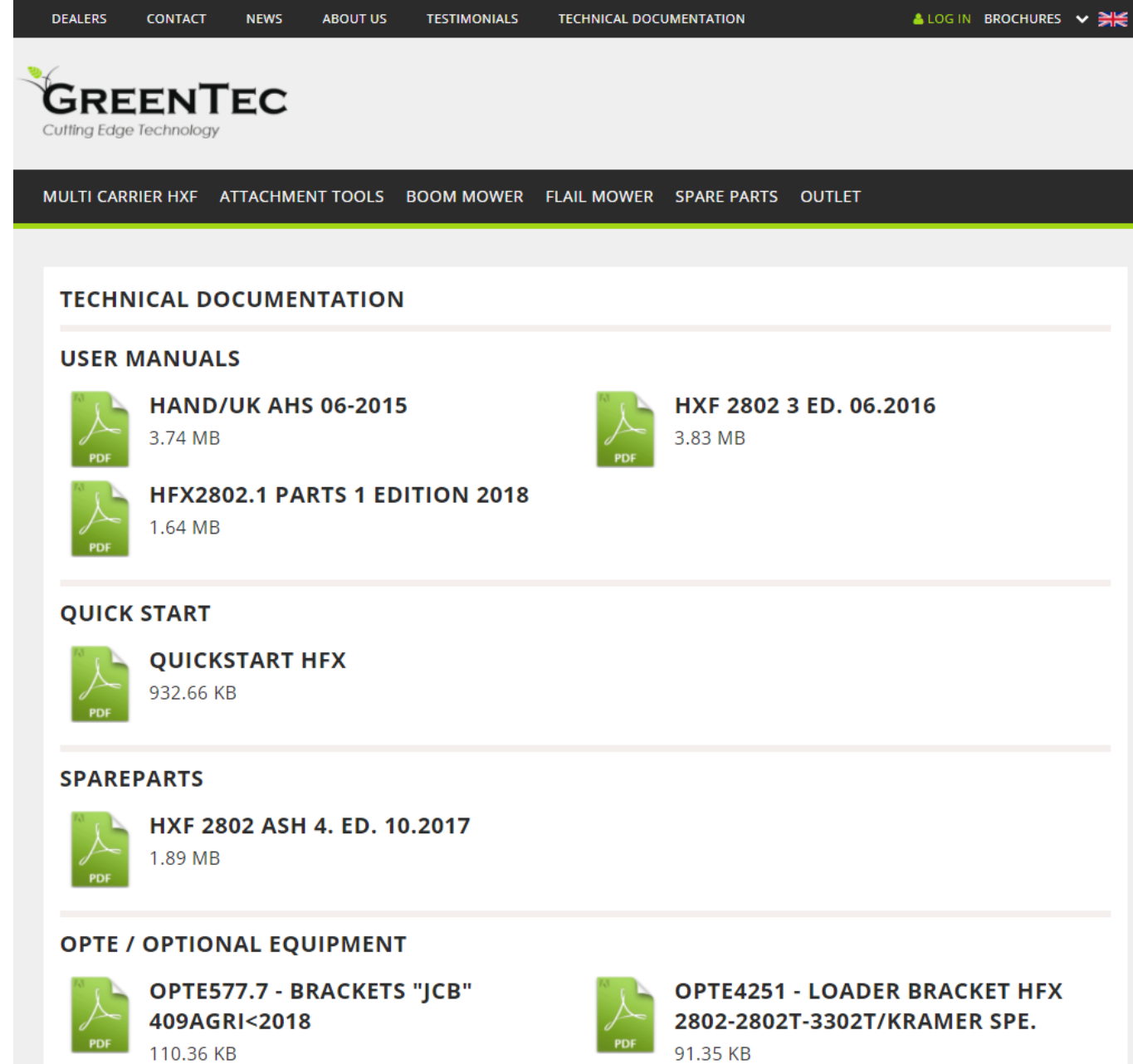
- Phone: +45 76 33 36 90
- E-mail: service@greentec.eu
- Complaint cases are submitted on the extranet:
<https://greentec.eu/en/extranet/complaints/>



WEBSITE

Link to website with technical information.

<https://greentec.eu/en/extranet/spareparts>



The screenshot displays the GreenTec website interface. At the top, a dark navigation bar contains links for DEALERS, CONTACT, NEWS, ABOUT US, TESTIMONIALS, and TECHNICAL DOCUMENTATION. On the right side of this bar are links for LOG IN, BROCHURES, and a language selector (UK flag). Below the navigation bar is the GreenTec logo with the tagline "Cutting Edge Technology". A secondary dark navigation bar lists product categories: MULTI CARRIER HXF, ATTACHMENT TOOLS, BOOM MOWER, FLAIL MOWER, SPARE PARTS, and OUTLET. The main content area is titled "TECHNICAL DOCUMENTATION" and is divided into four sections: "USER MANUALS", "QUICK START", "SPAREPARTS", and "OPTE / OPTIONAL EQUIPMENT". Each section contains links to PDF documents, each represented by a green PDF icon, the document title, and its file size.

Section	Document Title	File Size
USER MANUALS	HAND/UK AHS 06-2015	3.74 MB
	HXF 2802 3 ED. 06.2016	3.83 MB
	HFX2802.1 PARTS 1 EDITION 2018	1.64 MB
QUICK START	QUICKSTART HFX	932.66 KB
SPAREPARTS	HXF 2802 ASH 4. ED. 10.2017	1.89 MB
OPTE / OPTIONAL EQUIPMENT	OPTE577.7 - BRACKETS "JCB" 409AGRI<2018	110.36 KB
	OPTE4251 - LOADER BRACKET HFX 2802-2802T-3302T/KRAMER SPE.	91.35 KB

SPARE PARTS FROM GREENTEC

Spare Parts Department:

- Phone: +45 76 33 36 99
- E-mail: parts@greentec.eu
- Opening hours (CET):
 - Monday to Thursday: 7:30 – 16.00
 - Friday: 7:30 – 15:00



