

ROTARY CRUSHER

RX 133



PARTS

EN

1th Edition 2023

 **GREENTEC**

Cutting Edge Technology



IMPORTANT INFORMATION

GreenTec RX 133

PARTS 1th Edition – 2023

NOTICE: Please ensure that this manual is handed to the operator before using the machine for the first time. If the machine is resold, the Parts list must be given to the new owner!

The information contained in this Parts list is correct at the time of publication. However, in the course of constant development, changes in specification are inevitable. Should you find the information given in this book different to the machine it relates to please contact the “After Sales Department” for advice.



Merkurvej 25
DK 6000 Kolding
Denmark
Tel: +45 75553644
Fax: +45 75554243
Email: info@greentec.eu
web: www.greentec.eu

CONTENTS

CONTENTS	4
INTRODUCTION	5
USEFUL INFORMATION	6
ORDERING PARTS	7
SPARE PARTS	8
RX 133 cpl.....	8
Main frame cpl. ADGT1385	9
Bearing house cpl. ADGT1380.....	11
Front cpl. ADGT1382	12
Bladesystem R/L cpl. OPTE4300/4300.1	13
Chainsystem cpl. OPTE4301	13
Chainmagasin cpl. OPTE4302	14
Stickers	15

INTRODUCTION

Dear customer!

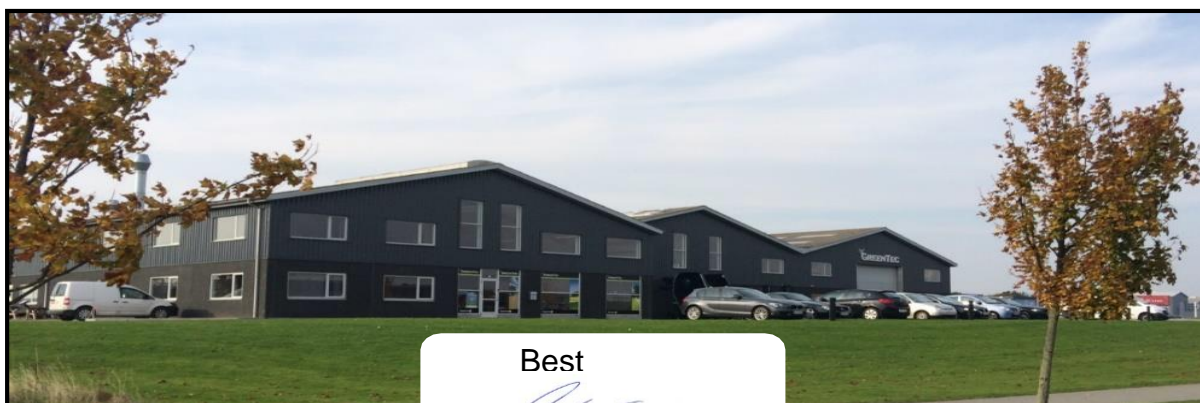
Your new GreenTec machine is constructed with background in more than 20 years' experience with tractor-mounted machines to maintenance of green areas. This machine is produced by the latest technology and recognized safety regulations, standards and regulations.

We want to make a product available in such a way, that neither the use of the machine during transportation or maintenance of the machine causes any damage or misunderstandings.

This parts list contains information that are important and useful for maintaining your GreenTec machine's reliability, dependability and value.

You are welcome to visit our website www.greentec.eu - where the login via the dealer's access gives you the latest updates on instructional and part books on our entire product range.

We hope you will be pleased with your new GreenTec machine.



Best

A handwritten signature in blue ink, appearing to read "John Christensen".

John Christensen
SalesDirector GreenTec

GreenTec's vision is to develop and sell quality machines for the maintenance of green areas, including in agriculture, in industry, at airports and in the local sector. Through innovative product development, we will strive to become a leader in our field.

All machines are developed in a simple and functional design in close cooperation with dealers and end users. It is our goal to cover every need in the market segment with preferably two different solutions. In-depth analysis of requirements and serious advice to the customer is offered the best solution, where individual needs can be met through the modularity of the product program.

Our goal is also to offer the best possible after sales service, and a quick and efficient spare parts supply.

USEFUL INFORMATION

Before using the machine for the first time, it's the seller's responsibility that the buyer is given this parts list. If the machine is resold, the parts list must be transferred to the new owner.

Please fill out the list below to ensure that the necessary information is at hand when ordering spare parts etc.

Serial No

Delivery date

Dealer

Tel/ fax



Merkurvej 25
DK 6000 Kolding
Danmark
Tel: +45 75553644
Fax: +45 75554243
Email: info@greentec.eu
web: www.greentec.eu
Opening hours: Mon-Fri 8-16

ORDERING PARTS

When ordering parts please refer to your parts list to help your dealer with your order.

- **Part number and quantity**
- **Description**
- **Machine model number**
- **Serial number of the machine**
- **Delivery instructions (e.g. next day).**

Delivery is normally via carrier direct to your dealer. Please check with your dealer for stock availability and arrangement of dispatch. Ensure you or your dealer has sufficient cover for parts requirement outside factory hours.

Important Note:

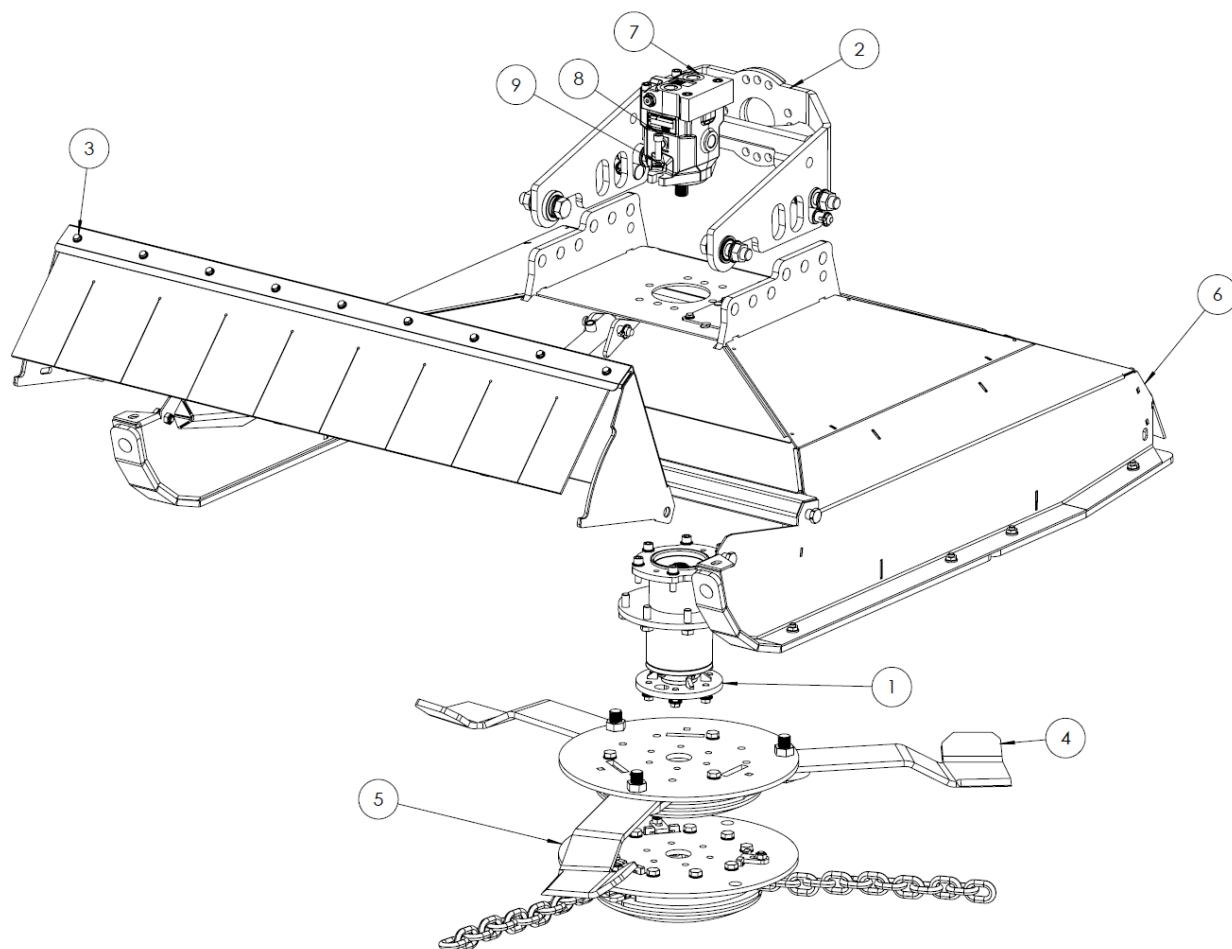
The information contained in this manual is correct at the time of publication. However, in the course of constant development, changes in specification are inevitable. Should you find the information given in this book different to the machine it relates to, please contact the “After Sales Department” for advice.

Key:

LH: Left hand
RH: Right hand

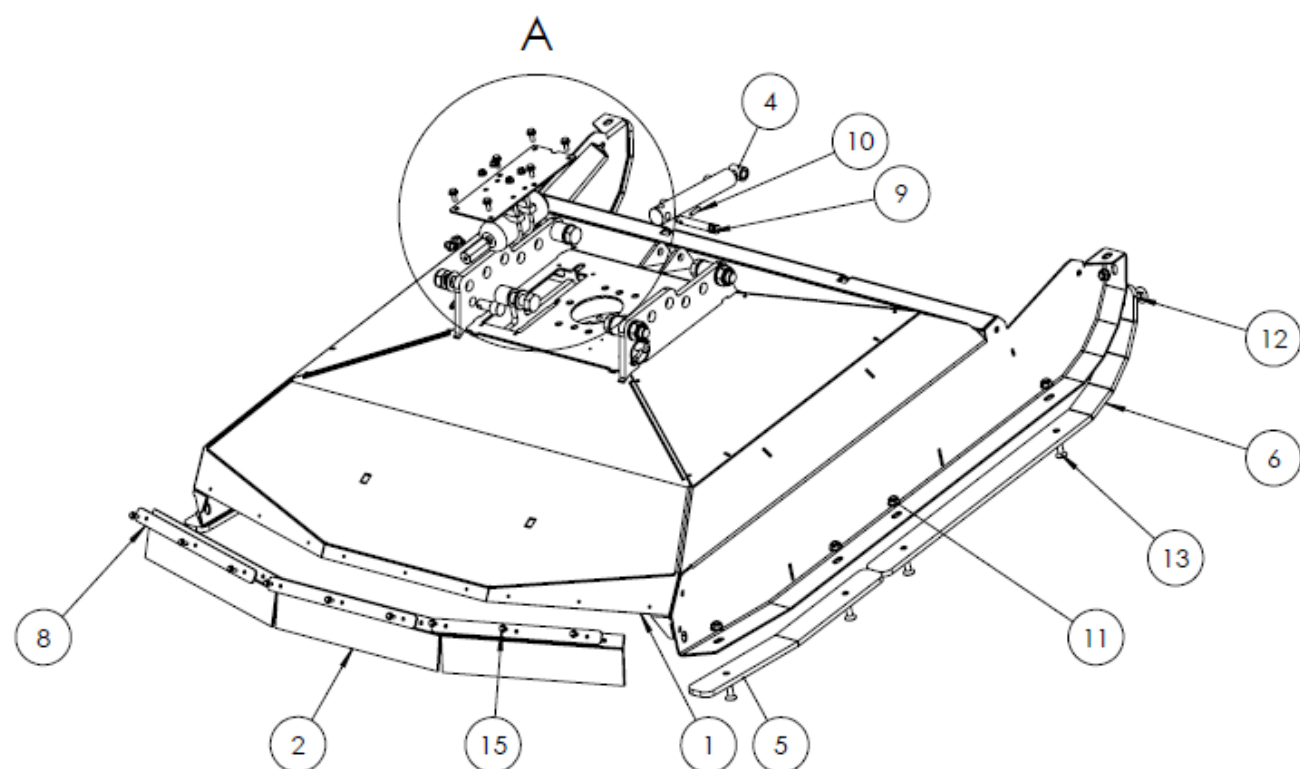
SPARE PARTS

RX 133 cpl.

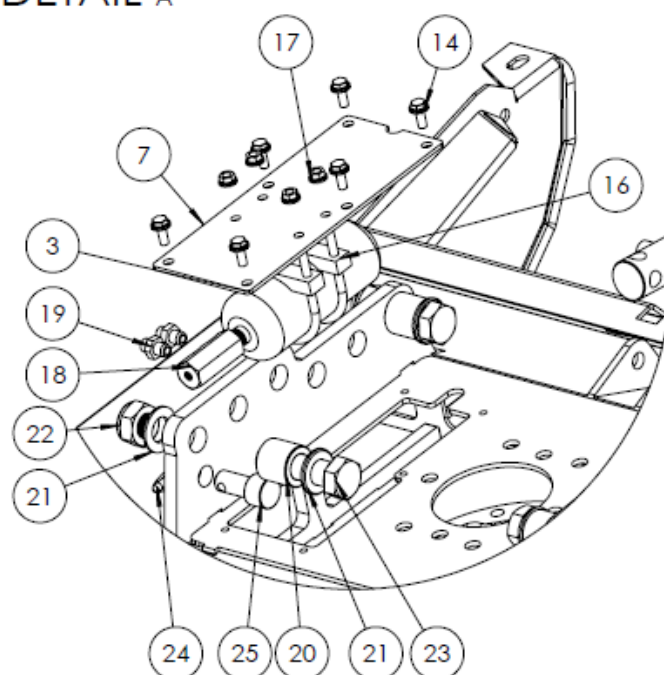


ITEM NO.	PART NUMBER	DESCRIPTION	QTY.
1	ADGT1380	Housing cpl	1
2	6702941	Bracket OPTION	1
3	ADGT1382	Front cover	1
4	ADGT1383	Fixed blades	1
5	ADGT1384	Chain magazine	1
6	ADGT1385	Main frame	1
7	6702730	Hydraulic motor	1
8	6701752	Bolt	2
9	6701641	Washer	2

Main frame cpl. ADGT1385

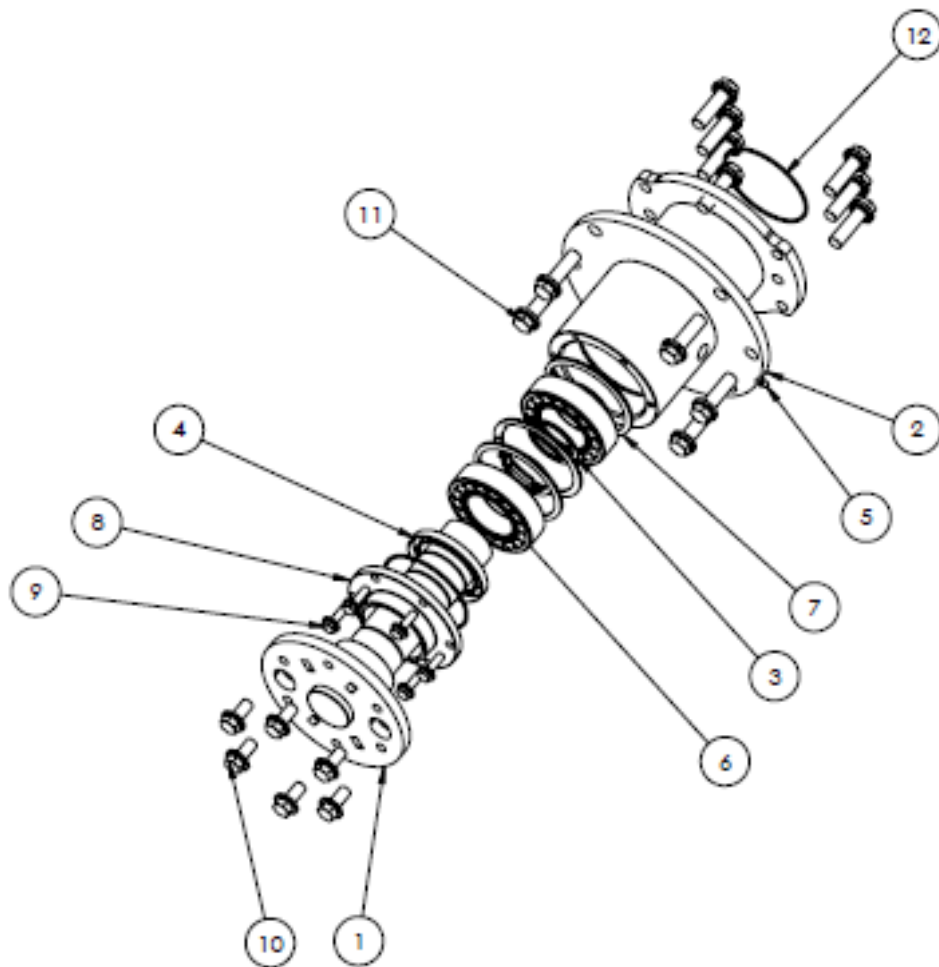


DETAIL A



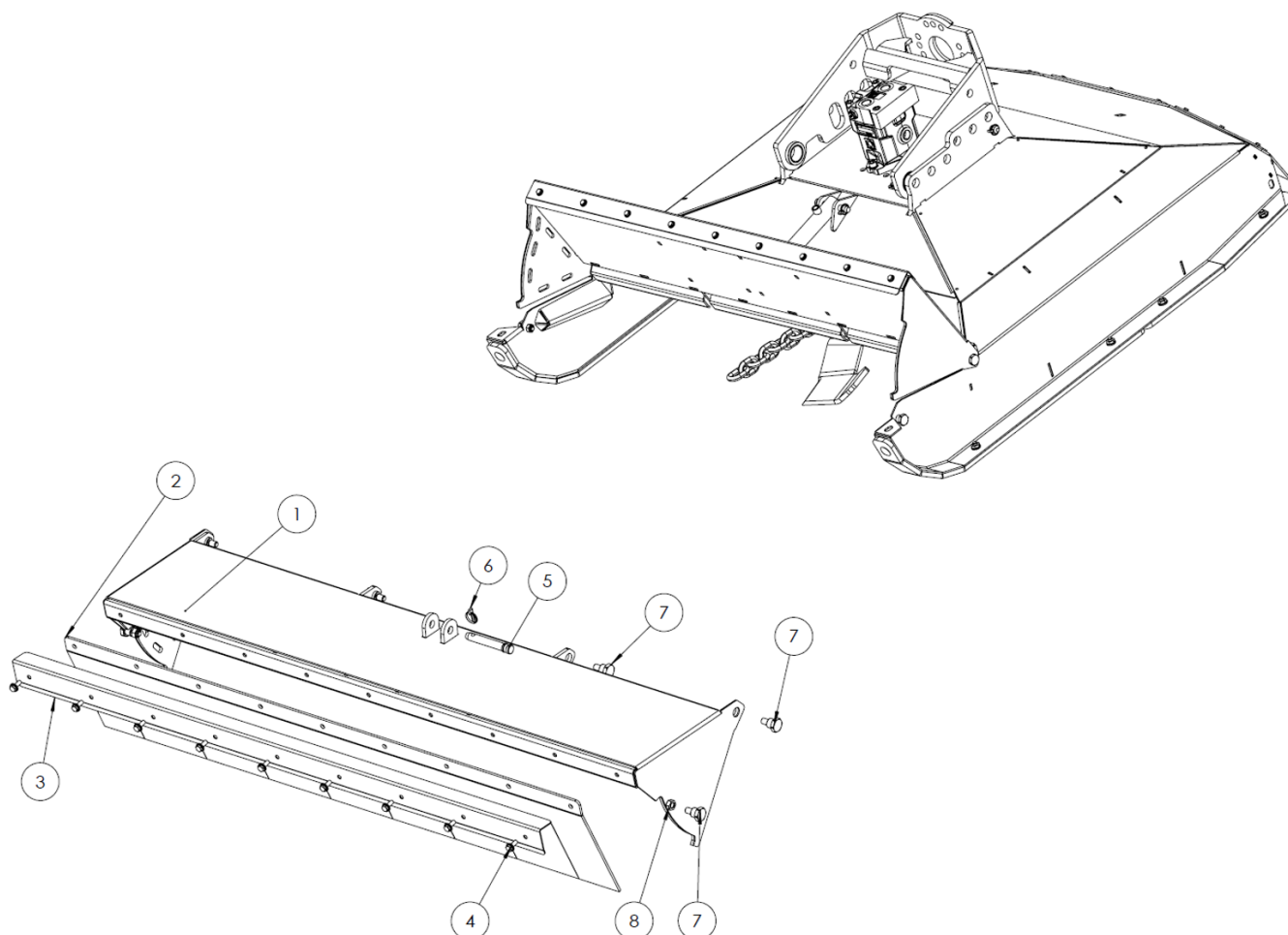
ITEM NO.	PART NUMBER	DESCRIPTION	QTY.
1	6702630	Cover cpl.	1
2	6702721	Rubber back	1
3	6702723	Accumulator	1
4	6701899	Cylinder	1
5	6702634	Skid back	2
6	6702635	Skid front	2
7	6702819	Cover f/accumulator	1
8	6702722	Hinge joint back	3
9	6706001	Toplink bolt	1
10	6702873	Split	1
11	6701984	Flangenut	10
12	6702953	Bolt	2
13	9040223	Bolt	8
14	6702613	Flangebolt	6
15	8222020	Flangebolt	9
16	6702879	Clamp	2
17	6702627	Flangenut	4
18	6702878	Accumulator nipple	1
19	6701748	Nipple	2
20	6702651	Pully	4
21	6701607	Washer	8
22	6701558	Nut	4
23	6701746	Bolt	4
24	6702880	Split	2
25	6702818	Pully lock	2

Bearing house cpl. ADGT1380



ITEM NO.	PART NUMBER	DESCRIPTION	QTY.
1	6702638	Main axle	1
2	6702636	Bearing house	1
3	9040228	Lock ring	3
4	9030098	Sealing ring	1
5	8222027	Greasenipple	1
6	9030101	Bearing	2
7	9040225	Lock ring	3
8	6702823	End cover	1
9	6702614	Flangebolt	6
10	6702618	Flangebolt	6
11	6702877	Bolt	14
12	9030100	O-ring	2

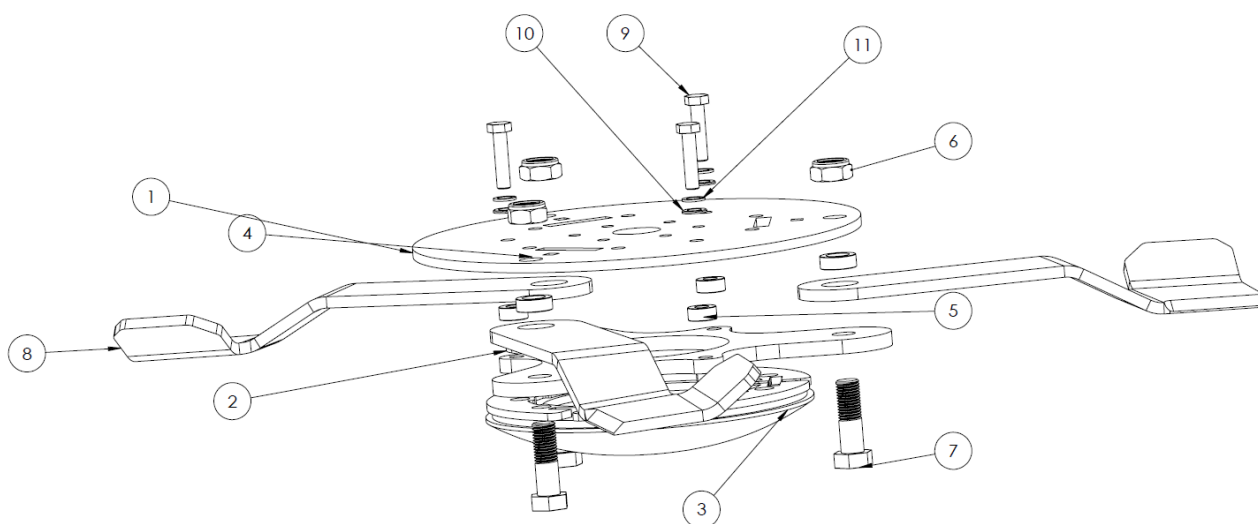
Front cpl. ADGT1382



ITEM NO.	PART NUMBER	DESCRIPTION	QTY.
1	6702631	Front cover	1
2	6702720	Rubber f/front cover	1
3	6702637	Hinge joint front	1
4	6702613	Flangebolt	9
5	6706001	Toplink Bolt	1
6	6702873	Split	1
7	6702817	Hinge	6
8	8362005	Nut	4

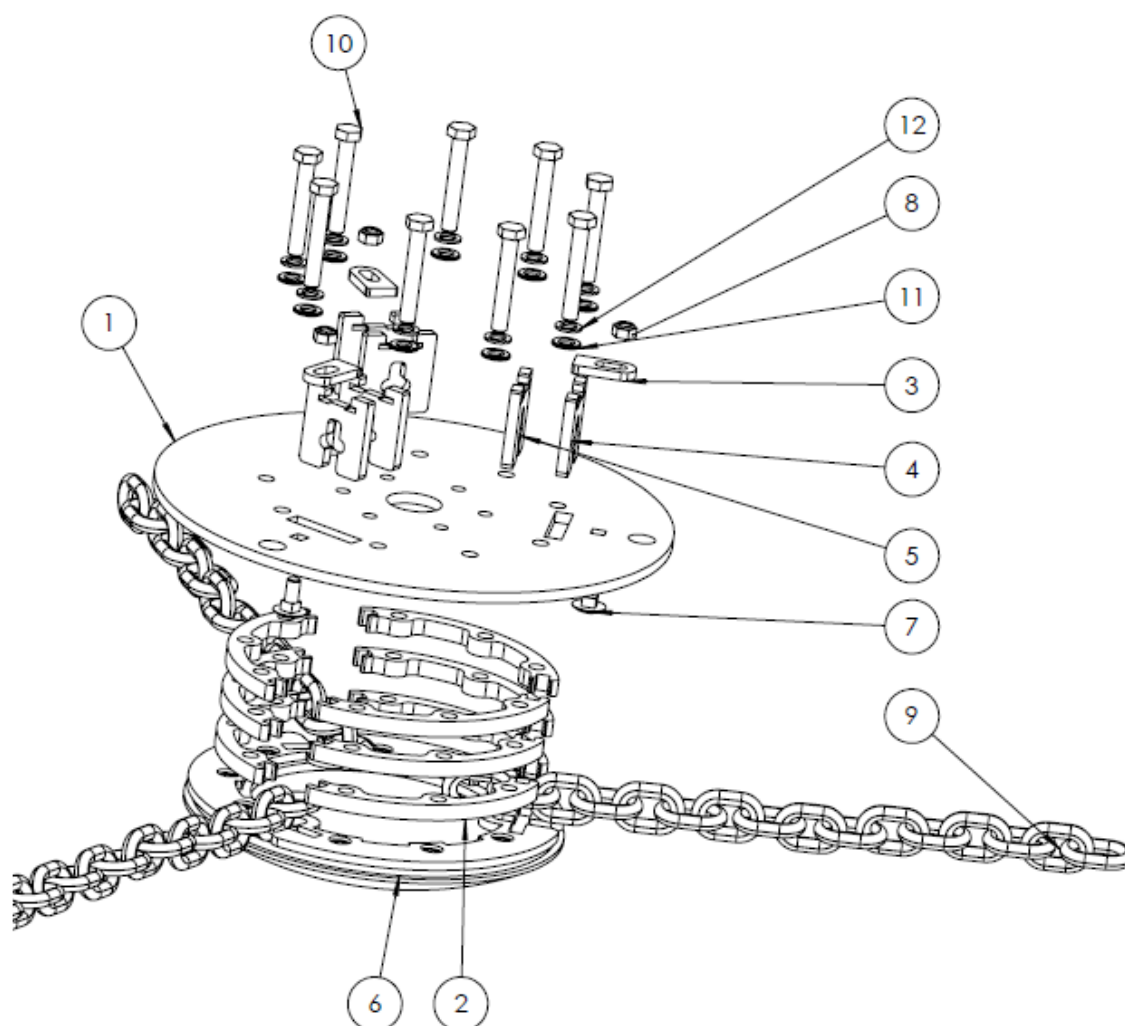
Bladesystem R/L cpl. OPTE4300/4300.1

Chainsystem cpl. OPTE4301



ITEM NO.	PART NUMBER	DESCRIPTION	QTY.
1	6702639	Blade carrier over	1
2	6702652	Blade carrier under	1
3	6702658	Plate	1
4	8827601	Bushing	3
5	6702653	Bolt	3
6	6701558	Nut	3
7	2770413	Bolt	3
8	8827001/8827001.1	Blade R/L	3
8a	8827002	Chain 13 mm	3
9	6702821	Bolt	3
10	8222009	Washer	3
11	8222008	Washer	3

Chainmagasin cpl. OPTE4302



ITEM NO.	PART NUMBER	DESCRIPTION	QTY.
1	6702639	Blade carrier over	1
2	6702657	Distance	9
3	6702655	Lock plate	3
4	6702656	Fork 13mm	3
6	6702658	Blade carrier under	1
7	9040224	Bolt	3
8	8362005	Lock nut	3
9	6702857	Chain 13mm	3
10	6702822	Bolt	9
11	8222009	Washer	9
12	8222008	Washer	9

Stickers



RX133 KITS
162728

NO.	PART NUMBER	DESCRIPTION	QTY.
1	RX 133 Kits	Stickers kits RX 133 cpl.	1
NS	6701685	Strenx label	1



Merkurvej 25 | DK-6000 Kolding | Tel.: +45 75 55 36 44 | info@GreenTec.eu | www.GreenTec.eu

Cutting Edge Technology