

MULTI CARRIER

PUMA 2303



PARTS

EN

1th Edition 2023

 **GREENTEC**

Cutting Edge Technology



IMPORTANT INFORMATION

GreenTec Puma 2303 S & P

PARTS 1thEdition – 2023

NOTICE: Please ensure that this manual is handed to the operator before using the machine for the first time. If the machine is resold, the Parts list must be given to the new owner!

The information contained in this Parts list is correct at the time of publication. However, in the course of constant development, changes in specification are inevitable. Should you find the information given in this book different to the machine it relates to please contact the “After Sales Department” for advice.



CONTENTS

CONTENTS	4
INTRODUCTION	5
USEFUL INFORMATION	6
ORDERING PARTS	7
SPARE PARTS	8
Puma 2303 S & P cpl.	8
Main frame cpl. Puma 2303 S & P ADGT1420	9
Arm Puma cpl. 2303 S ADGT1427 + OPTE 1311 or 1312.....	10
Arm Puma cpl. 2303 P (incl adgt1425) ADGT1421	11
Cylinder Puma 2303 S (Option 1311) & P (Incl in arm) ADGT1425	12
Toplink Puma 2303 S (Option 1312)	12
Head bracket cpl. Puma 2303 S & P ADGT1422	13
Break back cpl. Puma 2303 S & P ADGT1423	14
Flowdivider cpl. Puma 2303 S ADGT1426	15
EI-Valve cpl. Puma 2303 P ADGT1424.....	16
Counterweight OPTE4293 Option	18
Stickers	19

INTRODUCTION

Dear customer!

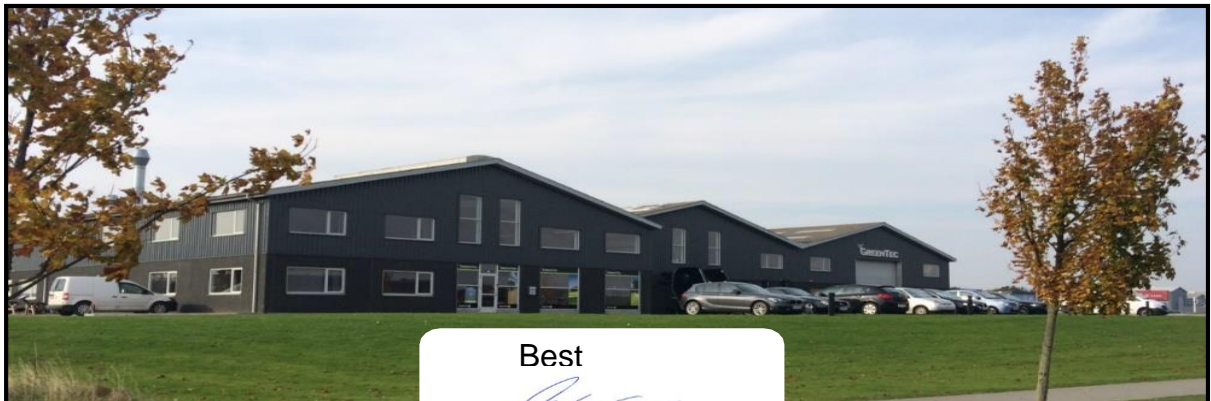
Your new GreenTec machine is constructed with background in more than 20 years' experience with tractor-mounted machines to maintenance of green areas. This machine is produced by the latest technology and recognized safety regulations, standards and regulations.

We want to make a product available in such a way, that neither the use of the machine during transportation or maintenance of the machine causes any damage or misunderstandings.

This parts list contains information that are important and useful for maintaining your GreenTec machine's reliability, dependability and value.

You are welcome to visit our website www.greentec.eu - where the login via the dealer's access gives you the latest updates on instructional and part books on our entire product range.

We hope you will be pleased with your new GreenTec machine.



Best

A handwritten signature in blue ink, appearing to read "John Christensen".

John Christensen
SalesDirector GreenTec

GreenTec's vision is to develop and sell quality machines for the maintenance of green areas, including in agriculture, in industry, at airports and in the local sector. Through innovative product development, we will strive to become a leader in our field.

All machines are developed in a simple and functional design in close cooperation with dealers and end users. It is our goal to cover every need in the market segment with preferably two different solutions. In-depth analysis of requirements and serious advice to the customer is offered the best solution, where individual needs can be met through the modularity of the product program.

Our goal is also to offer the best possible after sales service, and a quick and efficient spare parts supply.

USEFUL INFORMATION

Before using the machine for the first time, it's the seller's responsibility that the buyer is given this parts list. If the machine is resold, the parts list must be transferred to the new owner.

Please fill out the list below to ensure that the necessary information is at hand when ordering spare parts etc.

Serial No	<input type="text"/>
Delivery date	<input type="text"/>
Dealer	<input type="text"/>
	<input type="text"/>
	<input type="text"/>
Tel/ fax	<input type="text"/>



Merkurvej 25
DK 6000 Kolding
Danmark
Tel: +45 75553644
Fax: +45 75554243
Email: info@greentec.eu
web: www.greentec.eu
Opening hours: Mon-Fri 8-16

ORDERING PARTS

When ordering parts please refer to your parts list to help your dealer with your order.

- Part number and quantity
- Description
- Machine model number
- Serial number of the machine
- Delivery instructions (e.g. next day).

Delivery is normally via carrier direct to your dealer. Please check with your dealer for stock availability and arrangement of dispatch. Ensure you or your dealer has sufficient cover for parts requirement outside factory hours.

Important Note:

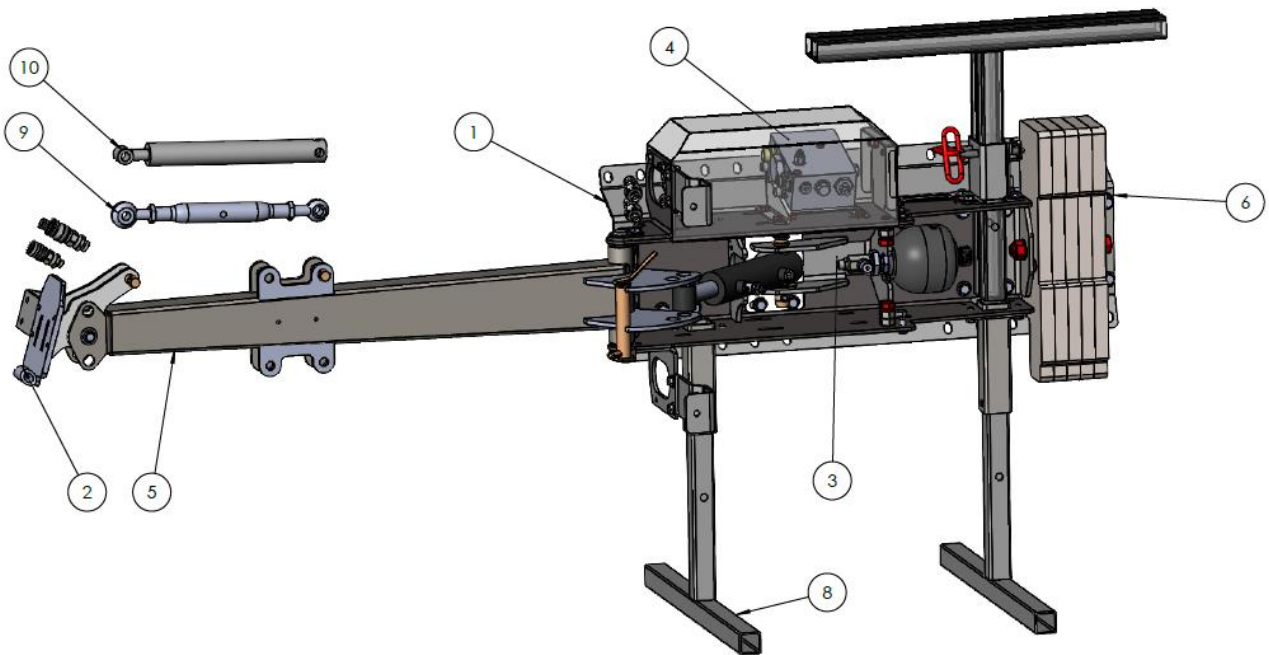
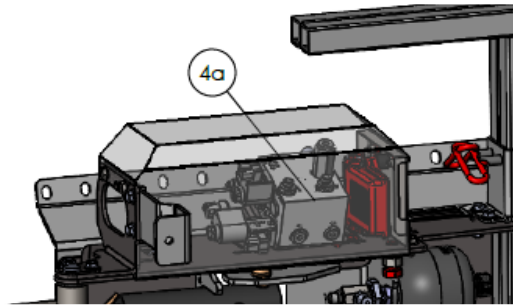
The information contained in this manual is correct at the time of publication. However, in the course of constant development, changes in specification are inevitable. Should you find the information given in this book different to the machine it relates to, please contact the "After Sales Department" for advice.

Key:

LH: Left hand
RH: Right hand

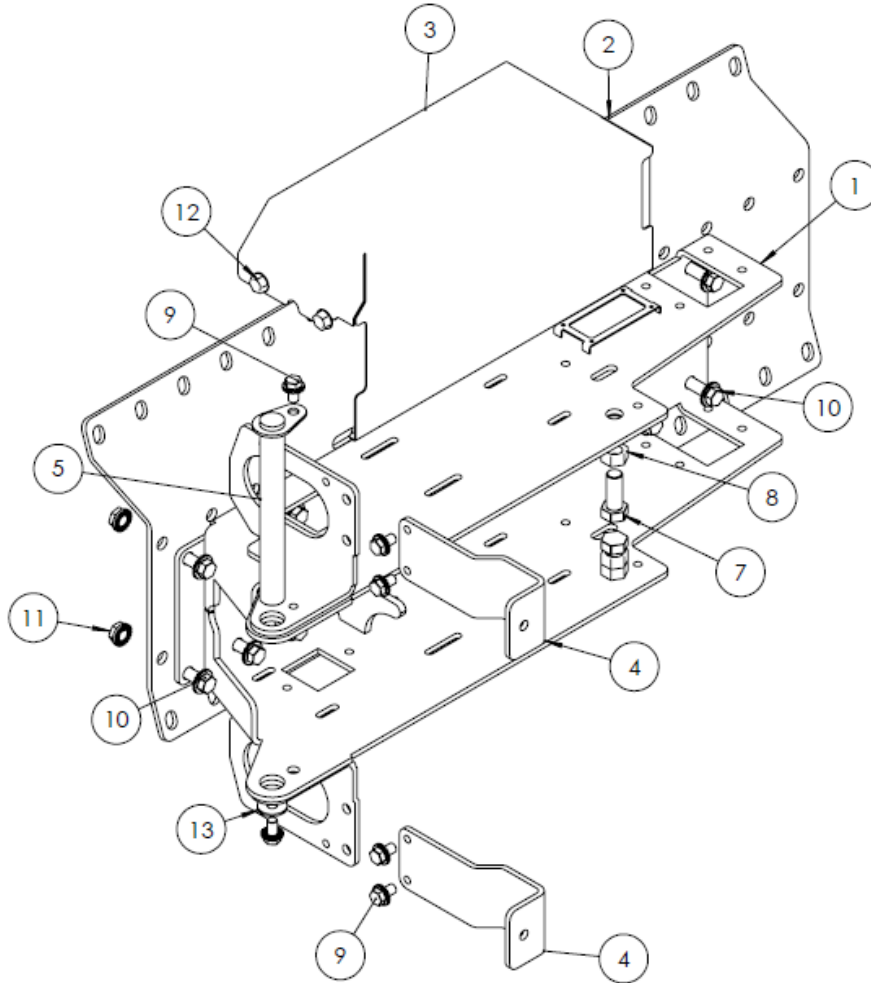
SPARE PARTS

Puma 2303 S & P cpl.



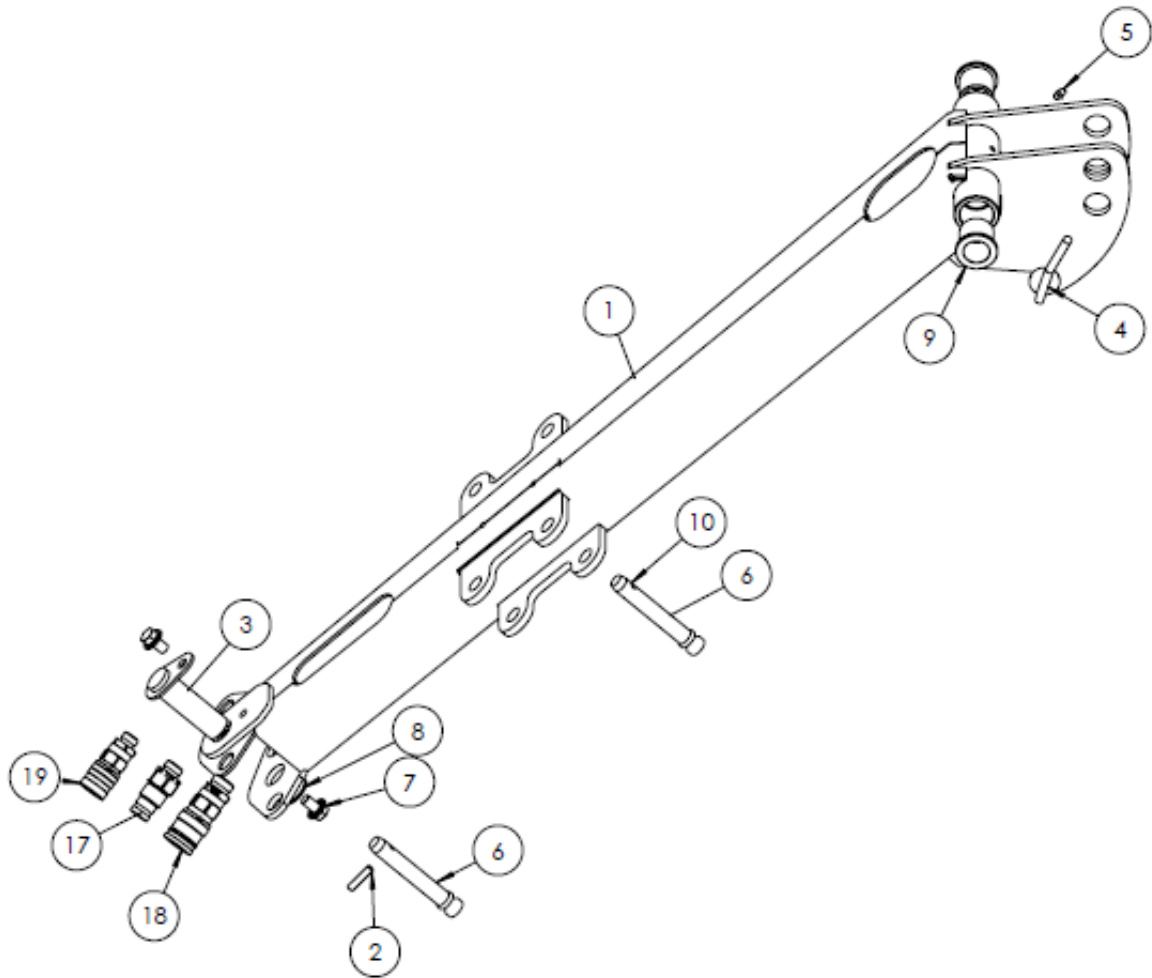
ITEM NO.	PART NUMBER	DESCRIPTION	QTY.
1	ADGT1420	Main frame cpl.	1
2	ADGT1422	Head bracket cpl.	1
3	ADGT1423	Break back and accumulator	1
4	ADGT1426	Flowdivider Puma 2303 S	1
4a	ADGT1424	Valve Puma 2303 P	1
5	ADGT1427	Arm Puma 2303 S	1
5a	ADGT1421	Arm cpl. Puma 2303 P	
6	OPTE4293	Counterweigh Option	1
8	OPTE4295	Supportlegs Option incl. Adapter RI/BR	1
9	OPTE1311	Cutting angle mechanical Puma 2303S	1
10	OPTE1312	Cutting angle hydraulic Puma 2303S Option Puma 2303 P included	1

Main frame cpl. Puma 2303 S & P ADGT1420



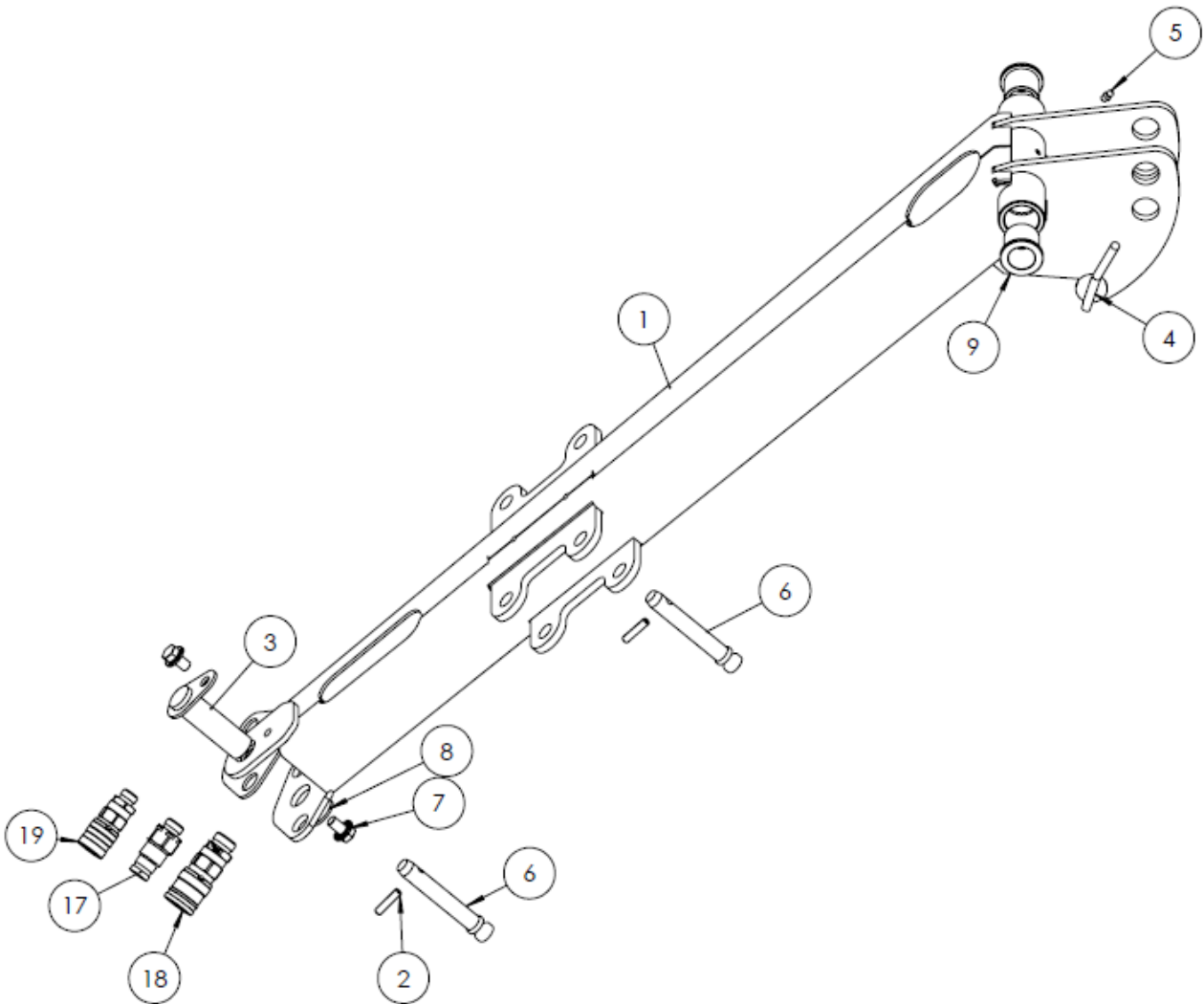
TEM NO.	PART NUMBER	DESCRIPTION	QTY.
1	6702831	Main frame	1
2	6702832	Plate f/frame	1
3	6702833	Cover R	1
4	6702834	Supportlegs	2
5	6702842	Pin f/arm	1
6	6702869	Cover L	1
7	9040185	Nut	2
8	2770449	Nut	2
9	6702616	Flangebolt	6
10	6702942	Flangebolt	10
11	6702619	Flangenut	10
12	8222035	Bolt	6
13	200144.0	Washer	1

Arm Puma cpl. 2303 S ADGT1427 + OPTE 1311 or 1312



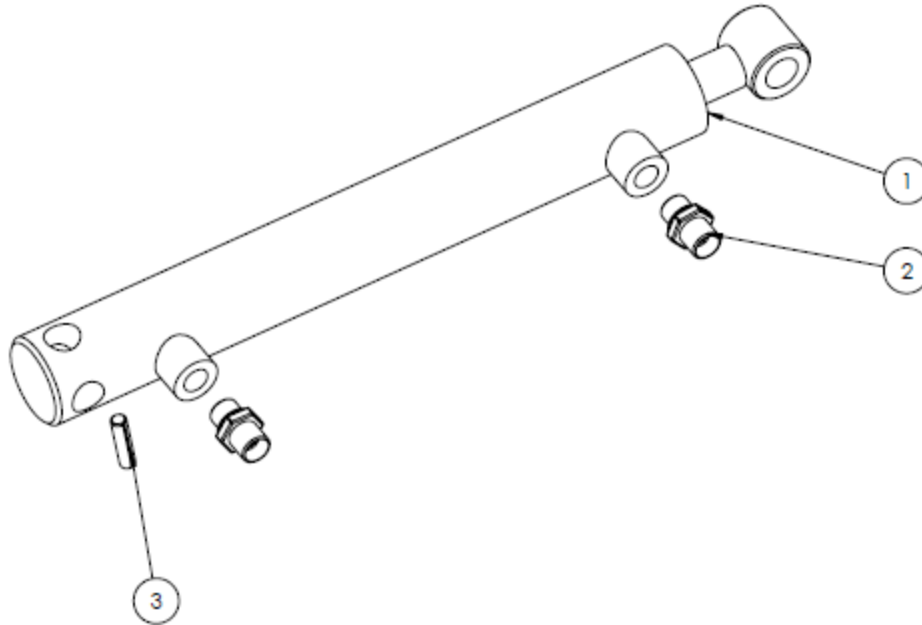
ITEM NO.	PART NUMBER	DESCRIPTION	QTY.
1	6702876	Arm	1
2	6702873	Dowel Pin	1
3	6702843	Pin Bolt with handler and lynch pin	1
4	6706003	Toplinkbolt with handler	1
5	8222027	Greasenipple	1
6	6706001	Toplinkbolt	2
7	6702616	Flangebolt	2
8	200144.0	Washer	1
9	6704001	Bushing	2
10	6702650	Split	1
17	6702974	Nipple f/pressure	1
18	6701616	Nipple f/tank	1
19	6702975	Nippel f/drain	1

Arm Puma cpl. 2303 P (incl adgt1425) ADGT1421



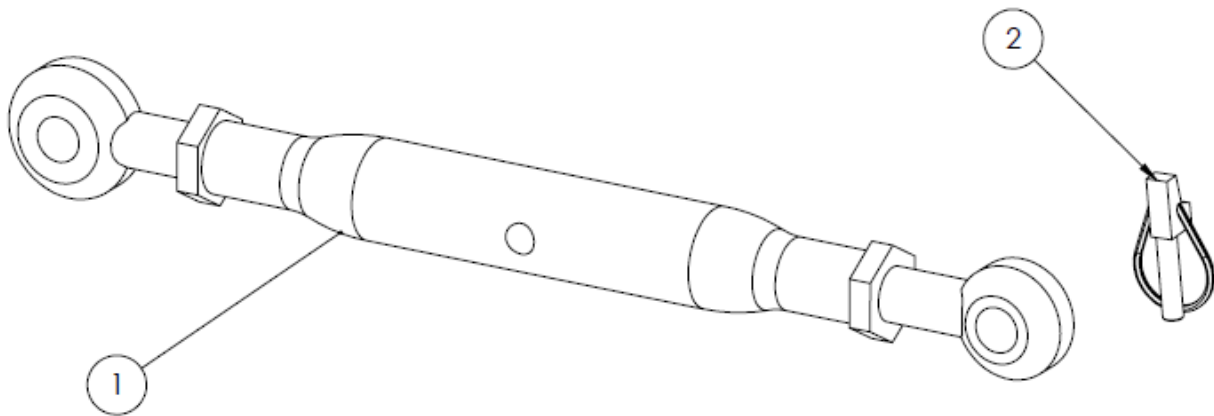
ITEM NO.	PART NUMBER	DESCRIPTION	QTY.
1	6702876	Arm	1
2	6702873	Dowel Pin	2
3	6702843	Pin Bolt with handler and lynch pin	1
4	6706003	Toplinkbolt with handler	1
5	8222027	Greasenipple	1
6	6706001	Toplinkbolt	2
7	6702616	Flangebolt	2
8	200144.0	Washer	1
9	6704001	Bushing	2
17	6702974	Nipple f/pressure	1
18	6701616	Nipple f/tank	1
19	6702975	Nippel f/drain	1

Cylinder Puma 2303 S (Option 1311) & P (Incl in arm) ADGT1425



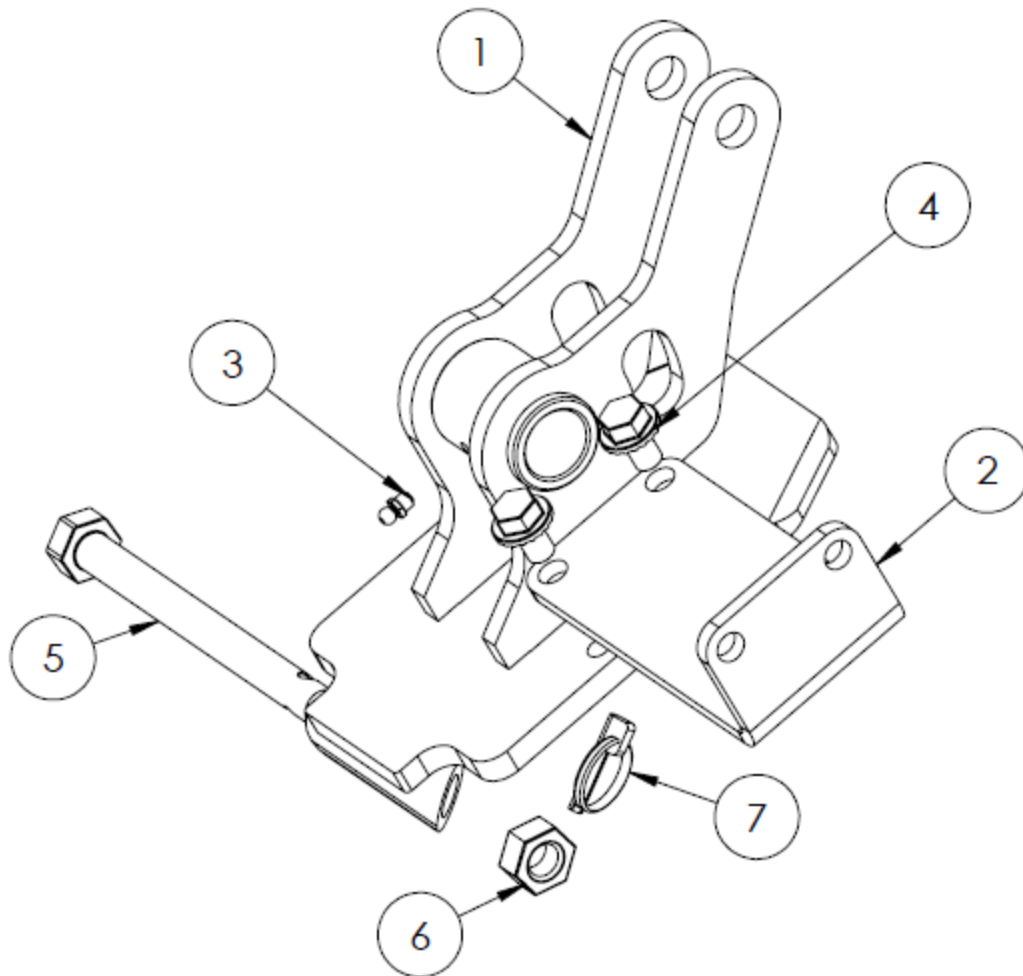
TEM NO.	PART NUMBER	DESCRIPTION	QTY.
1	6703001	Cylinder	1
2	6702829	Nipple	2
3	6702873	Dowel pin	1

Toplink Puma 2303 S (Option 1312)



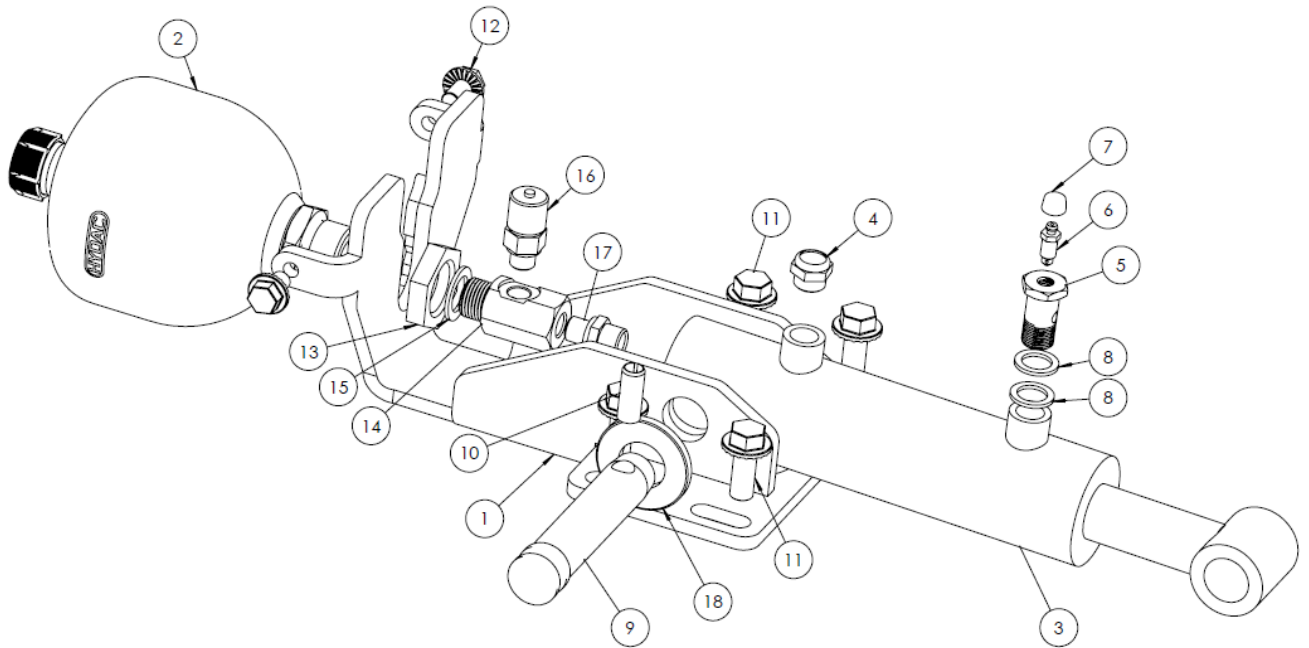
TEM NO.	PART NUMBER	DESCRIPTION	QTY.
1	6706002	Toplink	1
2	6702950	Split	1

Head bracket cpl. Puma 2303 S & P ADGT1422



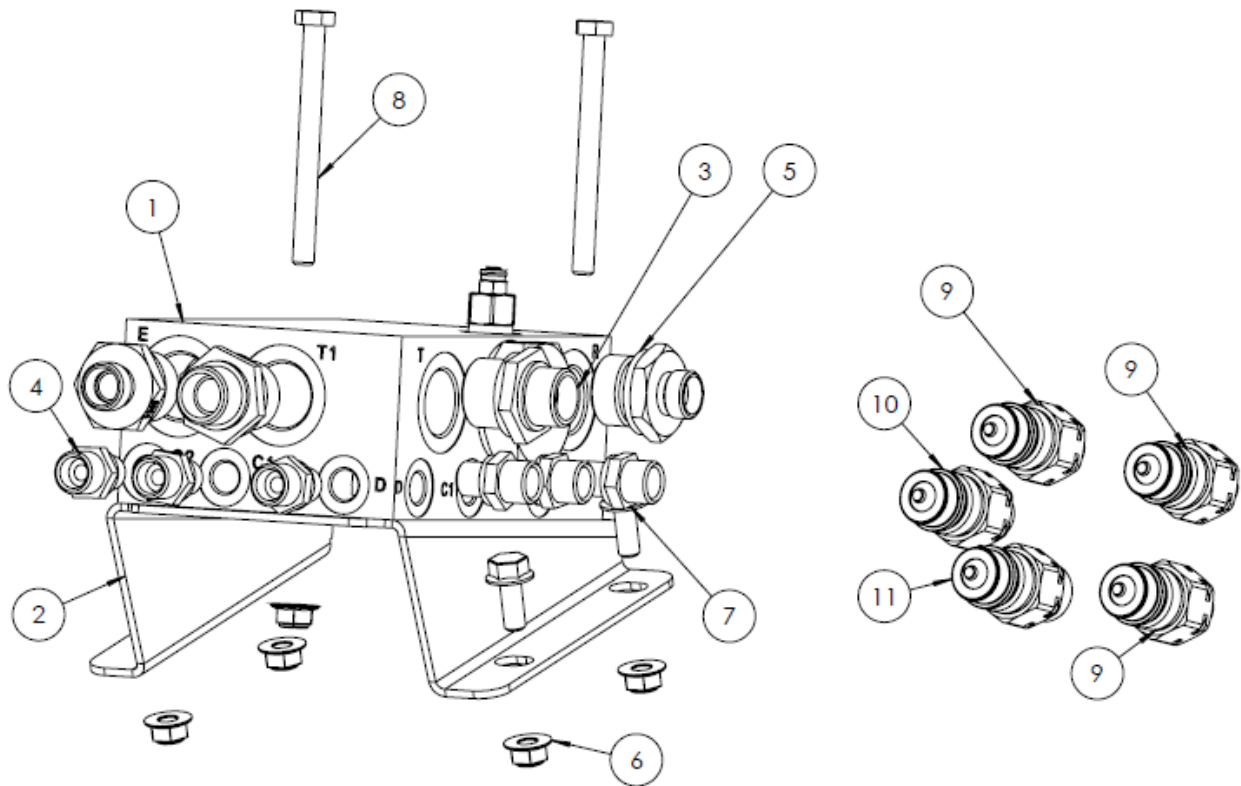
ITEM NO.	PART NUMBER	DESCRIPTION	QTY.
1	6702839	Head crowd bracket	1
2	6702841	Supportleg f/arm	1
3	8222027	Greasenipple	1
4	6702616	Flangebolt	2
5	6701511	Bolt	1
6	6702004	Nut	1
7	6706005	Split	1

Break back cpl. Puma 2303 S & P ADGT1423



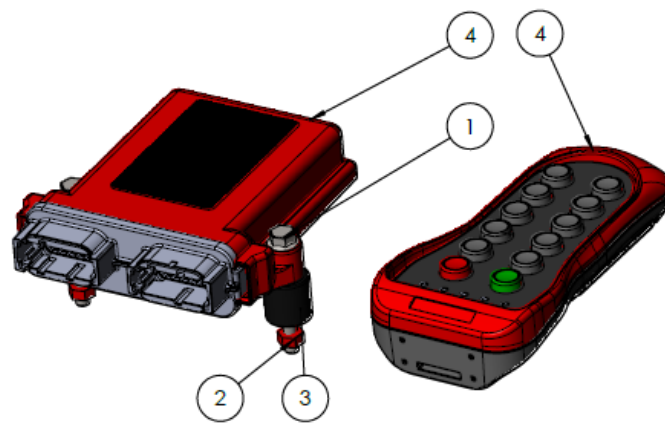
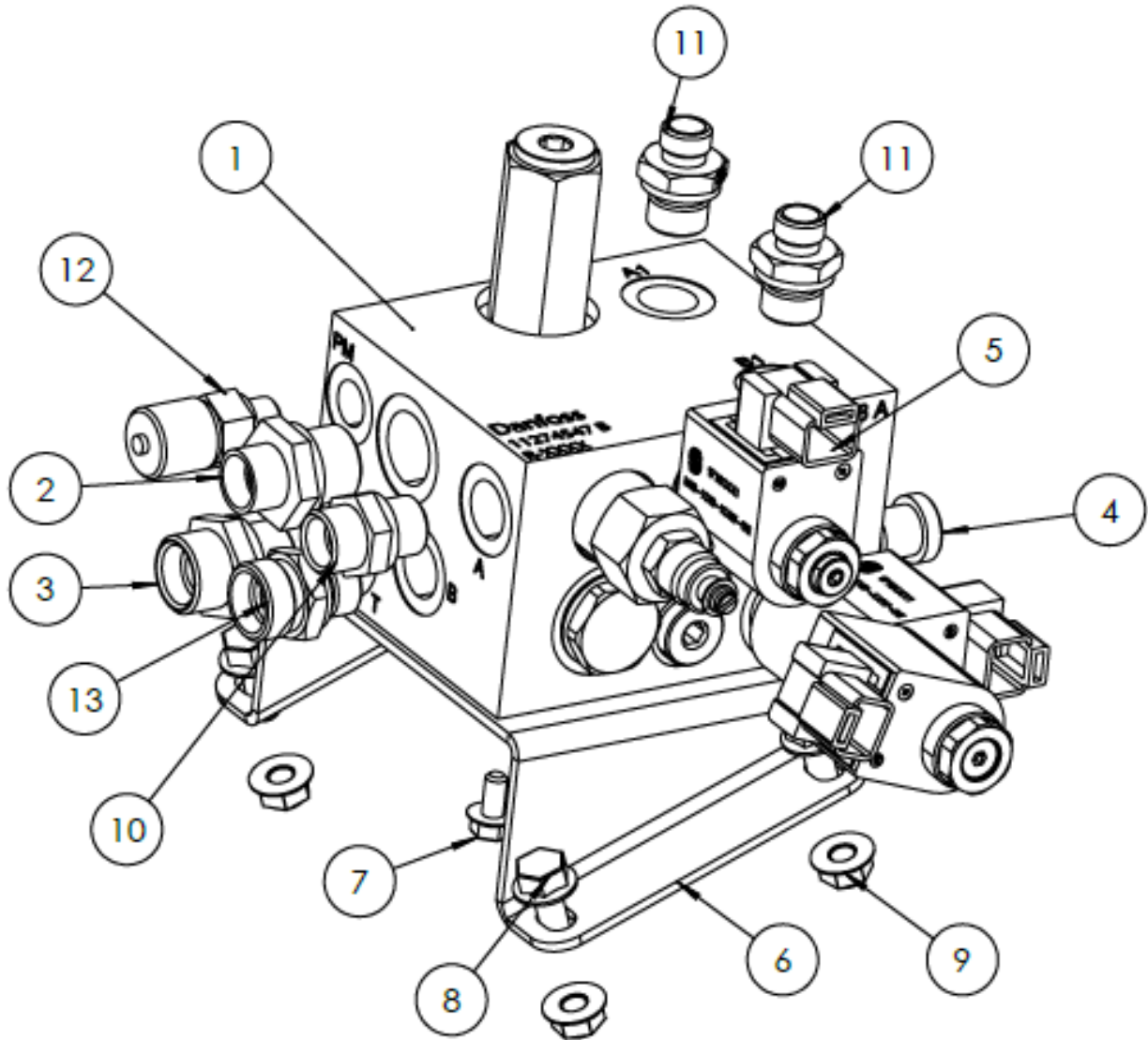
ITEM NO.	PART NUMBER	DESCRIPTION	QTY.
1	6702835	Bracket	1
2	6703005	Accumulator	1
3	6702004	Cylinder	1
4	6703013	Plug	1
5	8290024	Banjo bolt	1
6	8290023	Breather	1
7	8290025	Cover for breather	1
8	6703003	Seals	2
9	6706006	Toplink bolt	1
10	6701549	Dowel pin	1
11	6702942	Flangebolt	4
12	6702616	Flangebolt	2
13	6702005	Conranut	1
14	8290022	Accumulator nipple	1
15	6703010	Seal	1
16	6703007	Mini-mesh	1
17	9040118	Nipple	1
18	2770552	Washer	1

Flowdivider cpl. Puma 2303 S ADGT1426



ITEM NO.	PART NUMBER	DESCRIPTION	QTY.
1	6703014-25	Flowdivider	1
2	6701002	Valvebracket	1
3	6702240	Nipple	4
4	9040118	Nipple	4
5	6702241	Nipple	2
6	9040190	Nut	6
7	6702001	Flangebolt	4
8	931080852	Bolt	2
9	6702980	Nipple	3
10	6702981	Nipple	1
11	6702982	Nipple	1

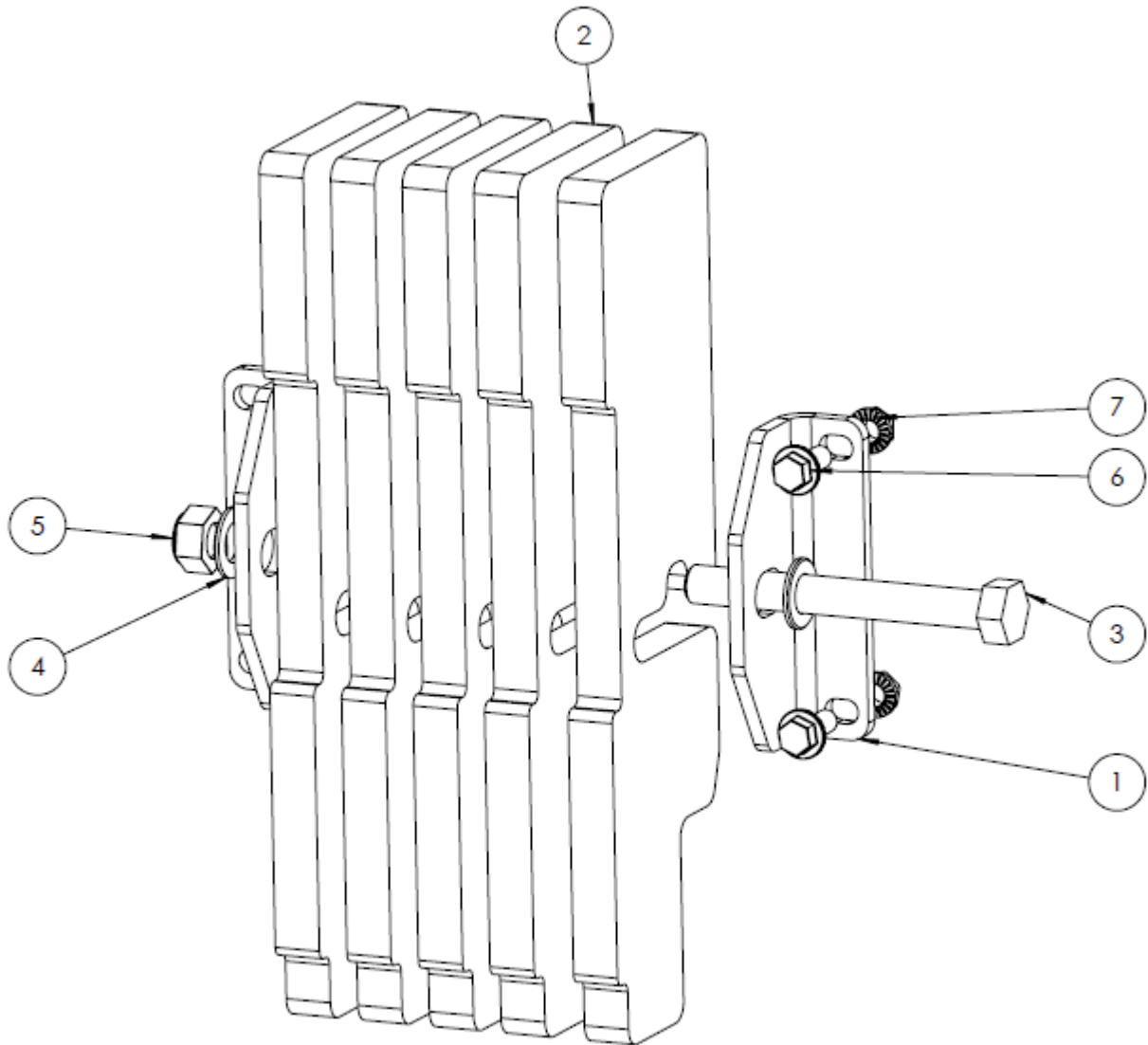
El-Valve cpl. Puma 2303 P ADGT1424



ITEM NO.	PART NUMBER	DESCRIPTION	QTY.
1	6702874-25	El-Valve	1
2	9040119	Nipple	2
3	9040116	Nipple	1
4	6701988	Plug	1
5	81823025	Plug	1
6	6702654	Bracket	1
7	6702141	Flangebolt	2
8	6702001	Flangebolt	4
9	9040190	Nut	4
10	9040117	Nipple	1
11	6702972	Nipple	2
12	6703007	Mini-mesh	1
13	9040221	Nipple	1
NS	6702203	Cable tree	1

ITEM NO.	PART NUMBER	DESCRIPTION	QTY.
1	9040206	Bolt	2
NS	8482004	Washer	2
NS	6702007	Washer	2
2	8752002	Nut	2
3	6702756	Vibration absorber	2
4	6702086	Remote control and controller	1
NS		AAA Alkaline batteries	4

Counterweight OPTE4293 Option



ITEM NO.	PART NUMBER	DESCRIPTION	QTY.
1	6702840	Bracket	2
2	6702838	Counterweight 9.6 kg	5
3	6702006	Bolt	1
4	9040183	Washer	2
5	9040182	Nut	1
6	6702942	Flangebolt	2
7	6702619	Flangenut	2

Stickers



PUMA 2303 380 X 155



6702882



PUMA 2303 380 X 155



6702882.1



NO.	PART NUMBER	DESCRIPTION	QTY.
1	6702882	Stickers kits Puma 2303 Right	1
2	6702882.1	Stickers kits Puma 2303 Left	1



Merkurvej 25 | DK-6000 Kolding | Tel.: +45 75 55 36 44 | info@GreenTec.eu | www.GreenTec.eu

Cutting Edge Technology